

MEETING ROOMS

SOHOWORKS



Meeting Rooms at Soho Works

Soho Works is an international network of workspaces by Soho House, designed and equipped to help creative thinkers and businesses connect, collaborate, and grow.

Our spaces combine the 'home away from home' feeling of our Houses with all the tools, technology and equipment to help you do your best work.

Each workspace offers meeting rooms, flexible private hire options and a curated programme of member events to help you and your business grow.

Open now in **180 Strand, Dean Street, White City** and **Shoreditch**

Prices are exclusive of VAT.
Non-member rates include House and Friends-only memberships.



180 Strand

180 Soho Works is based inside a Brutalist building on London's Strand, which is also home to The Store X, Dazed Media Group, IGM and The Vinyl Factory. Our 20,000 sq ft workspace is set across two floors and has a private loft space, meeting rooms, podcast recording studio, phone booths, and a fully equipped kitchen.

180 Strand, London, WC2R 1EA

For enquiries, contact reception.180@sohoworks.com



180 STRAND

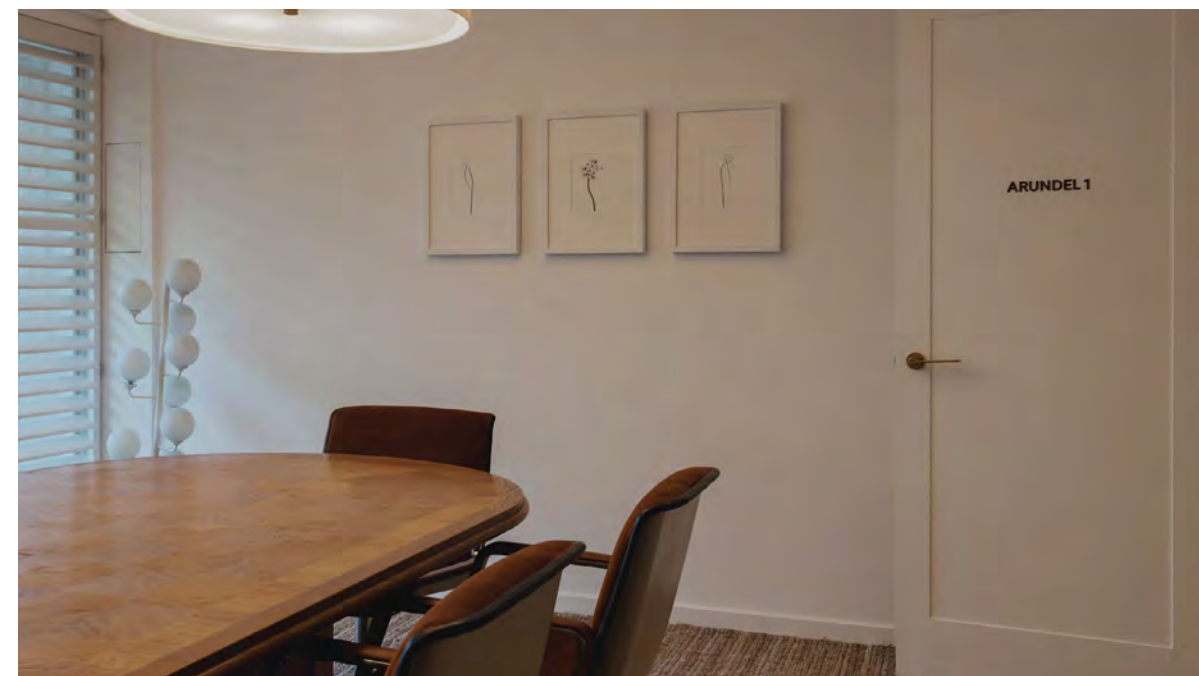


ARUNDEL 1

Boardroom style
Large screen
Wired and wireless connectivity
Video conferencing
Podcast equipment
Sound-resistant walls

Seats eight

£80 per hour (Soho Works member)



180 STRAND



ARUNDEL 2

Lounge style
Large screen
Wireless connectivity

Seats six

£80 per hour (Soho Works member)



180 STRAND

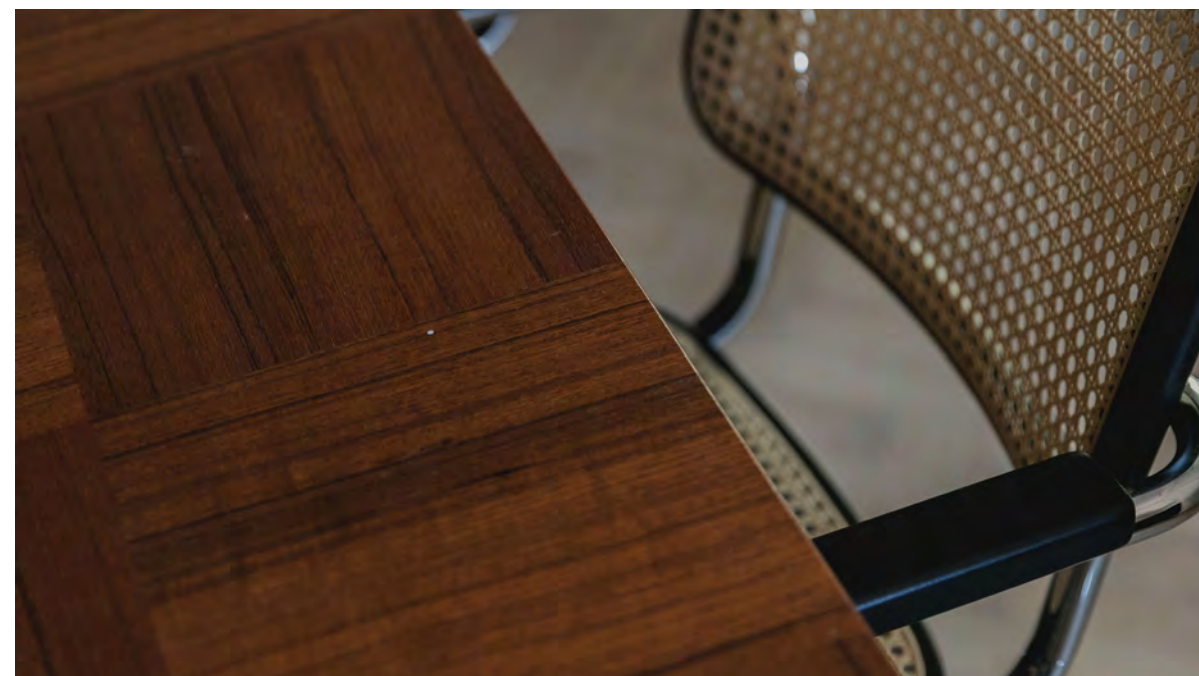


KING'S

Boardroom style
Large screen
Wired and wireless connectivity
Video conferencing
Wine fridge and sink

Seats twelve

£125 per hour (Soho Works member)



Dean Street

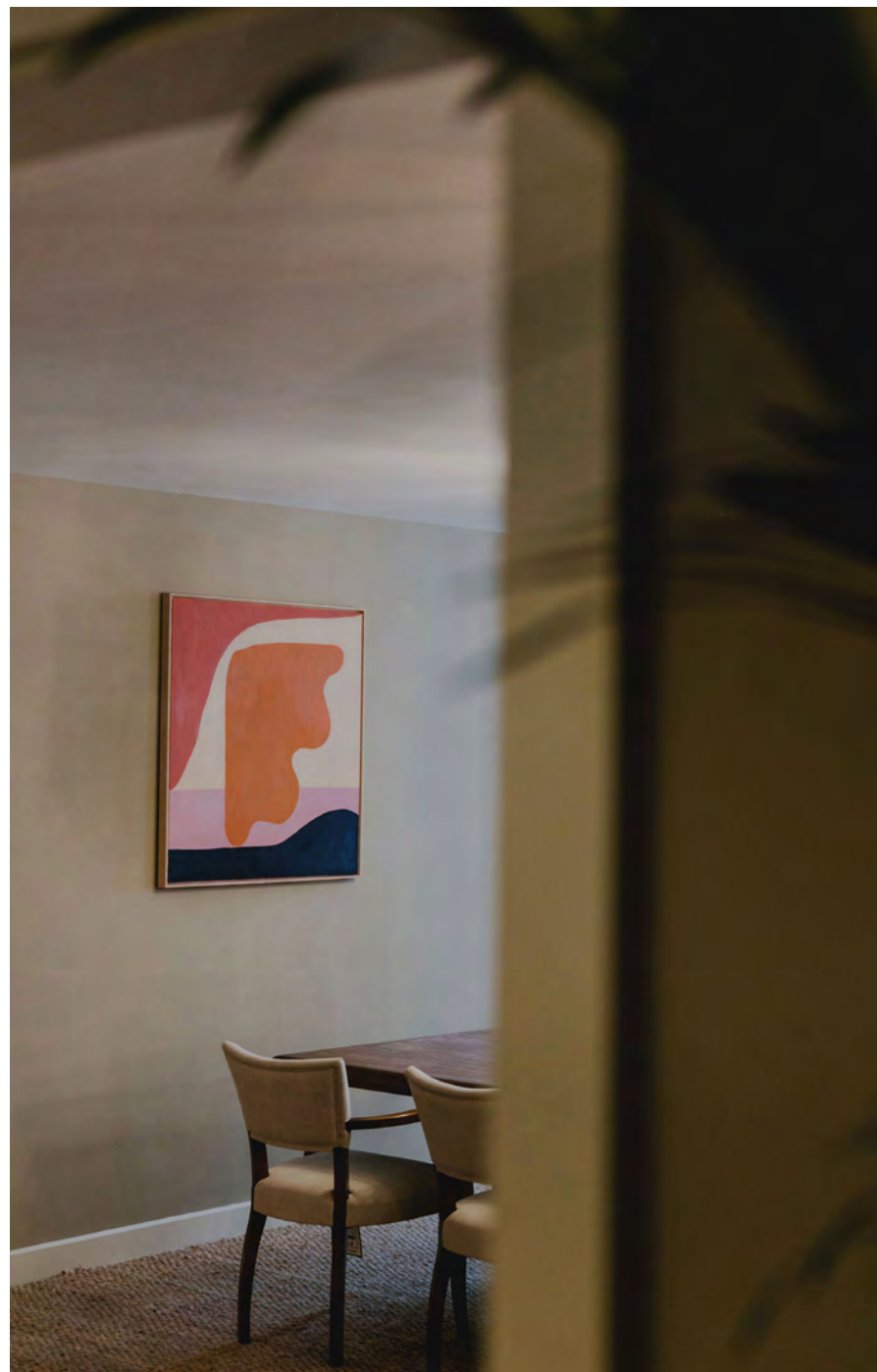
Located in the heart of Soho and two doors down from 76 Dean Street, our 24,000 sq ft workspace is set across four floors. Dean Street boasts meeting rooms, members' kitchens, a podcast room, showers, bike storage and two courtyards.

72-74 Dean Street, London, W1D 3SG

For enquiries, contact reception.deanst@sohoworks.com



DEAN STREET



SHAFTESBURY

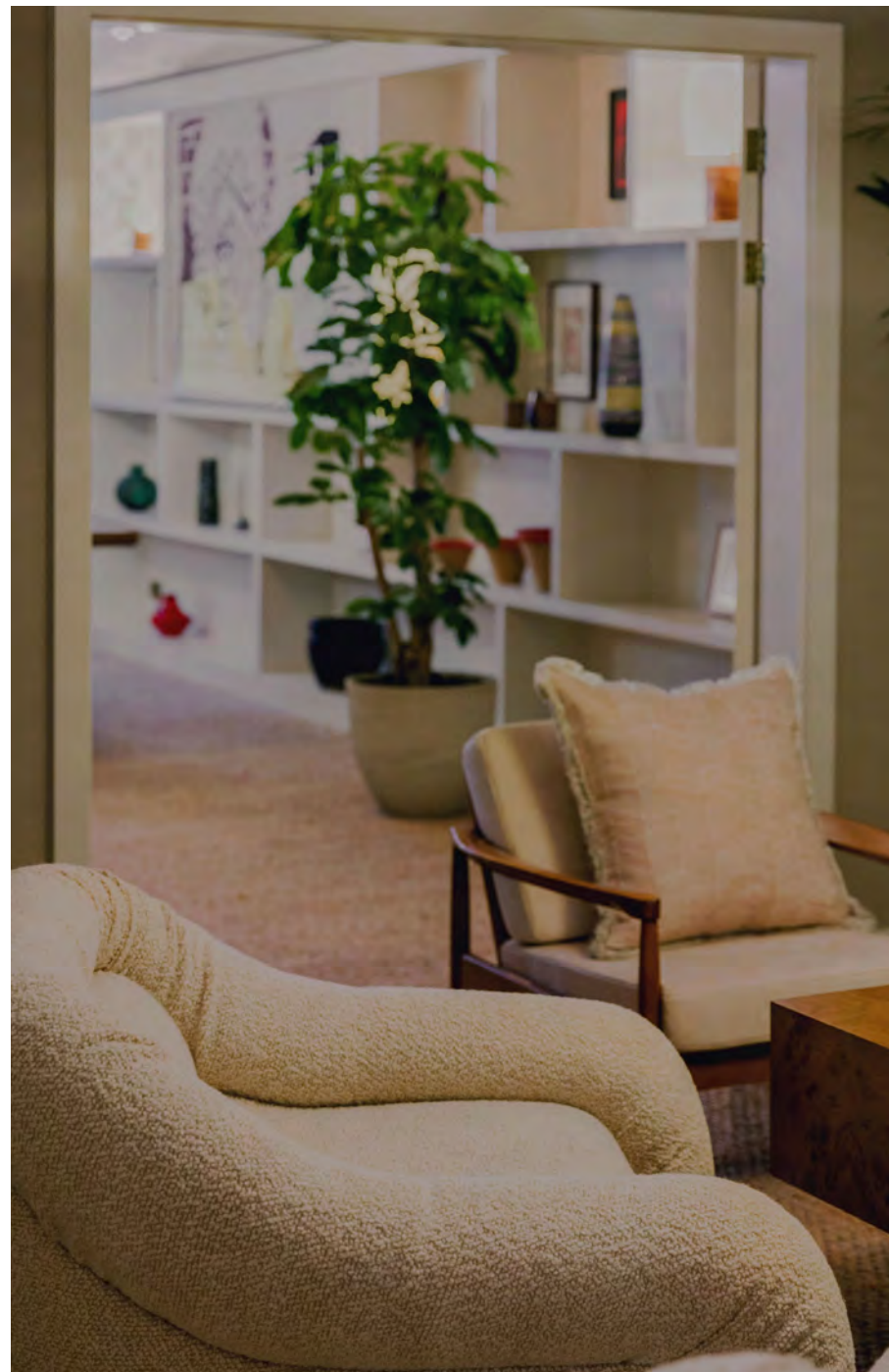
Boardroom style
55 inch screen
Wired and wireless connectivity
Temperature controlled
Can be booked with Mews 1

Seats up to twelve

£80 per hour (Soho Works member)
£125 per hour (non-member)



DEAN STREET



MEWS 1

Lounge style
Temperature controlled
Can be booked with Shaftesbury

This room does not include a screen or video
conferencing capabilities

Seats six

£50 per hour (Soho Works member)
£80 per hour (non-member)



DEAN STREET



MEWS 2

Lounge style
55 inch screen
Wired and wireless connectivity
Video conferencing capabilities
Temperature controlled

Seats eight

£80 per hour (Soho Works member)
£125 per hour (non-member)



DEAN STREET



OLD COMPTON

Discussion style
Additional lounge area
55 inch screen
Wired and wireless connectivity
Video conferencing capabilities
Temperature controlled

Seats up to fourteen

£80 per hour (Soho Works member)
£125 per hour (non-member)



DEAN STREET

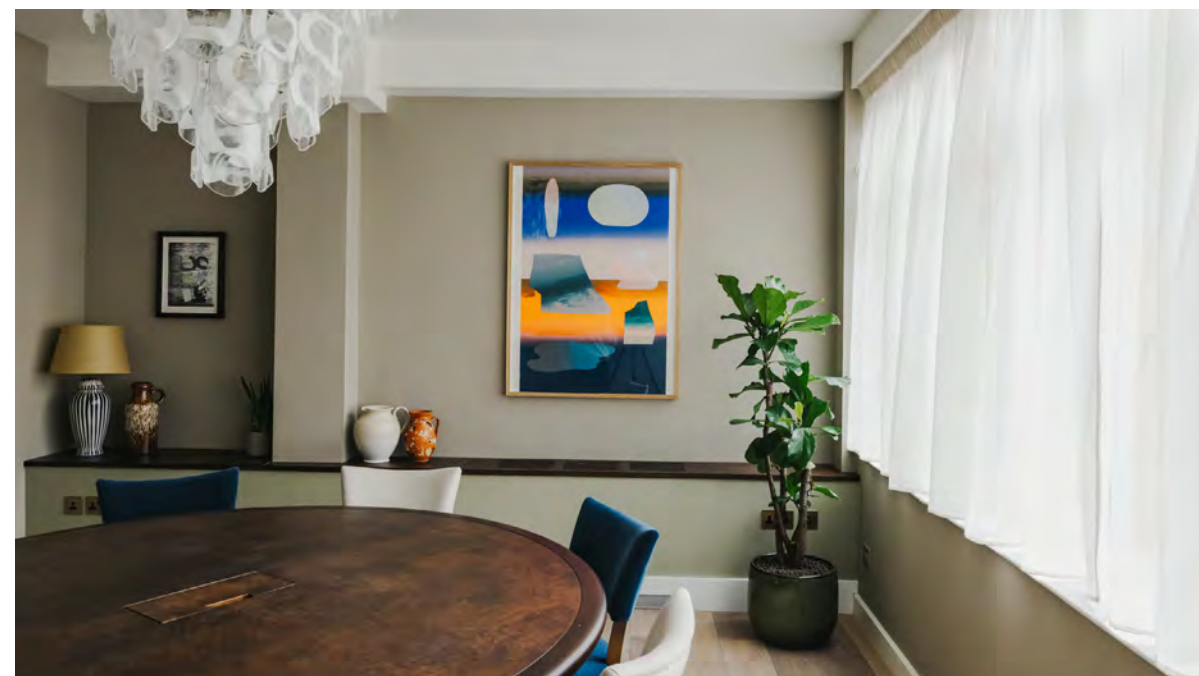


PRIDE

Discussion style
55 inch screen
Wired and wireless connectivity
Video conferencing capabilities
Temperature controlled

Seats eight

£50 per hour (Soho Works member)
£80 per hour (non-member)



DEAN STREET



WARDOUR

Lounge style
55 inch screen
Wired and wireless connectivity
Video conferencing capabilities
Temperature controlled

Seats six

£50 per hour (Soho Works member)
£80 per hour (non-member)



DEAN STREET



SOUTH ROOM

Discussion style
Additional lounge area
55 inch screen
Wired and wireless connectivity
Video conferencing capabilities
Temperature controlled

Seats up to sixteen

£80 per hour (Soho Works member)
£125 per hour (non-member)



DEAN STREET



STUDIO

Boardroom style
55 inch screen
Presentation capabilities
Wired and wireless connectivity
Temperature controlled
Sound-resistant walls
Podcast equipment

Seats eight

£80 per hour (Soho Works member)
£125 per hour (non-member)

DEAN STREET

CANVAS

A fully flexible, private hire space, perfect for panel talks, castings, workshops and studio sessions.

Bookable on a daily basis, our temperature controlled room features a large projector and has a maximum capacity of 50. We can also provide our bespoke catering menu upon request.

Enquire with reception for more information



White City

Set next to White City House, in the historical Television Centre, our 30,000 sq ft workspace has multiple meeting rooms, podcast recording equipment, phone booths, and a fully equipped kitchen.

2 Television Centre, London, W12 7FR

For enquiries, contact reception.whitecity@sohoworks.com



WHITE CITY



THE STUDY

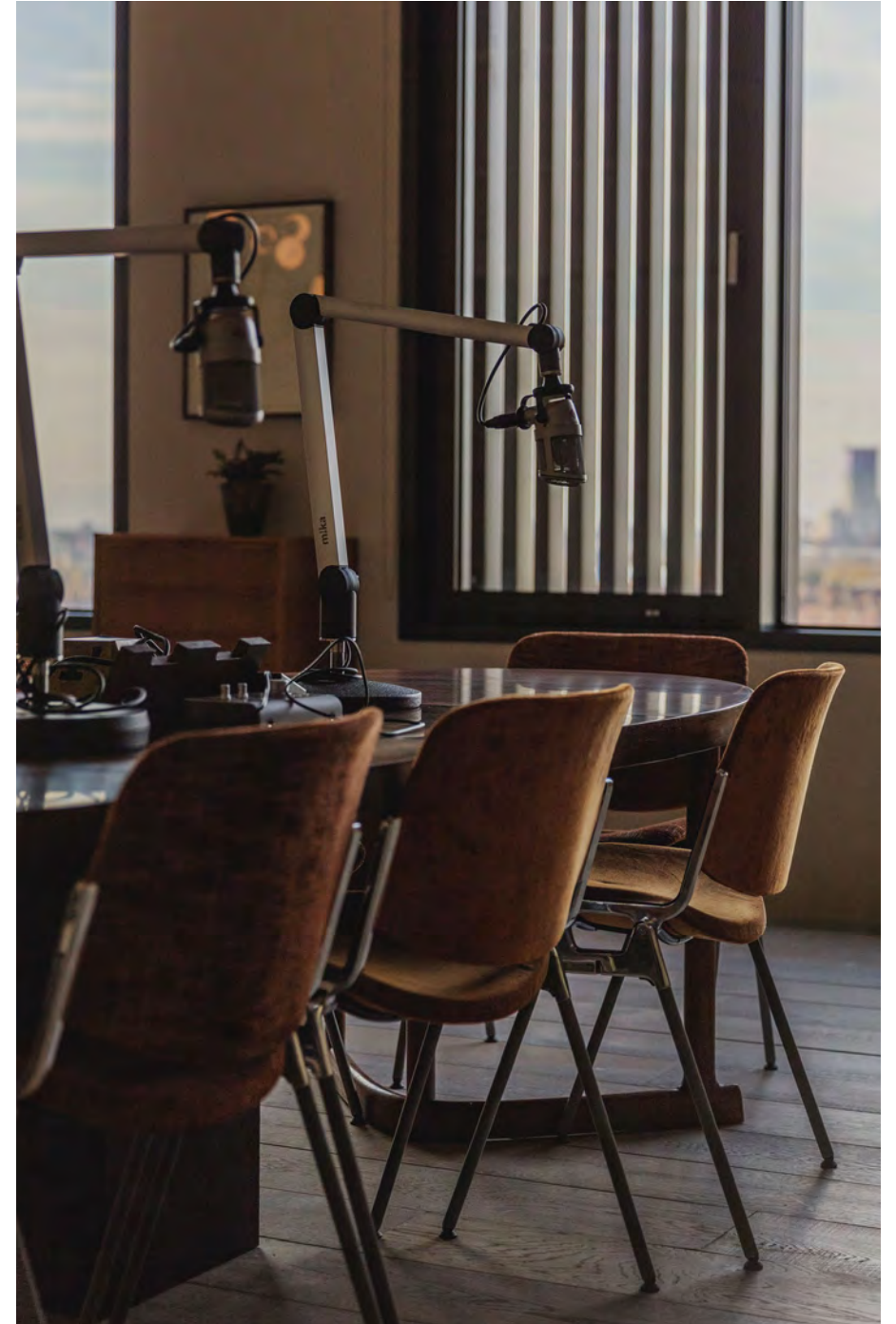
Discussion style
Additional lounge area
55 inch screen
Wired and wireless connectivity
Video conferencing capabilities

Seats six

£50 per hour (Soho Works member)
£80 per hour (non-member)



WHITE CITY

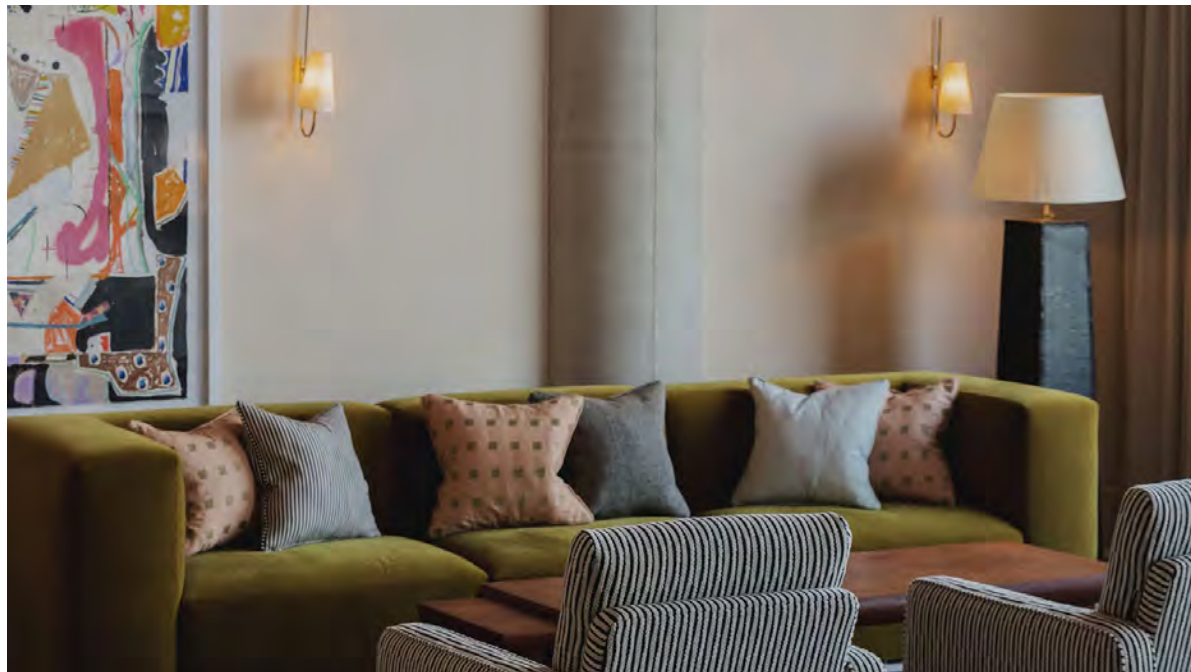


LOFTUS ROOM

Boardroom style
Additional lounge area
55 inch screen
Wired and wireless connectivity
Video conferencing capabilities

Seats up to fourteen

£80 per hour (Soho Works member)
£125 per hour (non-member)



WHITE CITY

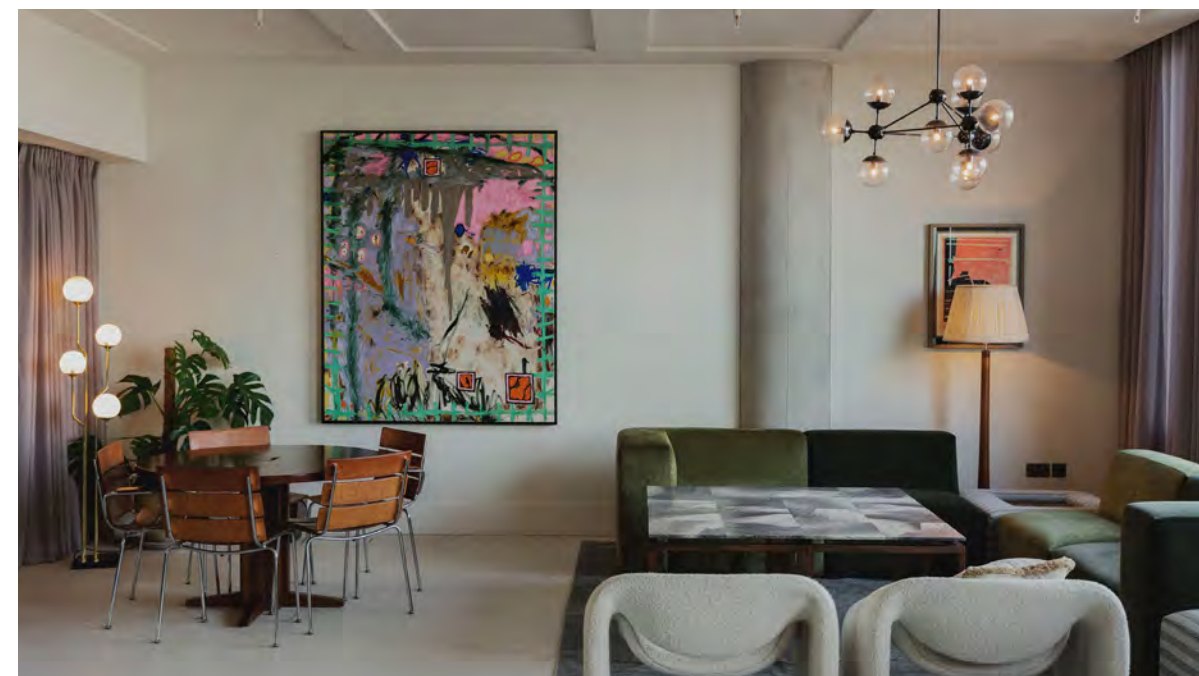


FIVE-A-SIDE

Discussion style
Additional lounge area
Two discussion tables
55 inch screen
Wired and wireless connectivity
Video conferencing capabilities

Seats up to fourteen

£80 per hour (Soho Works member)
£125 per hour (non-member)



WHITE CITY



WEST ROOM

Boardroom style
Additional lounge area
55 inch screen
Wired and wireless connectivity
Video conferencing capabilities

Seats up to twelve

£80 per hour (Soho Works member)
£125 per hour (non-member)



WHITE CITY

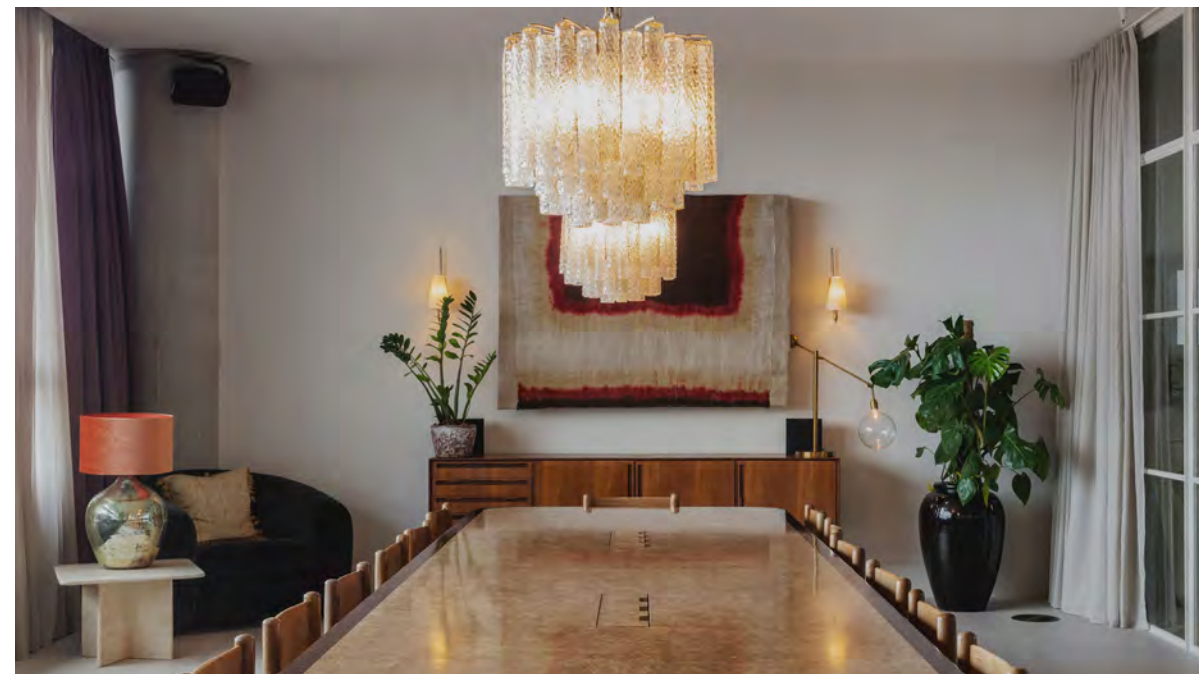


EAST ROOM

Boardroom style
55 inch screen
Wired and wireless connectivity
Video conferencing capabilities

Seats fourteen

£125 per hour (Soho Works member)
£165 per hour (non-member)



SHOREDITCH

Located in the heart of east London in the iconic Tea Building, below Shoreditch House, the original Soho Works includes an open-plan lounge, workshop, studio, phone booths, meeting rooms, and offices.

56 Shoreditch High Street, London, E1 6JJ

For enquiries, contact reception@sohoworks.com



SHOREDITCH

BRICK LANE 1

Discussion style
55 inch screen
Wired and wireless connectivity
Video conferencing capabilities
Temperature controlled

Seats four

£30 per hour (Soho Works member)
£50 per hour (non-member)



SHOREDITCH



BRICK LANE 2

Discussion style
55 inch screen
Wired and wireless connectivity
Video conferencing capabilities
Temperature controlled

Seats four

£30 per hour (Soho Works member)
£50 per hour (non-member)

SHOREDITCH



TEA ROOM

Discussion style
55 inch screen
Wired and wireless connectivity
Video conferencing capabilities
Temperature controlled

Seats four

£50 per hour (Soho Works member)
£80 per hour (non-member)

SHOREDITCH



SPITALFIELD

Boardroom style
55 inch screen
Wired and wireless connectivity
Video conferencing capabilities

Seats ten

£100 per hour (Soho Works member)
£150 per hour (non-member)

SHOREDITCH

BISCUIT ROOM

Boardroom style
55 inch screen
Wired and wireless connectivity
Video conferencing capabilities
Temperature controlled

Seats ten

£100 per hour (Soho Works member)
£150 per hour (non-member)



SHOREDITCH



THE ARCHES

Discussion style
55 inch screen
Wired and wireless connectivity
Video conferencing capabilities

Seats six

£50 per hour (Soho Works member)
£80 per hour (non-member)

SHOREDITCH



COLUMBIA

Discussion style
55 inch screen
Wired and wireless connectivity
Video conferencing capabilities

Seats four

£50 per hour (Soho Works member)
£80 per hour (non-member)

SHOREDITCH

EBOR



EBOR

Discussion style
55 inch screen
Wired and wireless connectivity
Video conferencing capabilities

Seats six

£60 per hour (Soho Works member)
£80 per hour (non-member)

SOHO WORKS

