



SOHO HOUSE

Private Hire

Event Spaces at Soho House

Whatever the event is that you have in mind, we have a range of spaces to suit, from creative workshops to intimate dinners, castings and country weddings. Some of our spaces are available for public hire, while others are for Soho House members only.

To make an enquiry, or to find out more information about any of our locations including floorplans and menus, please email wilfredo@sohohouse.com



Houses

Soho Farmhouse

Our member's club in 100 acres of Oxfordshire countryside is home to a number of private hire spaces, including the Barwell Barn which is great for drinks and a feasting space for 80 people.

Great Tew, Chipping Norton, OX7 4JS



The Farmhouse



| Room name | Dinner max capacity | Sleeps up to | Members-only booking |
|---------------|---------------------|--------------|----------------------|
| The Farmhouse | 22 | 14 | Yes |

Soho Farmhouse Barwell Barn



| Room name | Max capacity sitting | Max capacity standing | Members-only booking |
|--------------|----------------------|-----------------------|----------------------|
| Barwell Barn | 80 | 120 | Yes |

Soho Farmhouse Glass House



| Room name | Max capacity sitting | Max capacity standing | Members-only booking |
|-------------|----------------------|-----------------------|----------------------|
| Glass House | 60 | 80 | Yes |

Soho Farmhouse

Electric Barn



| Room name | Max capacity sitting | Max capacity standing | Members-only booking |
|---------------|----------------------|-----------------------|----------------------|
| Electric Barn | 55 | - | Yes |

*Subject to availability

40 Greek Street

The original Soho House at 40 Greek Street is set in five Georgian townhouses at the heart of the UK's film and media industries in London's Soho. Recently refurbished, the four-floor space has the Circle Bar, Drawing Room, House Kitchen and two rooftop terraces. The Red Dining Room at 40 Greek Street hosts up to 12 guests seated and is available to hire by Soho House members only for private dinners.

40 Greek Street, London W1D 4EB



40 Greek Street



| Room name | Max capacity sitting | Max capacity standing | Members-only booking |
|-----------------|----------------------|-----------------------|----------------------|
| Red dining room | 12 | - | Yes |

76 Dean Street

Occupying a restored Georgian townhouse, our second Soho club opened 20 years after 40 Greek Street, our first House, and includes seven bars, three club rooms, a House Kitchen, outdoor courtyard, terrace and screening room.

The Top Floor and Library Bar area at 76 Dean Street holds 40 people seated and 80 standing. The Small Sitting Room holds 14 seated. Both of these spaces are available for hire to Soho House members only. The Top Floor and Small Sitting Room are available for evening events only.

The 43-seat basement cinema which includes exclusive use of the cinema bar and lounge which holds 60 standing, is available for hire to both members and the public.

76 Dean Street, London W1D 3SZ



76 Dean Street



| Room name | Max capacity sitting | Max capacity standing | Members-only booking |
|---------------------------|----------------------|-----------------------|----------------------|
| Top floor and Library bar | 40 | 80 | Yes |
| Sitting room | 14 | - | Yes |
| Screening room | 43 | - | No |

Shoreditch House

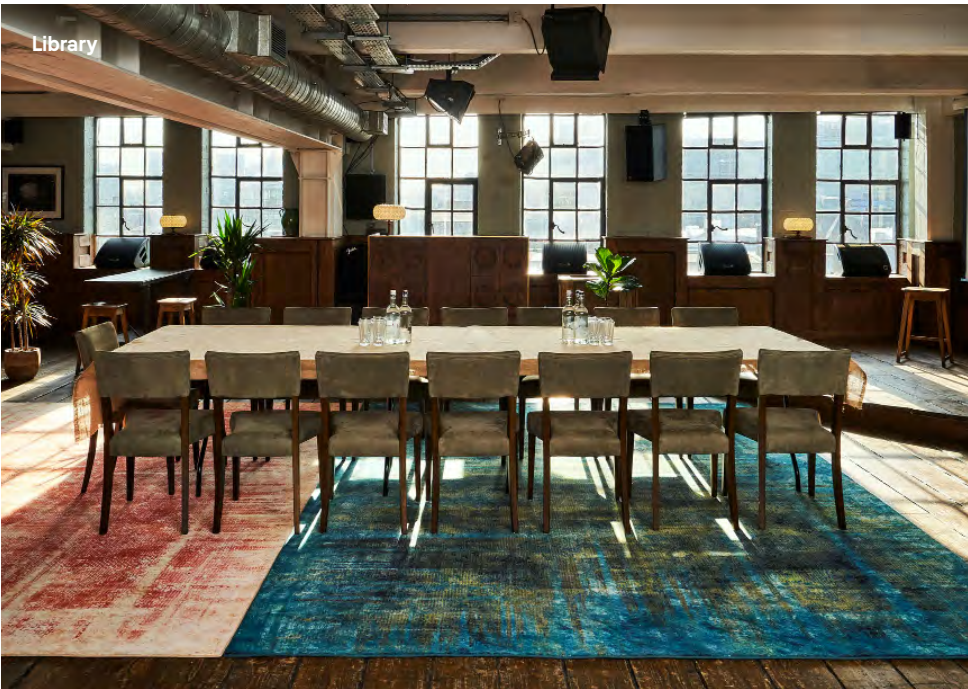
Set in a former warehouse, our east London club – known for its rooftop pool – has a House Kitchen and rooftop restaurant, a lounge, bar, gym and Cowshed spa. There are also 26 bedrooms at Shoreditch Rooms Ebor Street.

The private Library on the fifth floor holds 55 seated and 80 standing for parties, launches and other events. All of our spaces in Shoreditch House are available to hire by Soho House members only.

Ebor Street, London E1 6AW



Shoreditch House



| Room name | Max capacity sitting | Max capacity standing | Members-only booking |
|-----------|----------------------|-----------------------|----------------------|
| Library | 55 | 80 | Yes |

High Road House

Situated in west London, not far from the river and only a 20 minute drive from Heathrow, our Chiswick club opened in 2006 and features a House Kitchen, bar, lounge, flexible event spaces, a public brasserie and 14 bedrooms.

Downstairs at High Road House, event and private dining areas can be created in a variety of setups for groups ranging from 10 to 120 and are available to members and non-members. On the first floor, within the Club, our Side Room can hold up to 12 people seated. This is for member bookings only.

162-170 Chiswick Road, London W4 1PR



High Road House



| Room name | Max capacity sitting | Max capacity standing | Members-only booking |
|----------------|----------------------|-----------------------|----------------------|
| Little room | 20 | 40 | Yes |
| Big room | 50 | 60 | Yes |
| Side room | 12 | - | Yes |
| Club room 3 | 52 | 50 | Yes |
| Big and Little | 100 | 120 | Yes |

Kettner's

The design of Kettner's retains the original Grade II listed details, including floral plasterwork and mirrors that line the walls. Rosewood and mahogany furniture throughout add warmth.

The Champagne Bar features an original mosaic tiled floor and early-deco 1920s interior details. It can comfortably fit up to 50 standing and 25 seated on sofas. Available for hire to Soho House members and Soho Friends members.

29 Romilly Street, London W1D 5HP



Kettner's



| Room name | Max capacity sitting | Max capacity standing | Members-only booking |
|---------------|----------------------|-----------------------|----------------------|
| Champagne bar | 20 | 50 | Yes |

Little House Mayfair

Located on a quiet corner in London's Mayfair, Soho House's little sister is a cosy place to meet, eat and drink. For those staying in London for extended periods, there are also four long-stay apartments above the main House.

Little House is available to hire in its entirety every Sunday evening from 6pm. The ground floor space can hold up to 60 seated or 150 standing. Available to Soho House members and non-members.

2 Queen Street, London W1J 5PA



Little House Mayfair



| Room name | Max capacity sitting | Max capacity standing | Members-only booking |
|--------------|----------------------|-----------------------|----------------------|
| Entire House | 60 | 150 | No |

White City House

Our third House in west London occupies part of the former BBC Television Centre in White City and, in addition to a rooftop pool and terrace, offers three floors of club space, a 22,000sq ft gym, 45 bedrooms and public restaurant, The Allis.

Studio 8 can hold 160 people seated and 300 standing for parties and events. The Welcome Bar, on the 8th floor of White City House, can seat 24 and hold 60 standing – this area is available to hire by Soho House members only.

Inspired by the design of Soho House Chicago, White City House Studio can host 110 people seated and up to 250 people standing. It divides into two smaller studios called Studio A and Studio B for smaller parties.

Television Centre, 101 Wood Lane, London W12 7FR



White City House



| Room name | Max capacity sitting | Max capacity standing | Members-only booking |
|-------------|----------------------|-----------------------|----------------------|
| 8th Floor | 160 | 300 | Yes |
| Studio 8 | 100 | 250 | Yes |
| Welcome Bar | 24 | 60 | Yes |

Electric House

Next door to one of the oldest cinemas in London, Electric House on Notting Hill's Portobello Road offers spaces to eat, drink, work and relax. Upstairs at Electric House, The Library hosts up to 22 seated or 45 standing for private events and dinners. The Snug, just off the main club floor holds 14 people seated. Both available for hire to Soho House members only.

191 Portobello Road, London W11 2ED



Electric House



| Room name | Max capacity sitting | Max capacity standing | Members-only booking |
|-------------|----------------------|-----------------------|----------------------|
| The Library | 22 | 45 | Yes |
| The Snug | 14 | 14 | Yes |

Babington House

A home away from home, Babington House sits in 18 acres of grounds 30 minutes from Bath, Somerset. The original Cowshed spa, 33 bedrooms, two pools, a gym, tennis courts and a croquet lawn are among the features of this Georgian manor house.

Spaces to hire at Babington range from the Snug holding eight for an intimate dinner, the Study seating up to 10, to the Library seating 25. The Orangery can host up to 90 seated for wedding breakfasts and large-scale events, with the option of adding the adjacent 36-seat Log Room (which can also be hired separately). Also on offer is the 45-seat cinema for hire to Soho House members.

Babington, near Frome, Somerset BA11 3RW



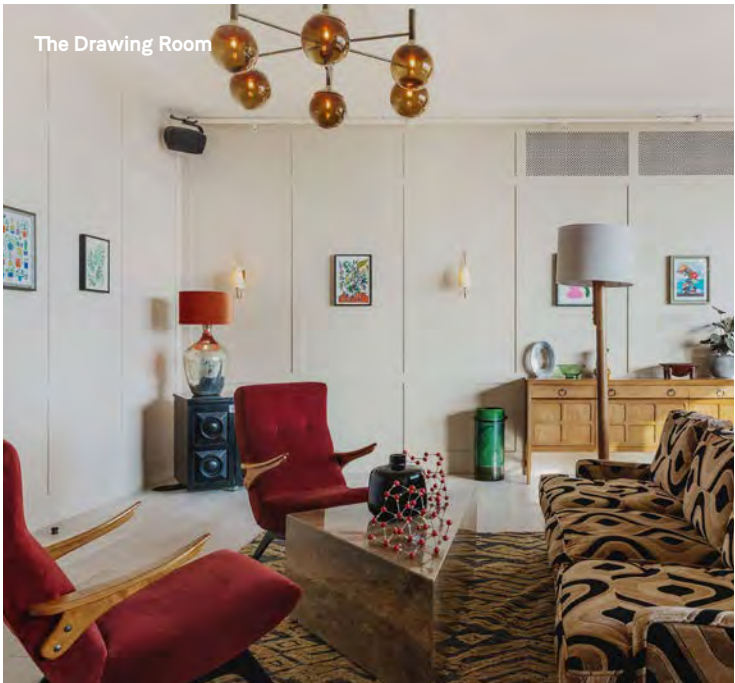
Babington House



| Room name | Max capacity sitting | Max capacity standing | Members-only booking |
|----------------|----------------------|-----------------------|----------------------|
| The Snug | 8 | 8 | Yes |
| Study | 10 | 10 | Yes |
| Library | 25 | 25 | Yes |
| The Orangery | 90 | 100+ | Yes |
| Log room | 36 | 50 | Yes |
| Screening room | 45 | - | Yes |

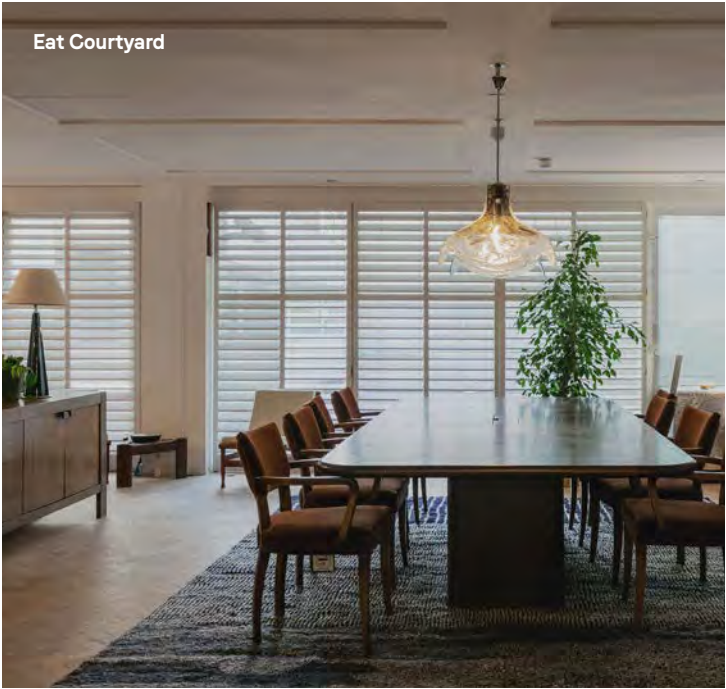
Soho Works | Lofts

White City House



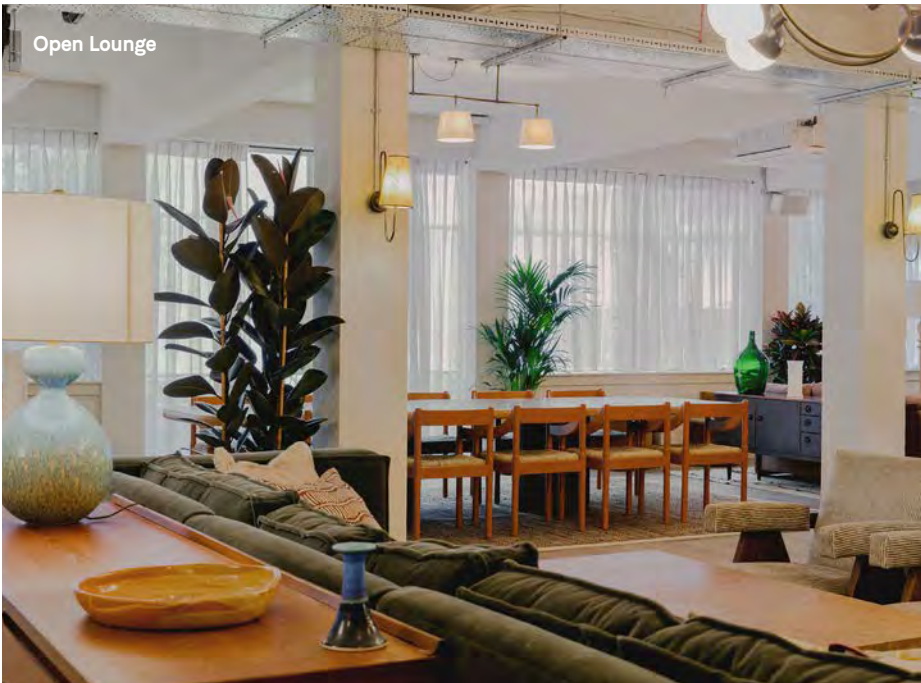
| Room name | Max capacity sitting | Max capacity standing | Members-only booking |
|------------------|----------------------|-----------------------|----------------------|
| Loft | 50 | 150 | No |
| Lounge & Kitchen | 20 | 65 | No |
| East Room | 14 | 30 | No |
| Drawing Room | 10 | 30 | No |
| Library | 10 | 25 | No |

180 House



| Room name | Max capacity sitting | Max capacity standing | Members-only booking |
|-----------------|----------------------|-----------------------|----------------------|
| Dining Room | 8 | 20 | No |
| East Apartment | 14 | 40 | No |
| Arundel 1 | 8 | 10 | No |
| Arundel 2 | 7 | 10 | No |
| East Courtyard | 22 | 60 | No |
| West Courtyard | 22 | 60 | No |
| Kings | 14 | 20 | No |
| St Clements | 10 | 35 | No |
| Sitting Room | 8 | 15 | No |
| Mackennal | 11 | 10 | No |
| West Apartments | 15 | 40 | No |
| Living Room | 10 | 20 | No |
| Kitchen | 15 | 30 | No |

Royalty House, Dean Street



| Room name | Max capacity sitting | Max capacity standing | Members-only booking |
|------------------|---------------------------|-----------------------|----------------------|
| Open Lounge | - | 60 | No |
| Mews 1 | 9 | 20 | No |
| Shaftesbury Room | 10 | 25 | No |
| Mews 2 | 6 | 10 | No |
| Canvas Room | - | 60 | No |
| Old Compton Room | 6 Round Table 8 Lounge | 25 | No |
| Studio | 8 | 10 | No |

Cinemas

Electric Cinema

The Electric Portobello is a unique space which lends itself to a range of opportunities for private hire for a maximum of 83 people. It's ideal for press launches, birthdays, screenings, presentations or conferences.

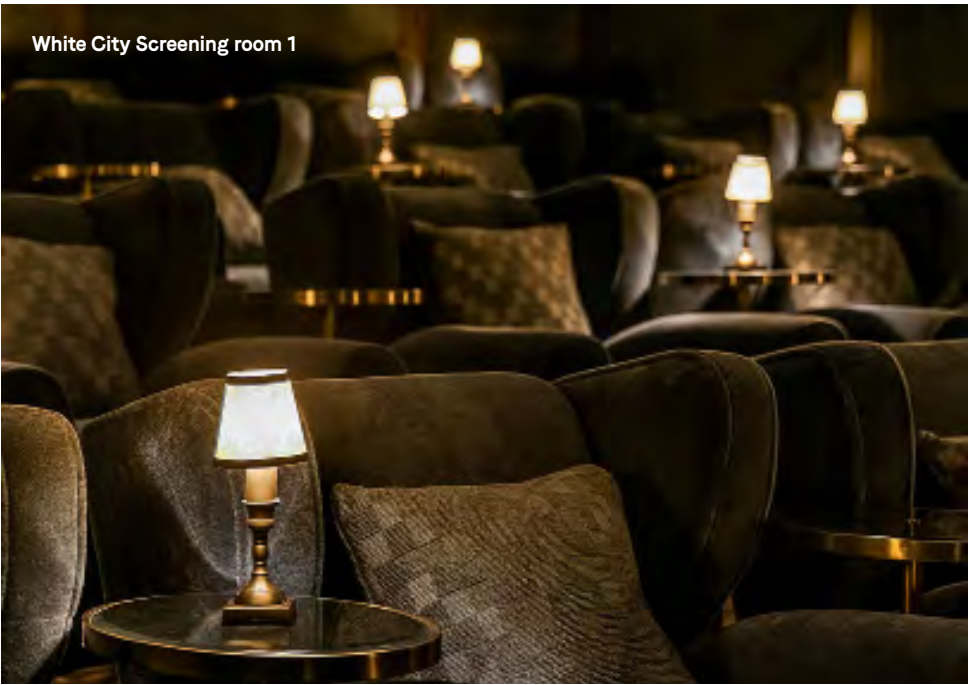
The Electric White City comprises three different screens. Screen 1 seats 51, Screen 2 seats 37, and Screen 3 seats 32.

All cinemas are available to hire by Soho House members and non-members.

Portobello, 191 Portobello Road, W11 2ED
White City, Television Centre, 101 Wood Lane, London W12 7FR



Electric Cinema



| Room name | Max capacity sitting | Max capacity standing | Members-only booking |
|-----------------------------------|----------------------|-----------------------|----------------------|
| Screening Room 83 at Portobello | - | - | No |
| Screening Room 51 1 at White City | - | - | No |
| Screening Room 37 2 at White City | - | - | No |
| Screening Room 32 3 at White City | - | - | No |

Redchurch Street Cinema

| Room name | Max capacity sitting | Max capacity standing | Members-only booking |
|------------------------------------|----------------------|-----------------------|----------------------|
| Screening room Redchurch Street | 50 | | |



Townhouses

Dean Street Townhouse

A pair of Georgian residences built by carpenter John Meard in 1732-1735. The Snug at Dean Street Townhouse is a private dining area for up to 14 people, separated from the main restaurant by thick velvet curtains. Available for hire to Soho House members and non-members.

69-71 Dean Street, London W1D 3SE



Dean Street Townhouse



| Room name | Max capacity sitting | Max capacity standing | Members-only booking |
|-----------|----------------------|-----------------------|----------------------|
| The Snug | 14 | - | No |

Restaurants

Restaurants

Our restaurants have a number of options for private hire and tables for large groups, whether you're celebrating a birthday, having a team dinner or organising a party. Feast on dishes from around the globe, including classic Italian plates at Cecconi's, traditional French cooking at Cafe Boheme and modern European fare at The Allis. At High Road Brasserie tables are available for up to 16 people in the light and airy restaurant, and at Electric Diner the maximum table size is 10.

Please note that for large tables a la carte dining may not be available and a set menu or pre-order is required.

Cecconi's Mayfair, 5A Burlington Gardens, W1S 3EP;
cecconis.co.uk

Cecconi's Shoreditch, 58-60 Redchurch Street, E2 7DP;
cecconishoreditch.com

Cecconi's Pizza Bar, 19-21 Old Compton Street, W1D 5JJ;
cecconispizzabar.com

Cafe Boheme, 13 Old Compton Street, W1D 5JQ;
cafeboheme.co.uk

The Allis, Television Centre, 101 Wood Lane, W12 7FR;
thealliswhitecity.com

Hoxton Grill, 81 Great Eastern Street, EC2A 3HU;
hoxtongrill.com

High Road Brasserie, 162-170 Chiswick High Road, W4 1PR;
highroadbrasserie.co.uk

Electric Diner, 191 Portobello Road, W11 2ED;
electricdiner.com



Restaurants



| Room name | Max table size | Members-only booking |
|----------------------|----------------|----------------------|
| Cecconi's Mayfair | 12 | No |
| Cecconi's Shoreditch | 15 | No |
| Cecconi's Pizza Bar | 16 | No |
| Cafe Boheme | 10 | No |
| The Allis | 25 | No |
| Hoxton Grill | 30 | No |
| High Road Brasserie | 16 | No |
| Electric Diner | 10 | No |

Hoxton Grill Apartment

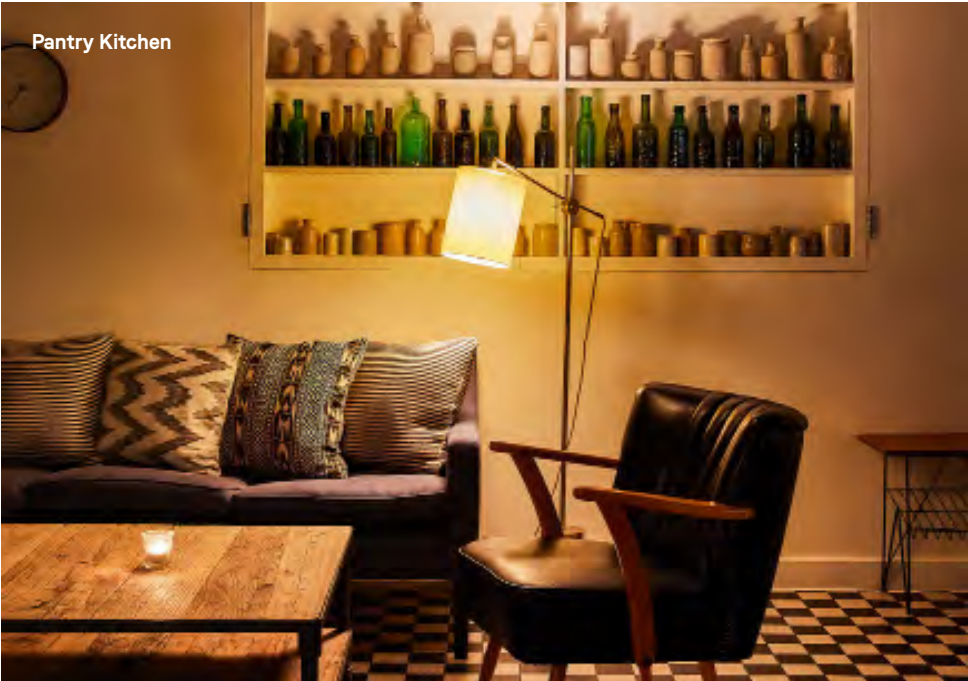
The Apartment is a new entertainment and events space in the heart of East London with the look and feel of a lived-in city flat complete with a Kitchen Pantry and fully stocked bar.

81 Great Eastern St, Hackney, London EC2A 3HU



Hoxton Grill Apartment

| Room name | Max capacity sitting | Max capacity standing | Members-only booking |
|--------------------------|-------------------------|--------------------------|-------------------------|
| Pantry | - | - | No |
| Library | 22 | 40 | No |
| Living Room | 30 | 60 | No |
| Living Room & Library | 70 | 100 | No |
| Dining Room | 18 | 25 | No |
| Study | 16 | 20 | No |
| Play Room | 12 | - | No |
| Den | 12 | 12 | No |
| Exclusive Apartment | - | 250 | No |



For more information please contact
Wilfred.opstal@sohohouse.com