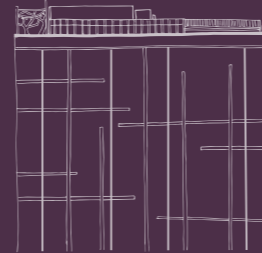




SOHO HOUSE

# Private House

PARTIES & EVENTS AT SOHO HOUSE  
2019



---

# Event Spaces at Soho House

---

Whatever the event is that you have in mind, we have a range of spaces to suit, from creative workshops to intimate dinners, castings and country weddings. Some of our spaces are available for public hire, while others are for Soho House members only.

To make an enquiry, or to find out more information about any of our locations including floorplans and menus, please email [wilfredo@sohohouse.com](mailto:wilfredo@sohohouse.com)

---

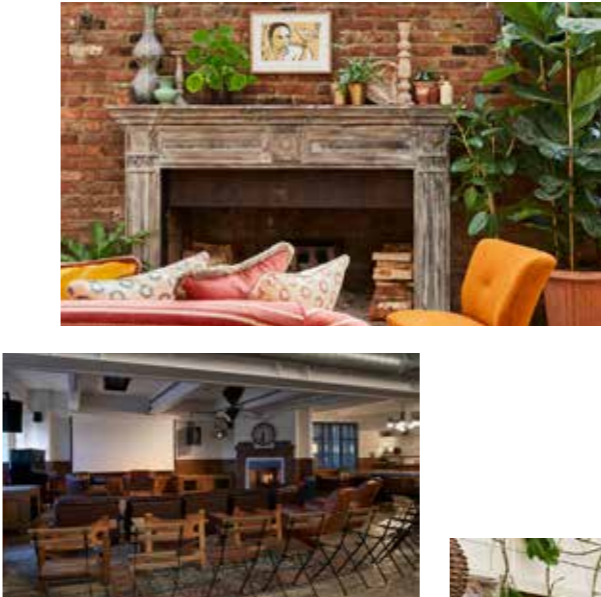
Houses

# Shoreditch House

Ebor Street, London E1 6AW; [shoreditchhouse.com](http://shoreditchhouse.com)

Set in a former warehouse, our east London club – known for its rooftop pool – has a House Kitchen and rooftop restaurant, a lounge, bar, gym and Cowshed spa. There are also 26 bedrooms at Shoreditch Rooms Ebor Street.

The private Library on the fifth floor holds 55 seated and 80 standing for parties, launches and other events. The 6th-floor rooftop Secret Garden is available for exclusive hire from October to March for 70 seated and 150 standing. From May to September, a semi-private area in the garden is available for a maximum of 30 for dinner. All of our spaces in Shoreditch House are available to hire by Soho House members only.



Clockwise from far left: the rooftop pool; the library and Maya



ROOM NAME	MAX. CAPACITY SITTING	MAX. CAPACITY STANDING	MEMBERS-ONLY BOOKING
SECRET GARDEN	70	150	YES
LIBRARY	55	80	YES

# Soho House 76 Dean Street

76 Dean Street, London W1D 3SZ; [sobohousedeanstreet.com](http://sobohousedeanstreet.com)

Occupying a restored Georgian townhouse, our second Soho club opened 20 years after 40 Greek Street, our first House, and includes seven bars, three club rooms, a House Kitchen, outdoor courtyard, terrace and screening room.

The Top Floor and Library Bar area at 76 Dean Street holds 40 people seated and 80 standing. The Small Sitting Room holds 12 seated. Both of these spaces are available for hire to Soho House members only. The Top Floor and Small Sitting Room are available for evening events only.

The 43-seat basement cinema which includes exclusive use of the cinema bar and lounge which holds 60 standing, is available for hire to both members and the public.



Left to right: the restaurant; the top floor and library bar; the small sitting room; screening room



ROOM NAME	MAX. CAPACITY SITTING	MAX. CAPACITY STANDING	MEMBERS-ONLY BOOKING
TOP FLOOR & LIBRARY BAR	40	80	YES
SMALL SITTING ROOM	12	12	YES
SCREENING ROOM, BAR & LOUNGE	43 CINEMA SEATS	-	NO



# Kettner's

29 Romilly Street, London W1D 5HP; [kettners.com](http://kettners.com)

The design of Kettner's retains the original Grade II listed details, including floral plasterwork and mirrors that line the walls. Rosewood and mahogany furniture throughout add warmth.

The Champagne Bar features an original mosaic tiled floor and early-deco 1920s interior details. It can comfortably fit up to 50 standing and 25 seated on sofas. Available for hire to Soho House members and non-members.



Clockwise from far left: the Champagne Bar, exterior of the Kettners



ROOM NAME	MAX. CAPACITY SITTING	MAX. CAPACITY STANDING	MEMBERS-ONLY BOOKING
THE CHAMPAGNE BAR	20	50	YES

# Soho House 40 Greek Street

40 Greek Street, London W1D 4EB; [sohohousegreekstreet.com](http://sohohousegreekstreet.com)

The original Soho House at 40 Greek Street is set in five Georgian townhouses at the heart of the UK’s film and media industries in London’s Soho. Recently refurbished, the four-floor space has the Circle Bar, Drawing Room, House Kitchen and two rooftop terraces.

The Red Dining Room at 40 Greek Street hosts up to 12 guests seated and is available to hire by Soho House members only for private dinners.



Clockwise from far left: *The Circle Bar*, *Yellow Dining Room*, *Courtyard*, *Red Dining Room*



ROOM NAME	MAX. CAPACITY SITTING	MAX. CAPACITY STANDING	MEMBERS-ONLY BOOKING
RED DINING ROOM	12	-	YES

# High Road House

162-170 Chiswick Road, London W4 1PR; [highroadhouse.co.uk](http://highroadhouse.co.uk)

Situated in west London, not far from the river and only a 20-minute drive from Heathrow, our Chiswick club opened in 2006 and features a House Kitchen, bar, lounge, flexible event spaces, a public brasserie and 14 bedrooms.

Downstairs at High Road House, event and private dining areas can be created in a variety of setups for groups ranging from 10 to 120 and are available to members and non-members. On the first floor, within the Club, our Side Room can hold up to 12 people seated. This is for member bookings only.



ROOM NAME	MAX. CAPACITY SITTING	MAX. CAPACITY STANDING	MEMBERS-ONLY BOOKING
LITTLE ROOM	20	40	NO
MIDDLE ROOM	10	30	NO
BIG ROOM	50	60	NO
SIDE ROOM	12	-	YES
CLUB ROOM 3	30	50	YES
BIG AND LITTLE ROOM COMBINED	-	120	NO

Left to right: the exterior of High Road House; the little room; the middle room bar; one of the House's bedrooms; the big room; the big room seating area; one of the Club's dining rooms



# Little House Mayfair

2 Queen Street, London W1J 5PA; [littlehousemayfair.com](http://littlehousemayfair.com)

Located on a quiet corner in London’s Mayfair, Soho House’s little sister is a cosy place to meet, eat and drink. For those staying in London for extended periods, there are also four long-stay apartments above the main House.

Little House is available to hire in its entirety every Sunday evening from 6pm. The ground floor space can hold up to 60 seated or 150 standing. Available to Soho House members and non-members.



Clockwise from far left: the exterior of the House, club space

ROOM NAME	MAX. CAPACITY SITTING	MAX. CAPACITY STANDING	MEMBERS-ONLY BOOKING
ENTIRE HOUSE	60	150	NO

# White City House

Television Centre, 101 Wood Lane, London W12 7FR; [whitecityhouse.com](http://whitecityhouse.com)

Our third House in west London occupies part of the former BBC Television Centre in White City and, in addition to a rooftop pool and terrace, offers three floors of club space, a 22,000sq ft gym, 45 bedrooms and public restaurant, The Allis.

Studio 8 can hold 160 people seated and 300 standing for parties and events. The Welcome Bar, on the 8th floor of White City House, can seat 24 and hold 60 standing – this area is available to hire by Soho House members only.

Inspired by the design of Soho House Chicago, White City House Studio can host 110 people seated and up to 250 people standing. It divides into two smaller studios called Studio A and Studio B for smaller parties.



ROOM NAME	MAX. CAPACITY SITTING	MAX. CAPACITY STANDING	MEMBERS-ONLY BOOKING
STUDIO 8	160	300	YES
THE WELCOME BAR	24	60	YES
WHITE CITY HOUSE STUDIO (STUDIO A & B COMBINED)	110	250	NO
STUDIO A AT WHITE CITY HOUSE STUDIO	80	200	NO
STUDIO B AT WHITE CITY HOUSE STUDIO	30	50	NO

Left to right: the rooftop pool, Studio 8, club space

# Electric House

191 Portobello Road, London W11 2ED; [electrichouse.com](http://electrichouse.com)

Next door to one of the oldest cinemas in London, Electric House on Notting Hill's Portobello Road offers spaces to eat, drink, work and relax.

Upstairs at Electric House, The Library hosts up to 22 seated or 45 standing for private events and dinners. The Snug, just off the main club floor holds 14 people seated. Both available for hire to Soho House members only.



Clockwise from far left: *the Library*, *Club space*, *Snug*

ROOM NAME	MAX. CAPACITY SITTING	MAX. CAPACITY STANDING	MEMBERS-ONLY BOOKING
THE LIBRARY	22	45	YES
THE SNUG	14	14	YES

# Soho Farmhouse

Great Tew, Chipping Norton, OX7 4JS; [sobofarmhouse.com](http://sobofarmhouse.com)

Our member’s club in 100 acres of Oxfordshire countryside is home to a number of private hire spaces, including the Farmyard Deli which seats 24 for dinner and the Barwell Barn which is great for drinks and a feasting space for 80 people.

Soho Farmhouse also features the Boathouse with an indoor-outdoor pool, Main Barn, Pen Yen restaurant, Electric Barn cinema and The Store. There is also a Cowshed spa, gym, stables and tennis courts.



Clockwise from far left: Hay Barn, Boathouse exterior, Deli, Barwell Barn



ROOM NAME	MAX. CAPACITY SITTING	MAX. CAPACITY STANDING	MEMBERS-ONLY BOOKING
FARMYARD DELI (EVENINGS ONLY)	24	-	YES
BARWELL BARN	80	150	YES
MARQUEE GREEN (THURS ONLY)	250	-	YES

# Babington House

Babington, near Frome, Somerset BA11 3RW; babingtonhouse.com

A home away from home, Babington House sits in 18 acres of grounds 30 minutes from Bath, Somerset. The original Cowshed spa, 33 bedrooms, two pools, a gym, tennis courts and a croquet lawn are among the features of this Georgian manor house.

Spaces to hire at Babington range from the Games Room holding eight for an intimate dinner, the Study seating up to 10, to the Library seating 25. The Orangery can host up to 90 seated for wedding breakfasts and large-scale events, with the option of adding the adjacent 36-seat Log Room (which can also be hired separately). Also on offer is the 45-seat cinema for hire to Soho House members.



Clockwise from far left: exterior of the House, bedroom, Log Room, Orangery

ROOM NAME	MAX. CAPACITY SITTING	MAX. CAPACITY STANDING	MEMBERS-ONLY BOOKING
GAMES ROOM	8	8	YES
STUDY	10	10	YES
LIBRARY	25	25	YES
THE ORANGERY	90	100+	YES
LOG ROOM	36	50	YES
SCREENING ROOM	45-SEAT	-	YES

# Electric Cinema

# Electric Cinema

*Electric Portobello, 191 Portobello Road, W11 2ED; [electriccinema.co.uk/portobello](http://electriccinema.co.uk/portobello)  
Electric Shoreditch, 64-66 Redchurch St, E2 7DP; [electriccinema.co.uk/shoreditch](http://electriccinema.co.uk/shoreditch)*

The **Electric Portobello** is a unique space which lends itself to a range of opportunities for private hire for a maximum of 83 people. It's ideal for press launches, birthdays, screenings, presentations or conferences.

The **Electric Shoreditch** holds a maximum of 50 people seated. It's available to hire from Monday-Friday until 5.30pm each day.

Opening in early 2019, the **Electric White City** comprises three different screens. Screen 1 seats 51, Screen 2 seats 37, and Screen 3 seats 32.

All cinemas are available to hire by Soho House members and non-members.



Clockwise from far left: Screening room *Electric Shoreditch*, *Electric Portobello* and *Electric White City*



ROOM NAME	MAX. CAPACITY SITTING	MAX. CAPACITY STANDING	MEMBERS-ONLY BOOKING
SCREENING ROOM AT ELECTRIC PORTOBELLO	83	-	NO
SCREENING ROOM AT ELECTRIC SHOREDITCH	50	-	NO
SCREENING ROOM 1 AT ELECTRIC WHITE CITY	51	-	NO
SCREENING ROOM 2 AT ELECTRIC WHITE CITY	37	-	NO
SCREENING ROOM 3 AT ELECTRIC WHITE CITY	32	-	NO

Weddings

# Babington House

Babington, near Frome, Somerset BA11 3RW; babingtonhouse.com

Plan your perfect wedding with our team at Babington House, a Georgian manor set in 18 acres of British countryside. It has 33 bedrooms sleeping 84 guests, a Cowshed spa, indoor-outdoor pool, tennis courts, walled garden and a cricket pitch.

We can host weddings for up to 120 people. On the day you will have the run of the House, a champagne reception and bites, a wedding breakfast for 90 people in the Orangery and space for a further 30 in our Log Room. Flower arrangements, your wedding cake, DJ, midnight snacks and a full English breakfast the next morning are all organised by us. Wedding ceremonies can be held in St. Margaret’s Church, or civil ceremonies and non-religious weddings in the Orangery or Library.



Clockwise from far left: the Chapel and exterior of the House, the Orangery, bedroom

ROOM NAME	MAX. CAPACITY SITTING	MAX. CAPACITY STANDING	MEMBERS-ONLY BOOKING
GAMES ROOM	8	8	NO
STUDY	10	10	NO
LIBRARY	25	25	NO
THE ORANGERY	90	100+	NO
LOG ROOM	36	50	NO
SCREENING ROOM	45-SEAT	-	NO

Townhouses

# Kettner's

29 Romilly Street, London W1D 5HP; kettners.com

The design of Kettner retains the original Grade II listed details, including floral plasterwork and mirrors that line the walls.

The Champagne Bar features an original mosaic tiled floor and early-deco 1920s interior details. It can comfortably fit up to 50 standing and 25 seated on sofas. Available for hire to Soho House members and non-members.



Clockwise from far left: the Champagne Bar, exterior of the Townhouse



ROOM NAME	MAX. CAPACITY SITTING	MAX. CAPACITY STANDING	MEMBERS-ONLY BOOKING
THE CHAMPAGNE BAR	20	50	NO

# Dean Street Townhouse

69-71 Dean Street, London W1D 3SE; deanstreettownhouse.com

A pair of Georgian residences built by carpenter John Meard in 1732-1735. The Snug at Dean Street Townhouse is a private dining area for up to 14 people, separated from the main restaurant by thick velvet curtains. Available for hire to Soho House members and non-members.



Clockwise from far left: *The Snug*, exterior of the restaurant



ROOM NAME	MAX. CAPACITY SITTING	MAX. CAPACITY STANDING	MEMBERS-ONLY BOOKING
THE SNUG	14	-	NO

Restaurants

# Restaurants

*Cecconi's Mayfair, 5A Burlington Gardens, W1S 3EP; cecconis.co.uk*  
*Cecconi's Shoreditch, 58-60 Redchurch Street, E2 7DP; cecconishoreditch.com*  
*Cecconi's Pizza Bar, 19-21 Old Compton Street, W1D 5JJ; cecconispizzabar.com*  
*Cafe Boheme, 13 Old Compton Street, W1D 5JQ; cafeboheme.co.uk*  
*The Allis, Television Centre, 101 Wood Lane, W12 7FR; thealliswhitecity.com*  
*Hoxton Grill, 81 Great Eastern Street, EC2A 3HU; hoxtongrill.com*  
*High Road Brasserie, 162-170 Chiswick High Road, W4 1PR; highroadbrasserie.co.uk*  
*Electric Diner, 191 Portobello Road, W11 2ED; electricdiner.com*

Our restaurants have a number of options for private hire and tables for large groups, whether you're celebrating a birthday, having a team dinner or organising a party. Feast on dishes from around the globe, including classic Italian plates at **Cecconi's**, traditional French cooking at **Cafe Boheme** and modern European fare at **The Allis**.

At **High Road Brasserie** tables are available for up to 16 people in the light and airy restaurant, and at **Electric Diner** the maximum table size is 10.

Please note that for large tables a la carte dining may not be available and a set menu or pre-order is required.



Clockwise from far left: *The Allis White City*; *Cecconi's Pizza Bar*; *Electric Diner*; *Cafe Boheme*



Tables available for large groups

ROOM NAME	MAX. TABLE SIZE	MEMBERS-ONLY BOOKING
CECCONI'S MAYFAIR	12	NO
CECCONI'S SHOREDITCH	15	NO
CECCONI'S PIZZA BAR	16	NO
CAFE BOHEME	10	NO
THE ALLIS	25	NO
HOXTON GRILL	30	NO
HIGH ROAD BRASSERIE	16	NO
ELECTRIC DINER	10	NO

# Restaurants

*The Apartment, Hoxton Grill, 81 Great Eastern Street, EC2A 3HU; [www.hoxtongrill.com/private-hire](http://www.hoxtongrill.com/private-hire)*

Reminiscent of a Manhattan loft, The Apartment at **Hoxton Grill** comprises a Library, Living Room and Study, as well as a Dining Room and Playroom. These modern spaces are available to hire individually or in combination for up to 250 guests from 6.30pm-1.30am, making it a versatile option for any event you have in mind. The Den (separate to The Apartment) can host 12 guests for dinner or to play ping pong with drinks



Clockwise from far left: *Hoxton Grill Apartment and Conservatory*



## Private Hire Spaces

ROOM NAME	MAX. CAPACITY SITTING	MAX. CAPACITY STANDING	MEMBERS-ONLY BOOKING
THE APARTMENT AT HOXTON GRILL	116	250	NO
THE STUDY AT HOXTON GRILL	16	25	NO
THE PLAYROOM AT HOXTON GRILL	12	-	NO
THE DINING ROOM AT HOXTON GRILL	18	30	NO
THE LIVING ROOM AT HOXTON GRILL	28	60	NO
THE LIBRARY AT HOXTON GRILL	22	40	NO
THE DEN AT HOXTON GRILL	12	-	NO
THE CONSERVATORY AT HOXTON GRILL	50	100	NO

*For more information please contact*  
*[wilfredo@sohohouse.com](mailto:wilfredo@sohohouse.com)*



SOHO HOUSE