

# OFFICE MEMBERSHIP

Enquiries  
[offices.uk@sohoworks.com](mailto:offices.uk@sohoworks.com)

SOHO WORKS



Coming soon...

#### LEVEL 1 AND LEVEL 4 OFFICE EXPANSION

The first floor will include a state of the art recording studio, meeting rooms and phone booths and private lockable office spaces for smaller sized teams.

The fourth floor boasts an expansive 32 desk private office, member only meeting rooms, additional phone booths and cozy lounge areas.

Office members gain meeting room credits to utilise in Dean Street's new meeting rooms, as well as across the network.

72-74 Dean Street, London, W1D 3SG

To find out more about Dean Street Soho Works, [click here](#)



Office one, fourth floor

# Dean Street

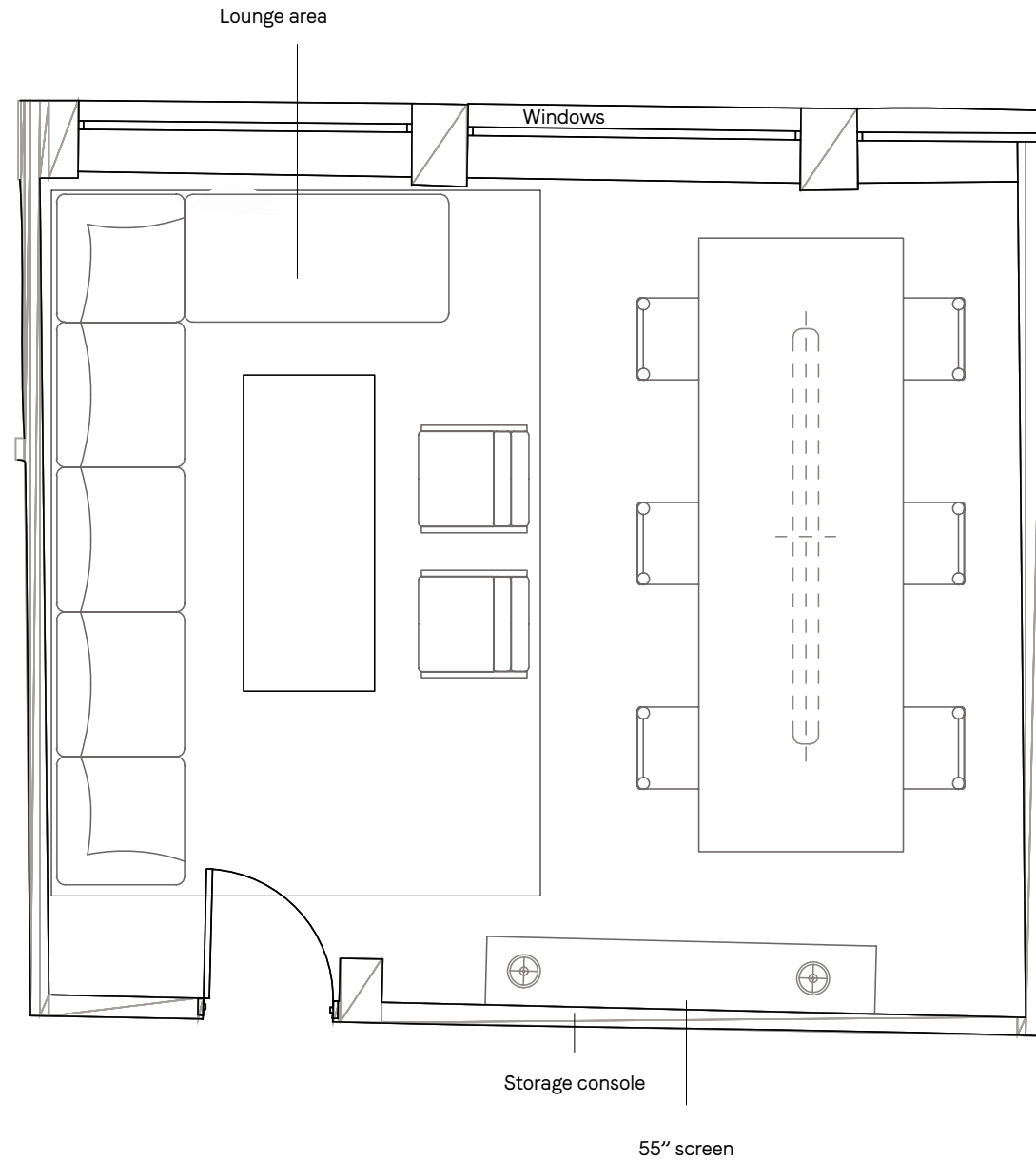


Located in the heart of Soho and two doors down from 76 Dean Street, our 24,000 sq ft workspace is set across four floors. Dean Street boasts meeting rooms, members' kitchens, a podcast room, shower room, bike storage and two courtyards.

72-74 Dean Street, London, W1D 3SG

To find out more about Dean Street Soho Works, click [here](#)

DEAN STREET



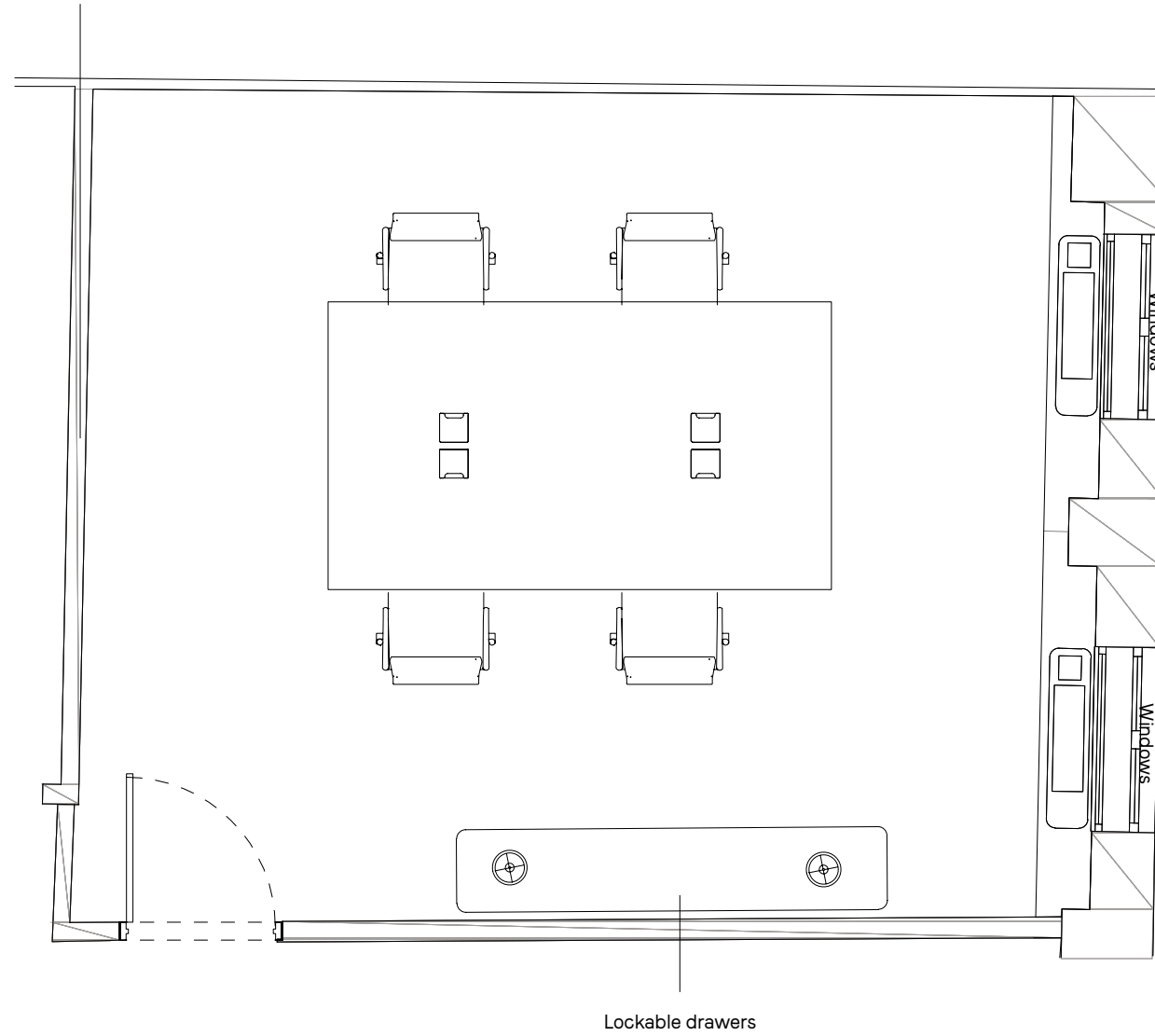
**OFFICE ONE** GROUND FLOOR

- Additional lounge area
- Natural light
- Large screen, with connectivity
- Custom-built wooden desks
- Humanscale ergonomic chairs

Seats 32  
311 sq ft

DEAN STREET

55" screen with  
computer and Videobar



**OFFICE TWO** SECOND FLOOR

- Natural light
- Lockable storage drawers
- Large screen, powered by PC
- Bose Videobar 1
- Custom-built wooden desks
- Humanscale ergonomic chairs

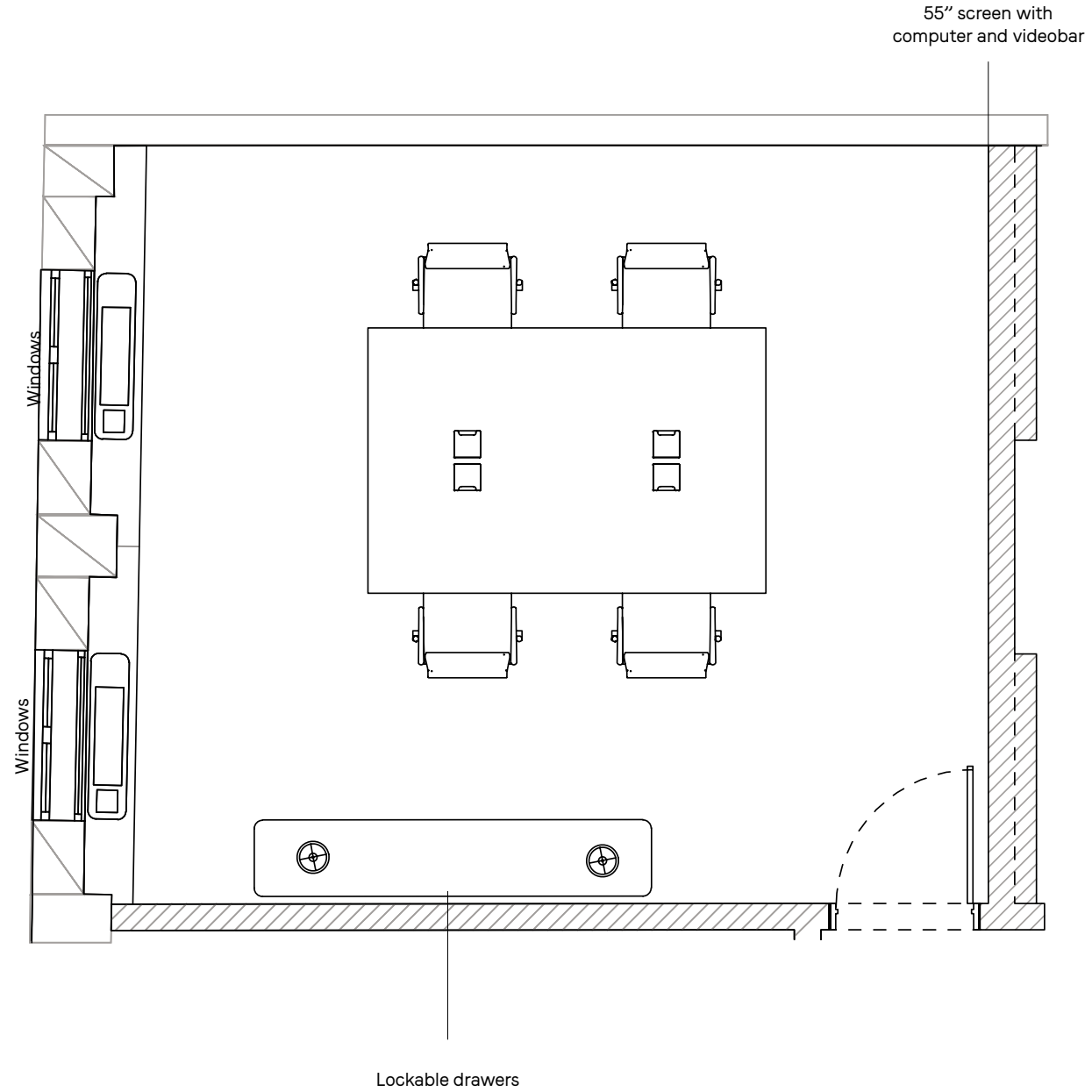
Seats 4  
285 sq ft

DEAN STREET

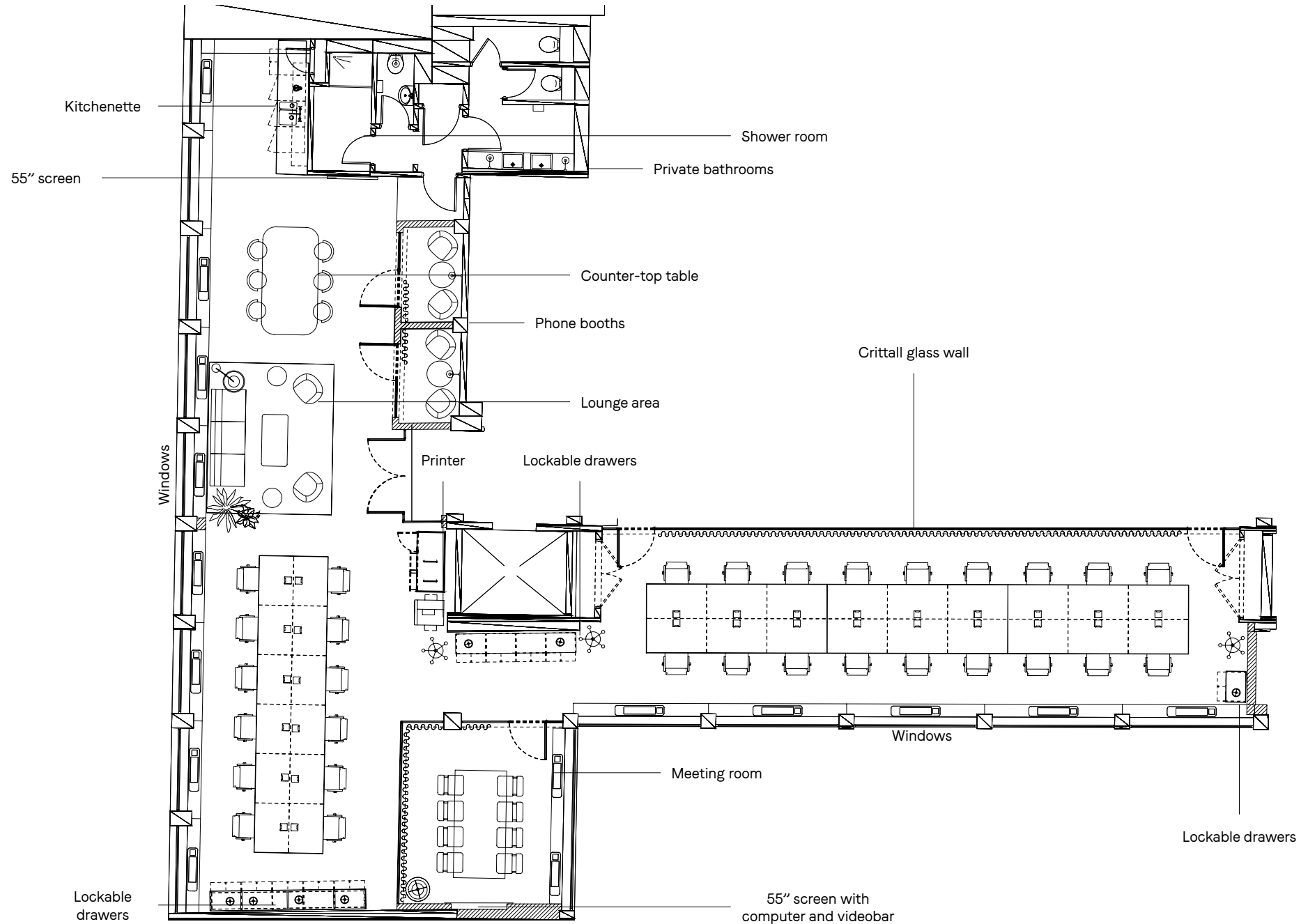
OFFICE THREE SECOND FLOOR

- Natural light
- Lockable storage drawers
- Large screen, powered by PC
- Bose Videobar 1
- Custom-built wooden desks
- Humanscale ergonomic chairs

Seats 4  
279 sq ft



DEAN STREET

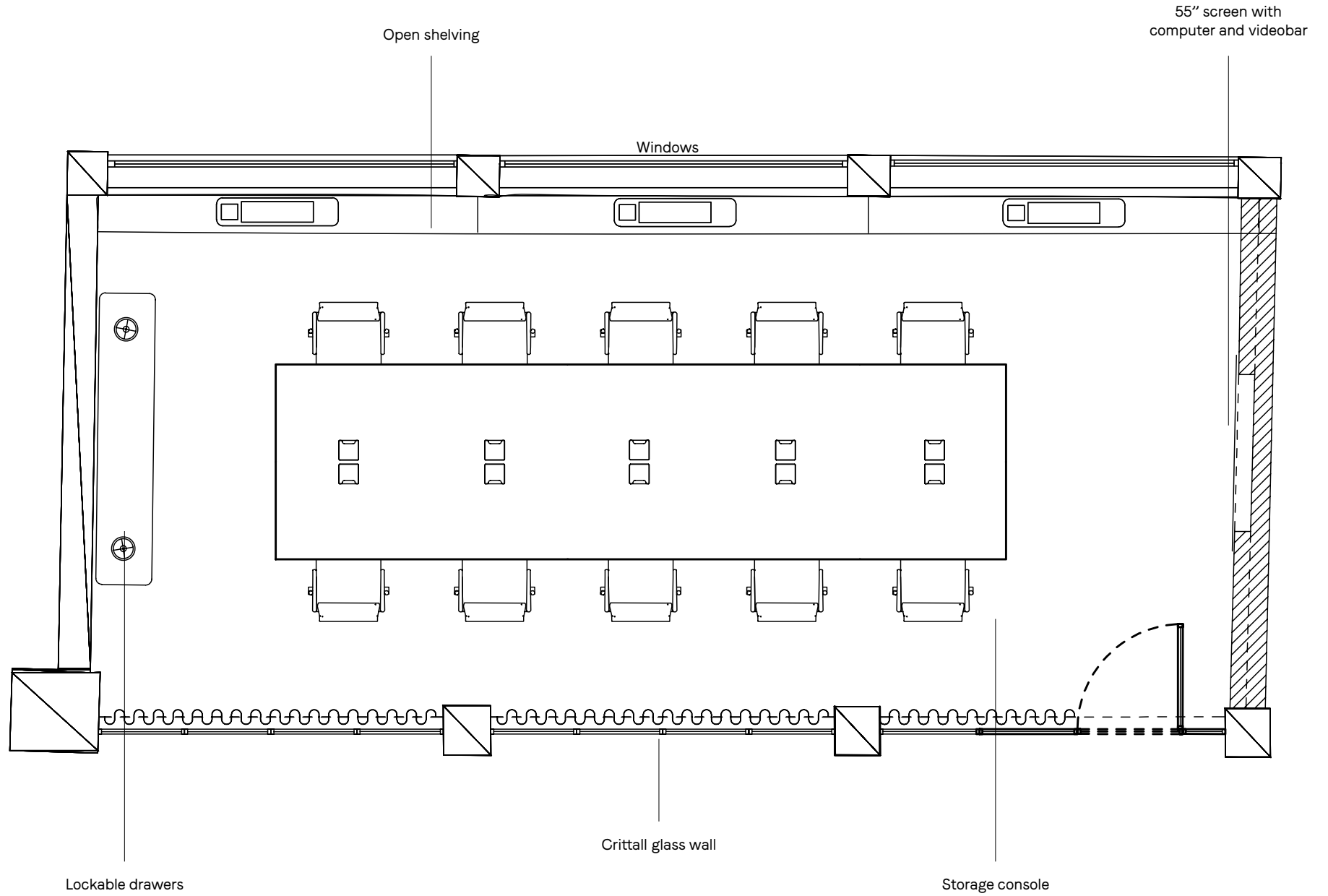


### OFFICE FOUR SECOND FLOOR

- Open plan
- Lockable storage drawers
- Private meeting room with screen
- Two phone booths
- Kitchenette with breakout table
- Communal large screen
- Additional lounge area
- Shower room
- Bathrooms
- Custom-built wooden desks
- Humanscale ergonomic chairs

Seats 30  
2297 sq ft

DEAN STREET



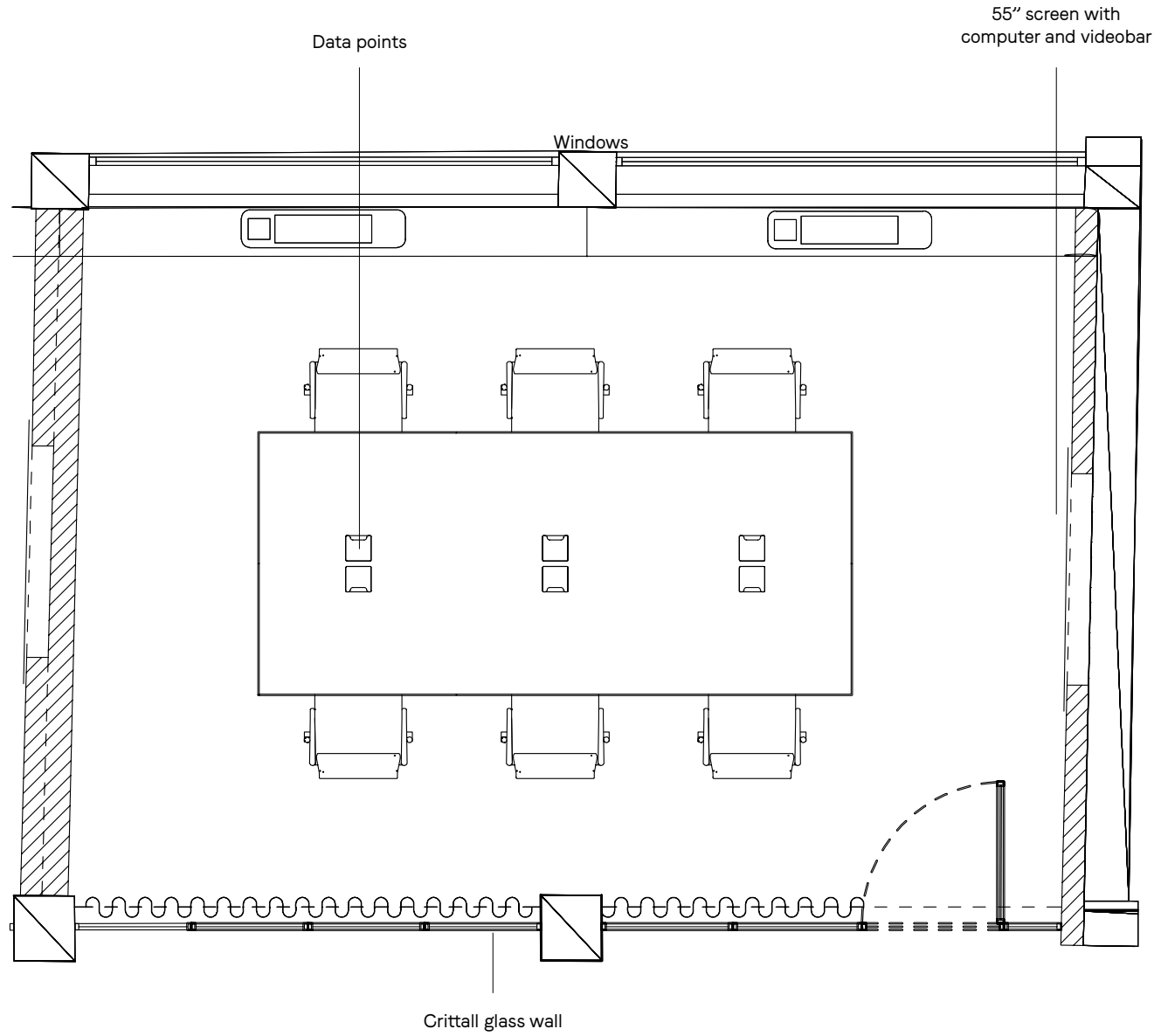
**OFFICE FIVE** SECOND FLOOR

- Natural light
- Lockable storage drawers
- Large screen, powered by PC
- Bose Videobar 1
- Custom-built wooden desks
- Humanscale ergonomic chairs

Seats 10  
457 sq ft



DEAN STREET

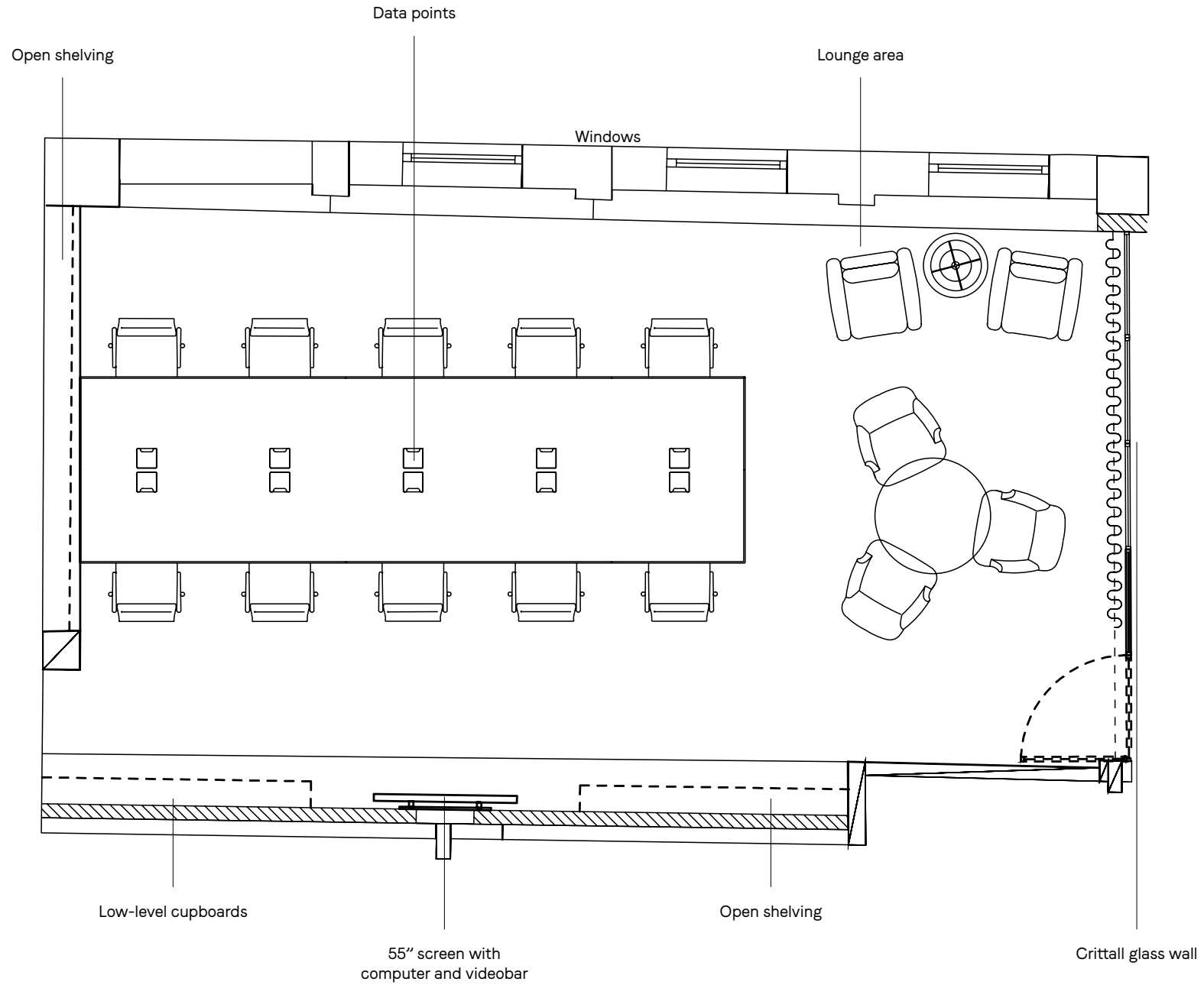


**OFFICE SIX** SECOND FLOOR

- Natural light
- Large screen, powered by PC
- Bose Videobar 1
- Custom-built wooden desks
- Humanscale ergonomic chairs

Seats 6  
304 sq ft

DEAN STREET



OFFICE SEVEN THIRD FLOOR

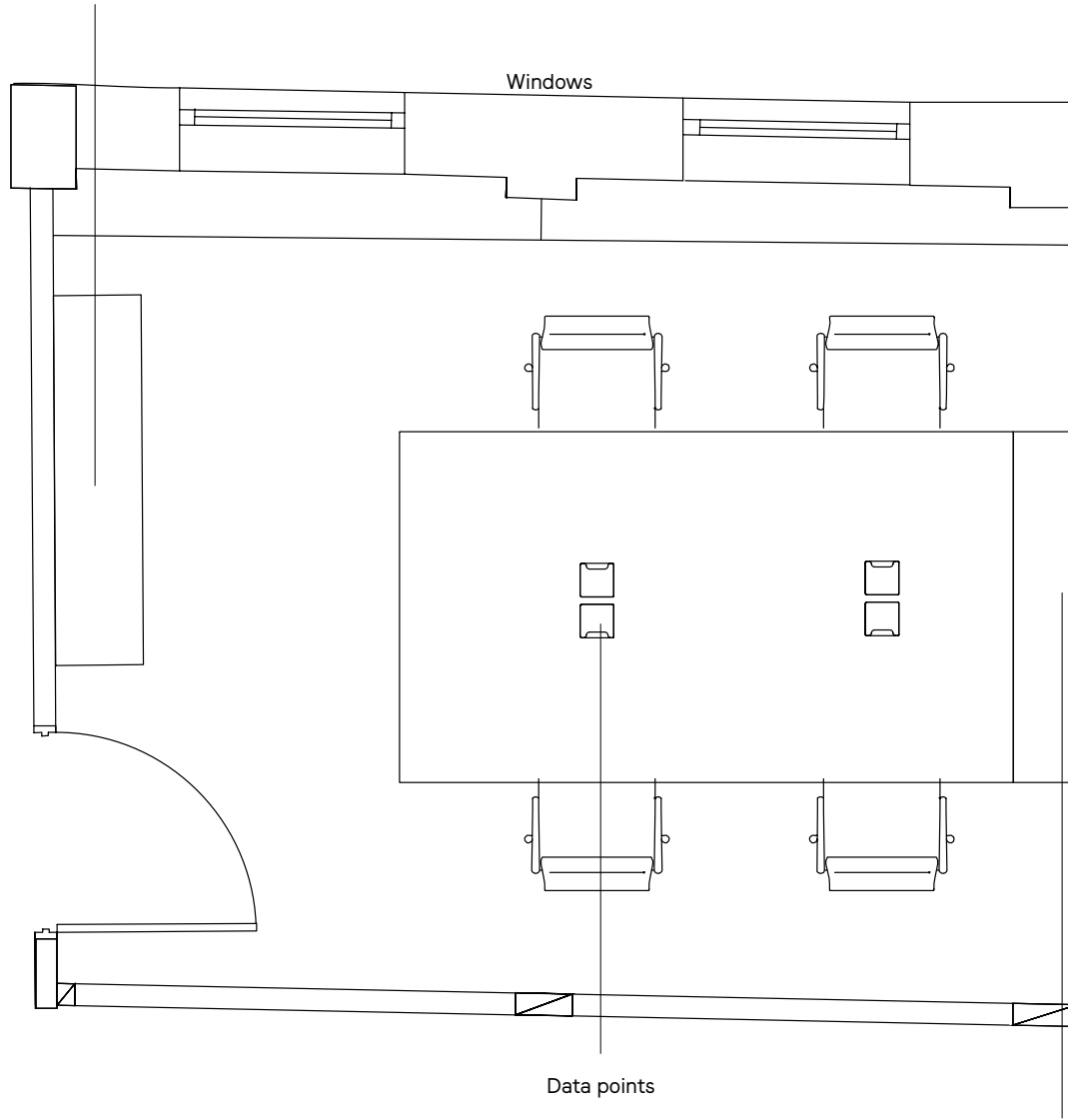
- Natural light
- Overlooking Dean Street
- Cupboards and shelving
- Large screen, powered by PC
- Bose Videobar 1
- Custom-built wooden desks
- Humanscale ergonomic chairs

Seats 10  
541 sq ft

DEAN STREET

Lockable drawers

Windows



Data points

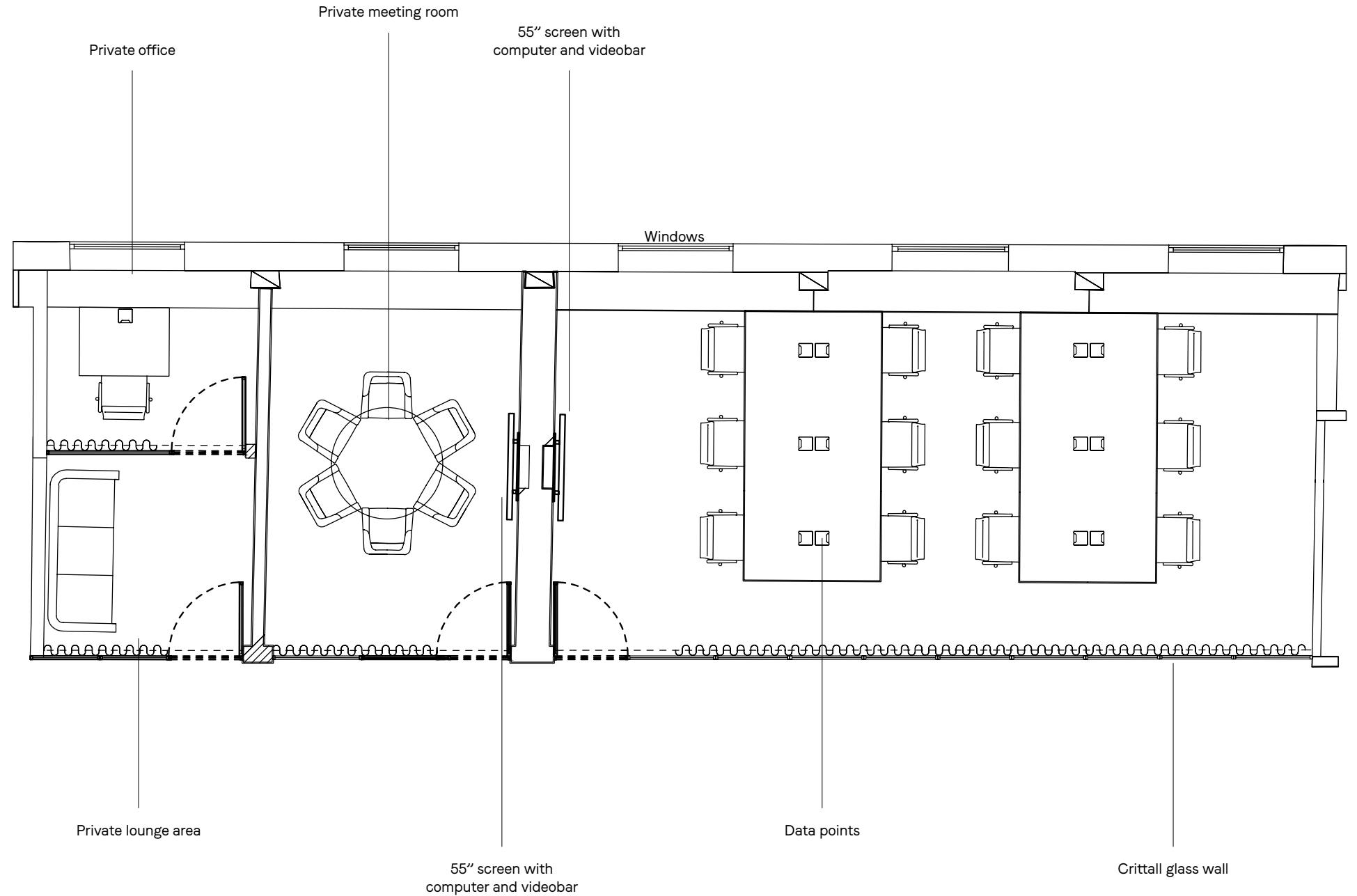
55" screen with  
computer and videobar

OFFICE EIGHT THIRD FLOOR

- Natural light
- Overlooking Dean Street
- Lockable storage drawers
- Large screen, powered by PC
- Bose Videobar 1
- Custom-built wooden desks
- Humanscale ergonomic chairs

Seats 10  
541 sq ft

DEAN STREET

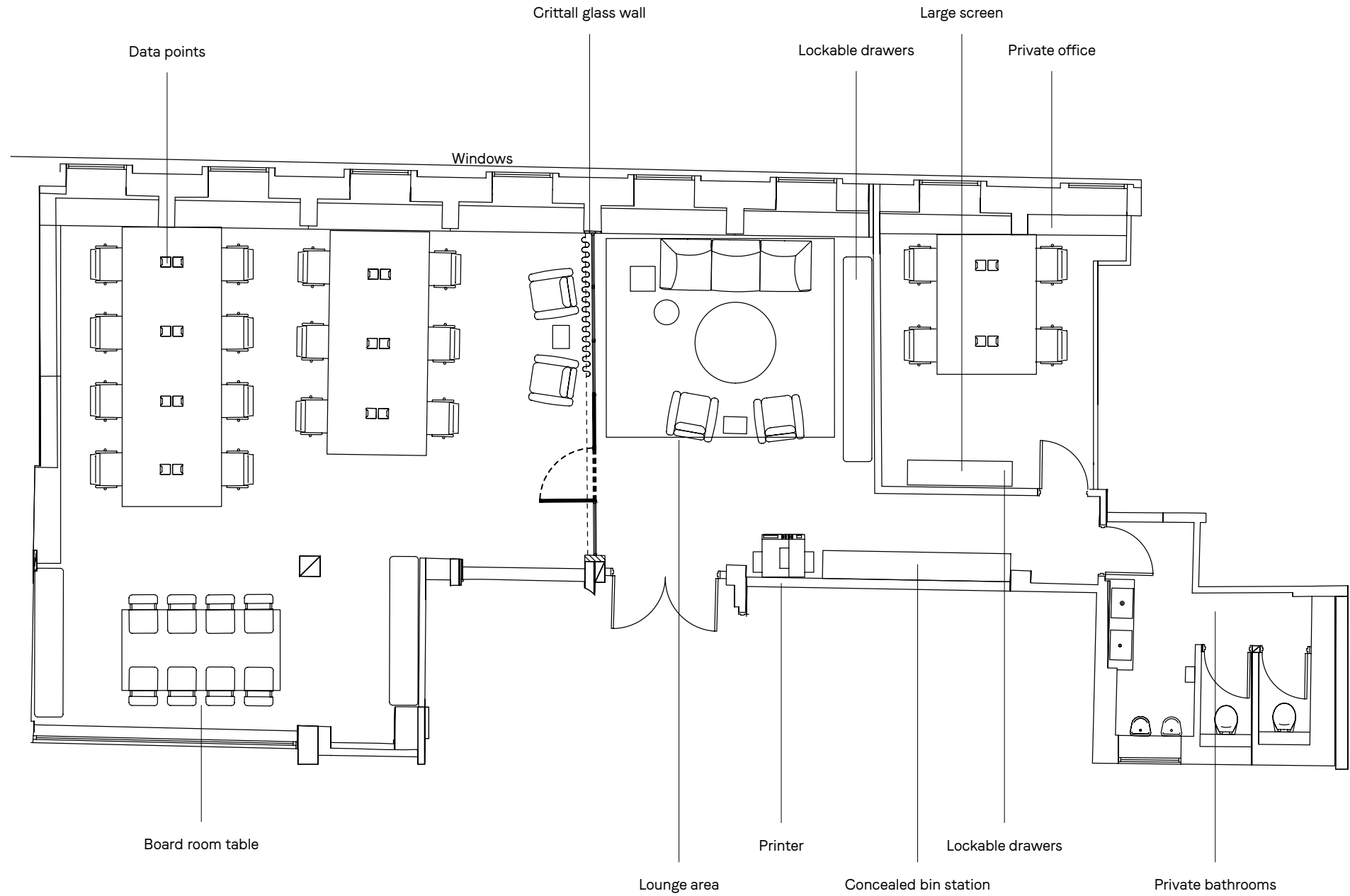


OFFICE NINE THIRD FLOOR

- Natural light
- Overlooking the courtyard
- Private office with lounge area
- Private meeting room
- Two large screens, powered by PC
- Bose Videobar 1
- Custom-built wooden desks
- Humanscale ergonomic chairs

Seats 12  
735 sq ft

DEAN STREET

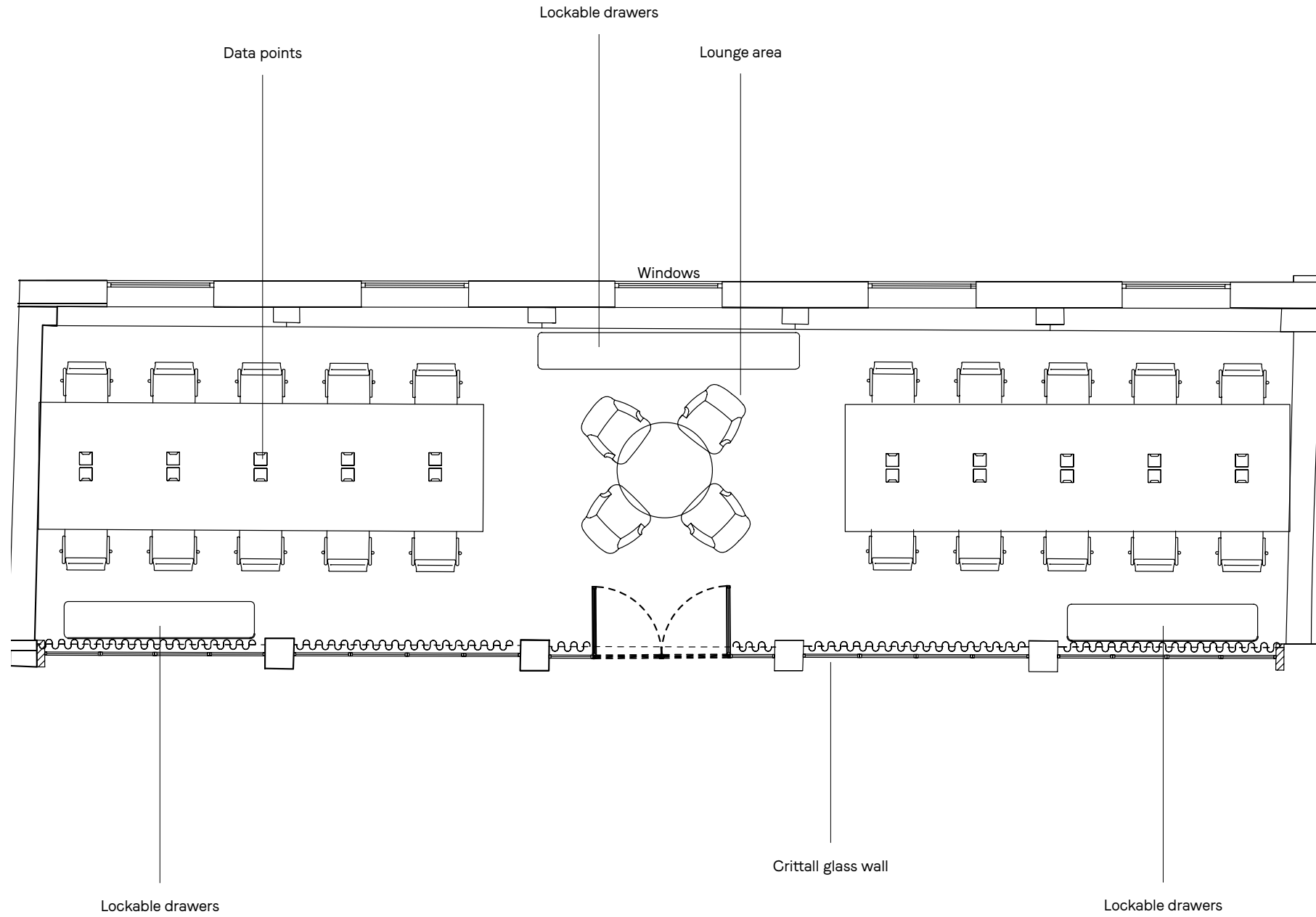


OFFICE TEN THIRD FLOOR

- Natural light
- Overlooking Richmond Mews
- Plenty of storage
- Large screen for sharing
- Private office
- Private toilets
- Printing station
- Open meeting room area
- Additional lounge area
- Custom-built wooden desks
- Humanscale ergonomic chairs

Seats 18  
1463 sq ft

DEAN STREET



OFFICE ELEVEN THIRD FLOOR

- Natural light
- Overlooking the courtyard
- Lockable storage drawers
- Custom-built wooden desks
- Humanscale ergonomic chairs

Seats 20  
757 sq ft

SOHO WORKS

