

The image shows a modern, stylish lounge or bar interior. The space is characterized by large floor-to-ceiling windows that offer a panoramic view of a city skyline. The ceiling is made of dark wood with exposed beams. The floor is a light-colored, polished material. In the foreground, there are several round wooden tables with cane-backed chairs. A long, curved bar with a light green base and a dark top is visible in the middle ground. Behind the bar, there are shelves stocked with various bottles. To the left, there are more tables and chairs, some with decorative lamps. The overall atmosphere is sophisticated and contemporary.

180 HOUSE Private events



180 Strand, London WC2R 1EA, United Kingdom

T: +44 (0) 20 3985 0000

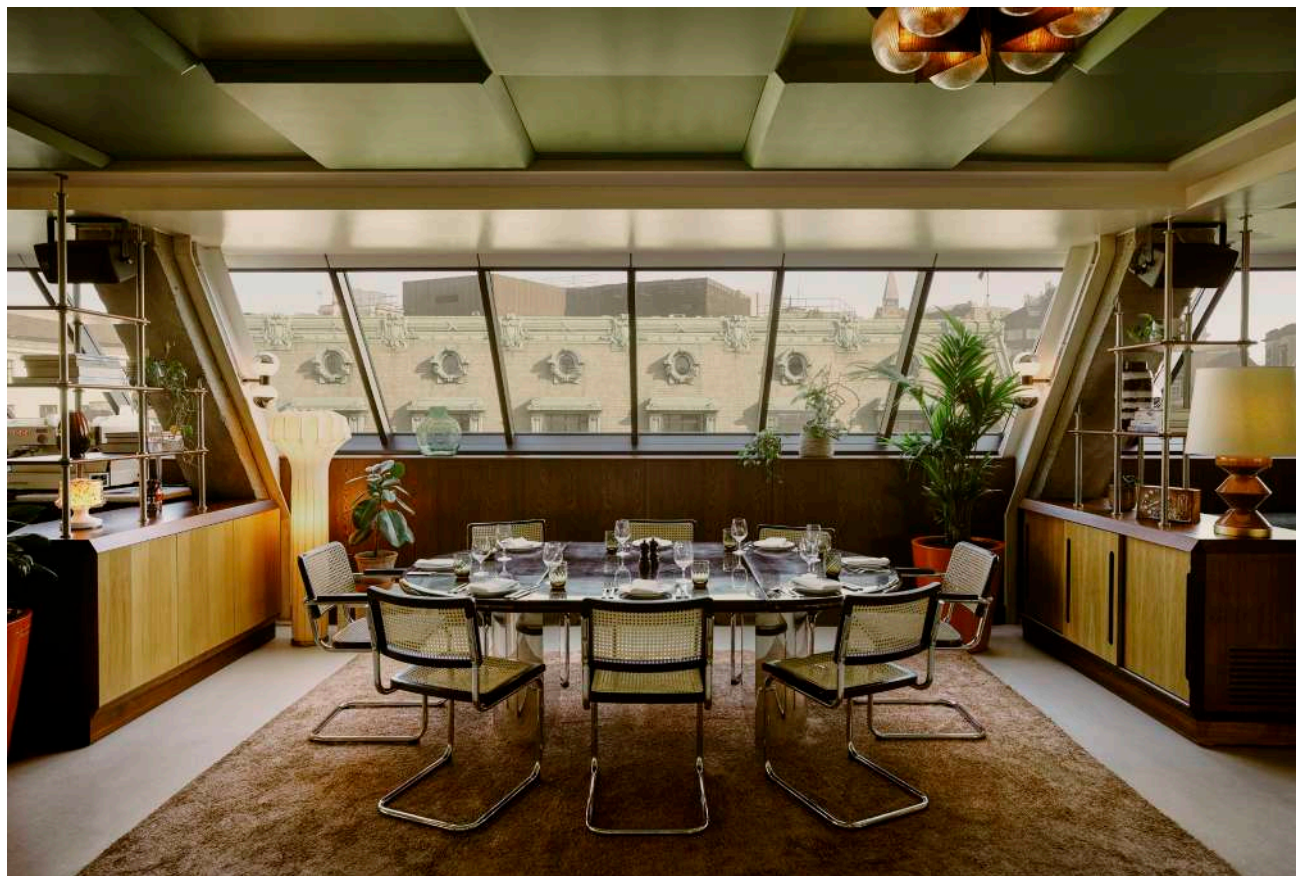
E: privateevents.eastlondon@sohohouse.com

Welcome

Located in central London, 180 House features multiple spaces suited to hosting everything from brand events, special occasions, parties and private dining to meetings and conferences. The spaces can be hired by both members and non-members.







THE HOUSE

Discover the rooftop of the House, featuring the spacious 270 area for parties and brand events, or the open-air South Terrace suited to celebrations and drinks receptions. For a more intimate setting, opt for The Dining Table for a semi-private space near the main restaurant.

On the first floor, there are carefully designed meeting rooms and apartments suitable for morning meetings, all-day workshops and private dinners.





PARTIES

Celebrate a special occasion or host a drinks reception in one of our spaces equipped with private bars, sound systems and DJ decks.

270

SET-UP	Standing
CAPACITY	150

SOUTH TERRACE

SET-UP	Standing
CAPACITY	40

WEST WING

SET-UP	Standing
CAPACITY	150

PRIVATE DINING

Invite a small group to dine privately in one of our spaces, or take over the 270 area on the ninth floor and enjoy dinner and drinks with up to 60 guests.

On the first floor, our apartment rooms can be combined to create a larger, free-flowing space. Ideal for cosy dinners and private parties.

THE APARTMENTS (PRIVATE DINING)

SET-UP	Standing	Seated
CAPACITY	from 100	from 8

THE DINING TABLE (SEMI-PRIVATE DINING)

SET-UP	Standing	Seated
CAPACITY	25	10



MEETING ROOMS

Discover our carefully designed meeting rooms and workspaces, suitable for morning meetings, all-day workshops and late-night dinners.

All rooms come with a large screen for presenting, and additional equipment is available upon request. Plus, there's the option to have lunch included.

MEETINGS	Standing	Seated
WEST APARTMENT	40	20
KINGS	25	10
ST CLEMENTS	25	10
MCKENNAL	15	8
SITTING ROOM	10	5
LIVING ROOM	20	8
DINING ROOM	20	8



CONFERENCE ROOM

Discover our East Courtyard, a versatile event space that's ideal for hosting presentations or panel talks, with a capacity of up to 60 people. It can also be cleared of furniture - perfect for brand launches and press days, as well as drinks receptions.

The East Courtyard comes with a 90-inch screen for presenting, microphones and technical support - and additional equipment is available upon request. Plus, there's the option to have lunch included.

EAST COURTYARD (CONFERENCE STYLE)

SET-UP	Standing	Seated
CAPACITY	60	25



COLLECTIVES

Our spaces can be combined to create a larger, free-flowing space between apartments. Perfect for day to night meetings and House parties.

WEST WING

SET-UP	Standing	Seated
CAPACITY	from 100	from 8

KINGS ROOM AND ST CLEMENTS

SET-UP	Standing	Seated
CAPACITY	60	25



BRAND EVENTS

Hire one of our spaces for a brand activation, product launch or press day. Enjoy private access to a spacious area that can be tailored to your event with views across London, a fully equipped bar and a sound system.

NINTH FLOOR

CAPACITY

250





ABOUT US

We have Soho Houses all over the world, from Miami and Mumbai to Berlin and Barcelona, plus a number of public restaurants, townhouses, screening rooms, retail offerings, and workspaces.

CONTACT US

Telephone: +44 (0) 20 3985 0000
Email: privateevents.eastlondon@sohohouse.com

sohohouse.com

