

The image shows a sophisticated interior space, likely a lounge or event venue. In the foreground, a large, rectangular indoor swimming pool with a white tiled edge and a green tile border is visible. The water in the pool reflects the lights and plants above. Behind the pool, a long bar counter is lined with various bottles and glasses. Above the bar, several large potted plants, including palm trees and monstera, are displayed in ornate pots. The ceiling is white with several large, spherical pendant lights hanging from it. The overall atmosphere is modern and elegant.

SOHO HOUSE HONG KONG

Private events

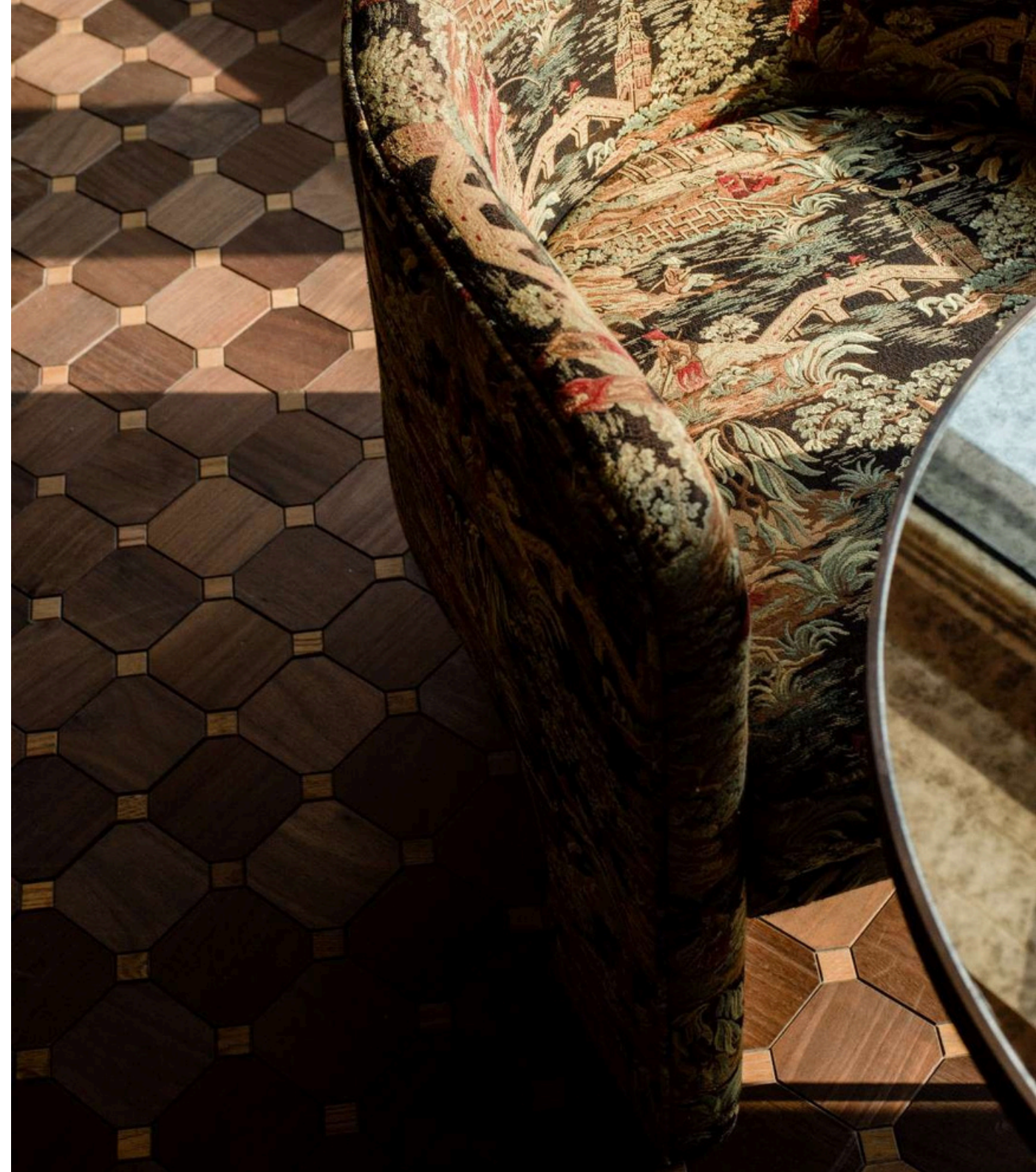
33 Des Voeux Road West, Sheung Wan, Hong Kong

T: +852 5803 8888

E: privatehire.hongkong@sohohouse.com

Welcome

Spread across six floors within a 28-storey building in the Sheung Wan neighbourhood, Soho House Hong Kong overlooks Victoria Harbour and the islands. The House features multiple spaces suited to private events – from meetings and dinners to large parties and workshops.





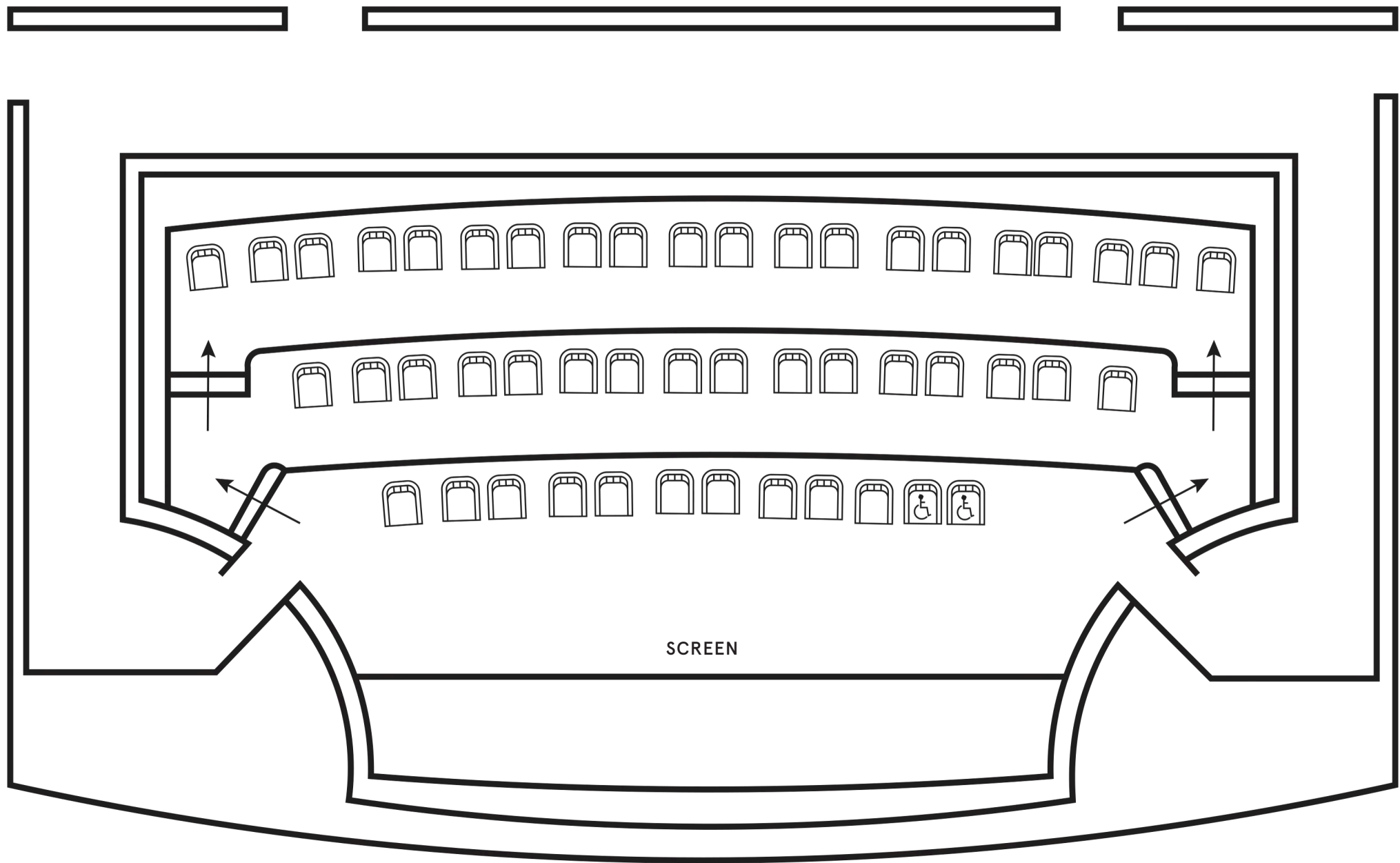
SCREENING ROOM

Invite your guests to a private screening, presentation or conference inside this fully equipped room, featuring comfortable velvet armchairs and footstools. For pre-screening drinks, hire this space along with the Pink Room.

| | |
|---|----------|
| Members only | |
| Fee: Rent with a movie supplied by SH: HKD 1,200 per hour (min. 2 hours), plus a copyright fee that varies based on the movie chosen. | SET-UP |
| | Seated |
| Rent only, without any movie supplied by SH: HKD 1,900 per hour (min. 2 hours). | CAPACITY |
| | 48 |







SCREENING ROOM



PINK ROOM

Located next door to the screening room, hire this cosy space with a semi-circular bar and lounge seating for pre-screening drinks.

| | Members only | |
|----------|--------------|--------|
| SET-UP | Standing | Seated |
| CAPACITY | 40 | 24 |

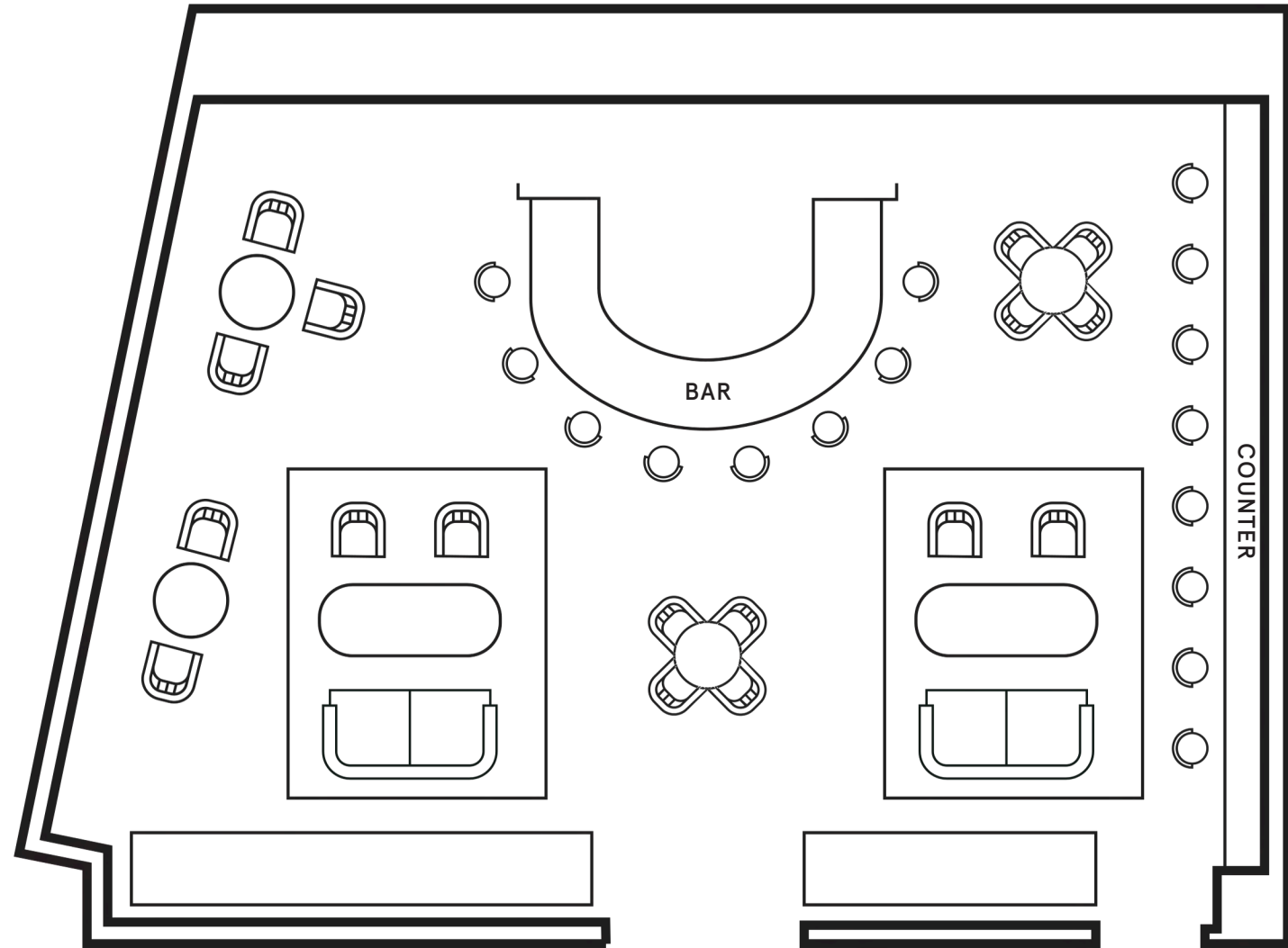
Food and drink minimum spend:

Monday to Thursday
Lunch: HKD 7,500
Dinner: HKD 15,000

Friday to Sunday and public holidays
Lunch: HKD 10,000
Dinner: HKD 20,000

There is a 10% service charge added for lunch and dinner (four hours dining time)





LOUNGE

PINK ROOM

SOLA ROOM
Overlooking Victoria Harbour with a long table and TV, this room is ideal for private dining experiences or meetings.

Food and drink minimum spend:
Monday to Thursday
Lunch: HKD 2,000
Dinner: HKD 4,000

Friday to Sunday and public holidays
Lunch: HKD 3,000
Dinner: HKD 5,000

There is a 10% service charge added for lunch and dinner (four hours dining time)

| | |
|----------|--------------|
| | Members only |
| <hr/> | |
| SET-UP | Seated |
| <hr/> | |
| CAPACITY | 14 |
| <hr/> | |





LAZY SAM ROOM

At the centre of the room is a round table with a lazy Susan, suited to family-style dining experiences. Make the most of the TV for meetings or conferences.

Food and drink minimum spend:

Monday to Thursday
Lunch: HKD 2,000
Dinner: HKD 4,000

Friday to Sunday and public holidays
Lunch: HKD 3,000
Dinner: HKD 5,000

There is a 10% service charge added for lunch and dinner (four hours dining time)

| | |
|----------|--------------|
| | Members only |
| SET-UP | Seated |
| CAPACITY | 10 |





BLUE ROOM

With views overlooking the city and a fully equipped bar, host a drinks reception or celebration in this space.

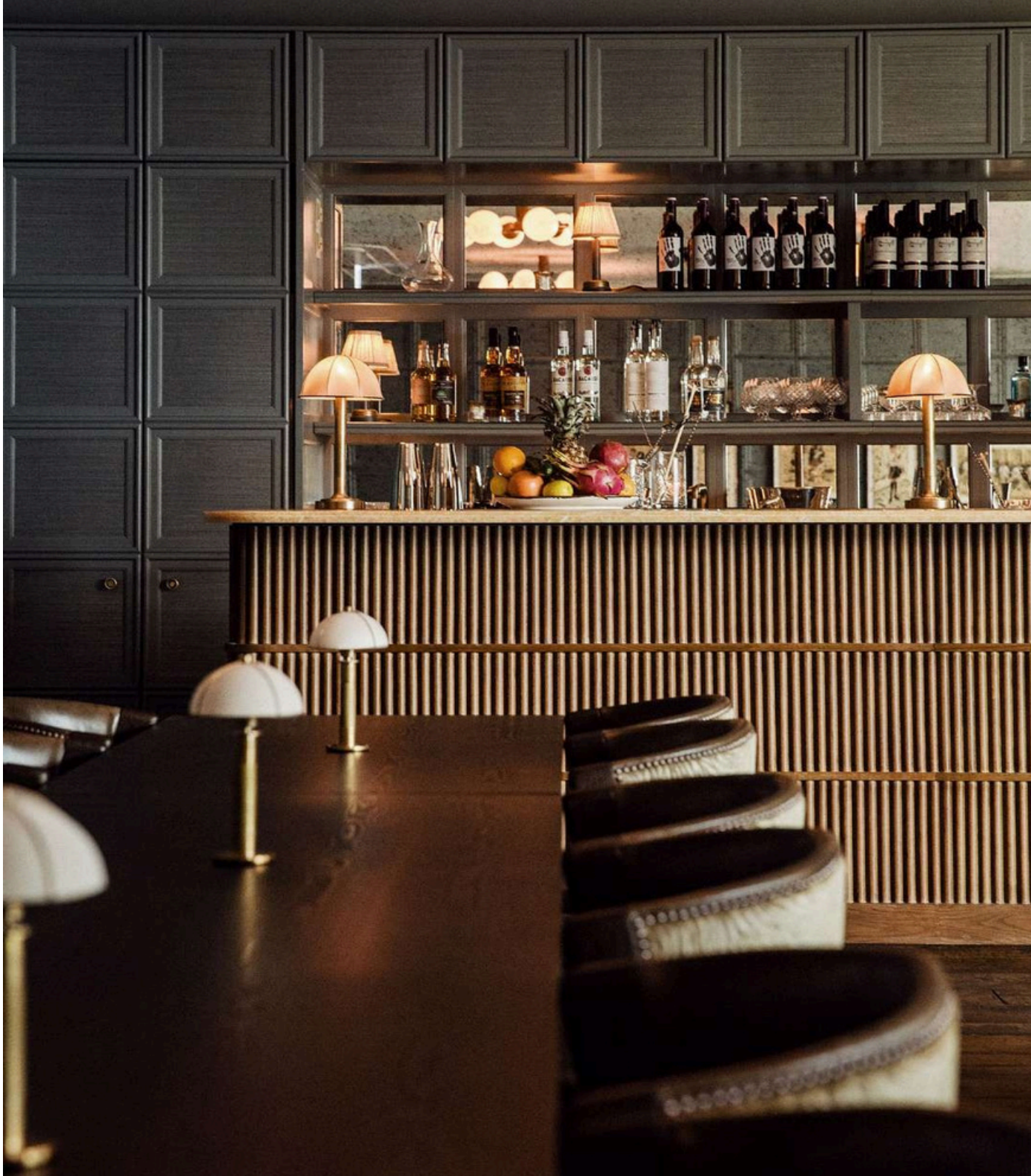
| | | |
|----------|--------------|--------|
| | Members only | |
| SET-UP | Standing | Seated |
| CAPACITY | 90 | 60 |

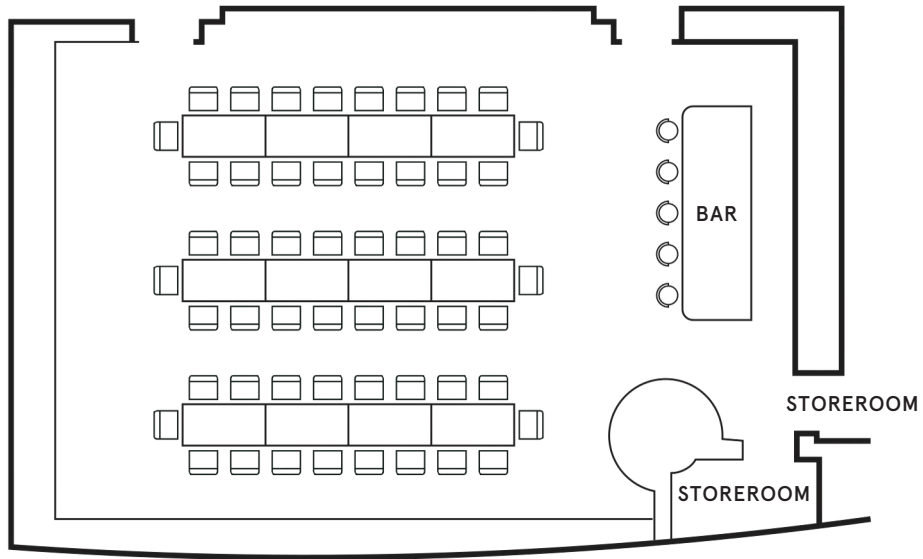
Food and drink minimum spend:

Monday to Thursday
Lunch: HKD 15,000
Dinner: HKD 30,000

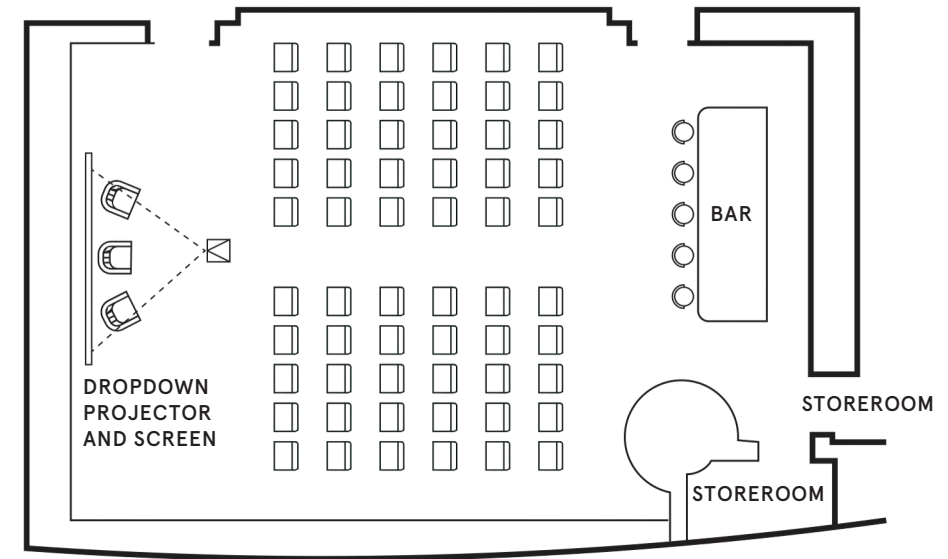
Friday to Sunday and public holidays
Lunch: HKD 20,000
Dinner: HKD 40,000

There is a 10% service charge added for lunch and dinner (four hours dining time)

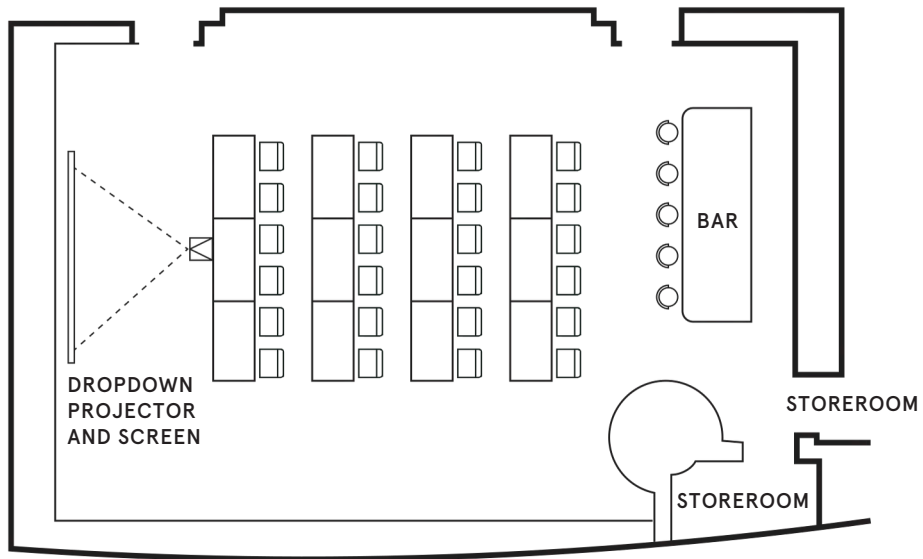




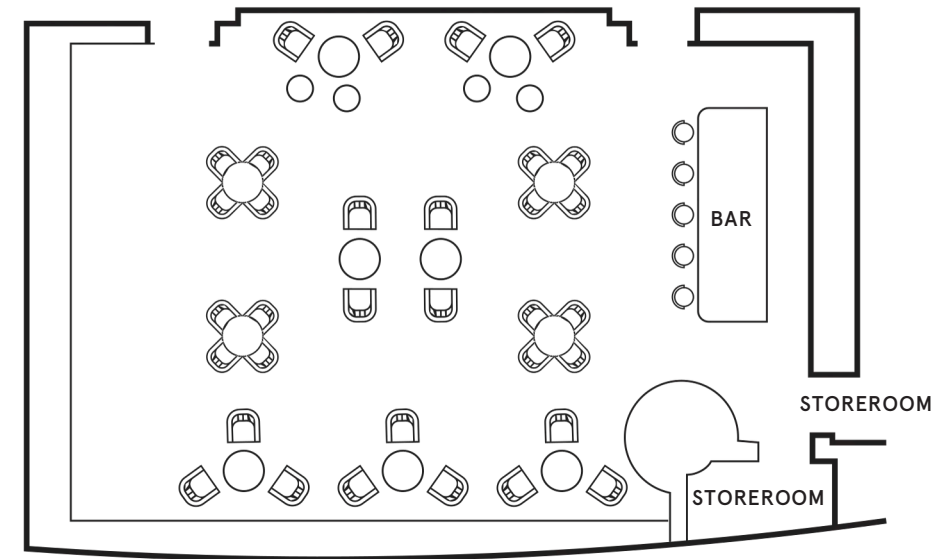
DINING



THEATRE



MEETING



LOUNGE



GREEN ROOM

A stage and large screen provide space for brand presentations or performances, while a fully equipped bar is ideal for drinks receptions.

| | | |
|----------|--------------|--------|
| | Members only | |
| SET-UP | Standing | Seated |
| CAPACITY | 40 | 22 |

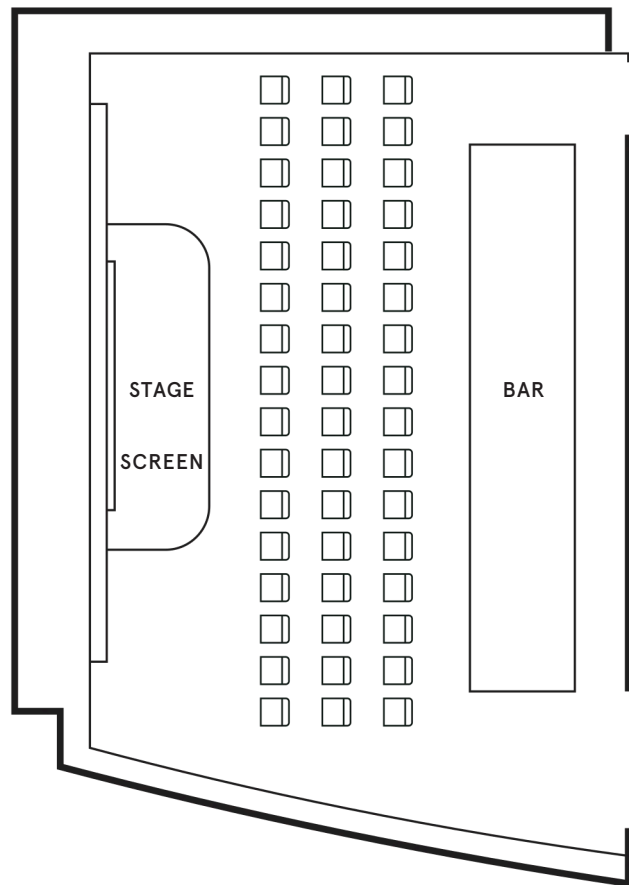
Food and drink minimum spend:

Monday to Thursday
Lunch: HKD 7,500
Dinner: HKD 15,000

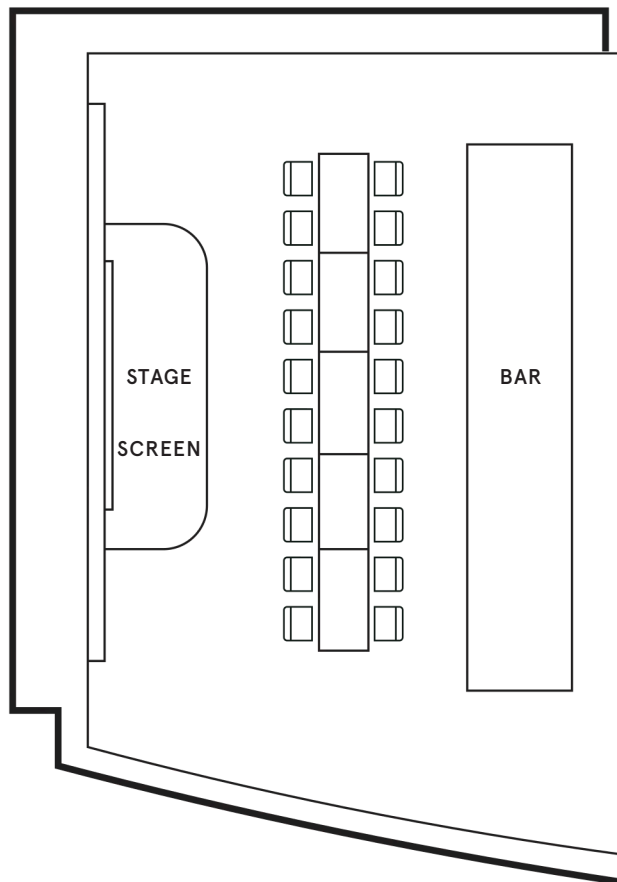
Friday to Sunday and public holidays
Lunch: HKD 10,000
Dinner: HKD 20,000

There is a 10% service charge added for lunch and dinner (four hours dining time)

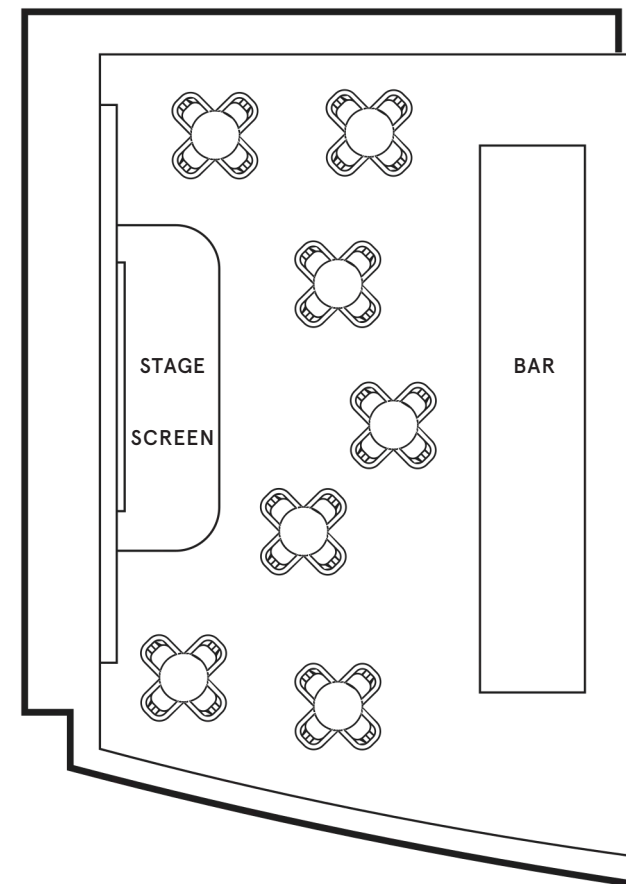




THEATRE



DINING



LOUNGE

GREEN ROOM



YELLOW ROOM

Soak up views of the city's skyline while hosting a private dining event in this space with a fully equipped bar and long table.

| | Members only | |
|----------|--------------|--------|
| SET-UP | Standing | Seated |
| CAPACITY | 50 | 26 |

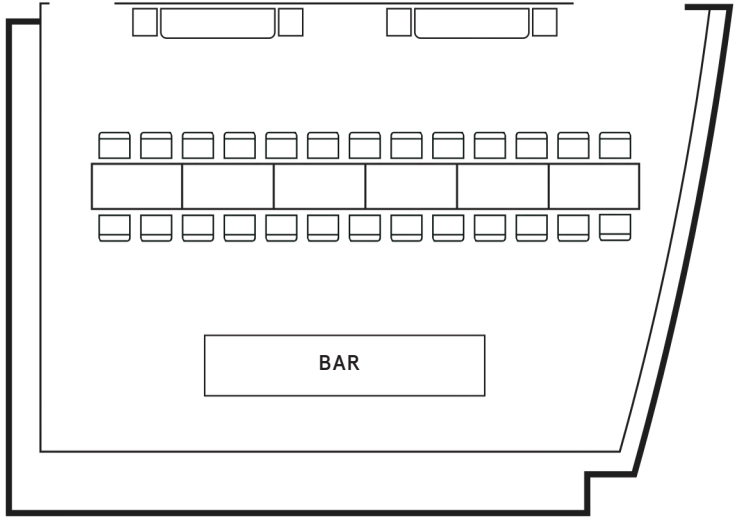
Food and drink minimum spend:

Monday to Thursday
Lunch: HKD 7,500
Dinner: HKD 15,000

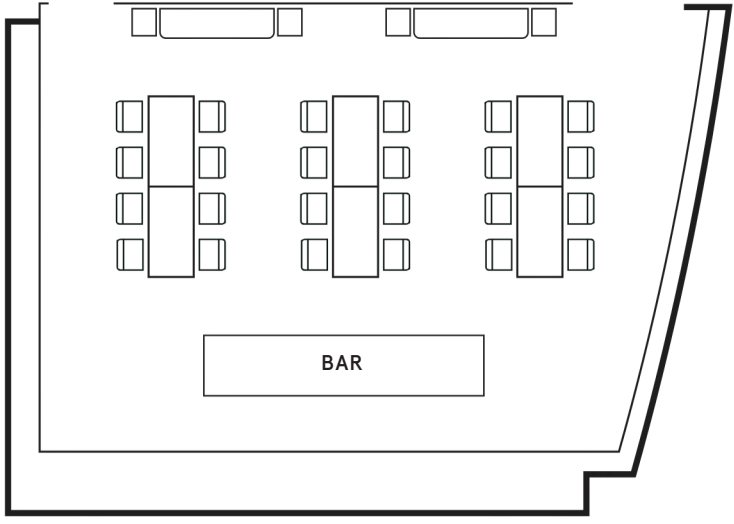
Friday to Sunday and public holidays
Lunch: HKD 10,000
Dinner: HKD 20,000

There is a 10% service charge added for lunch and dinner (four hours dining time)

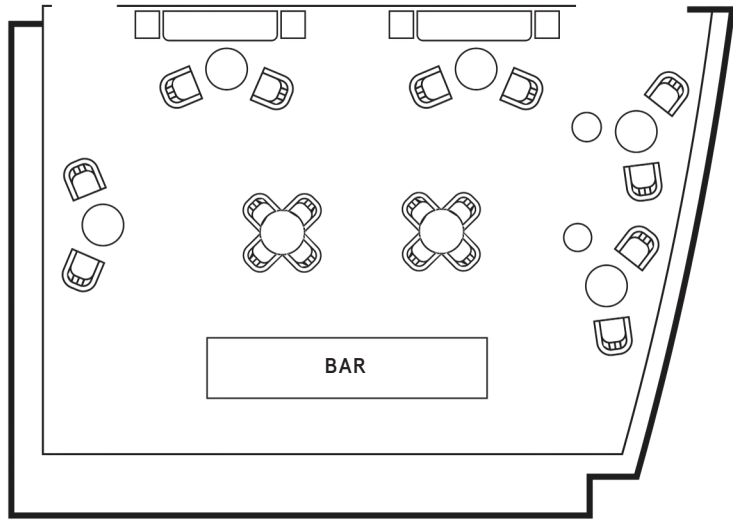




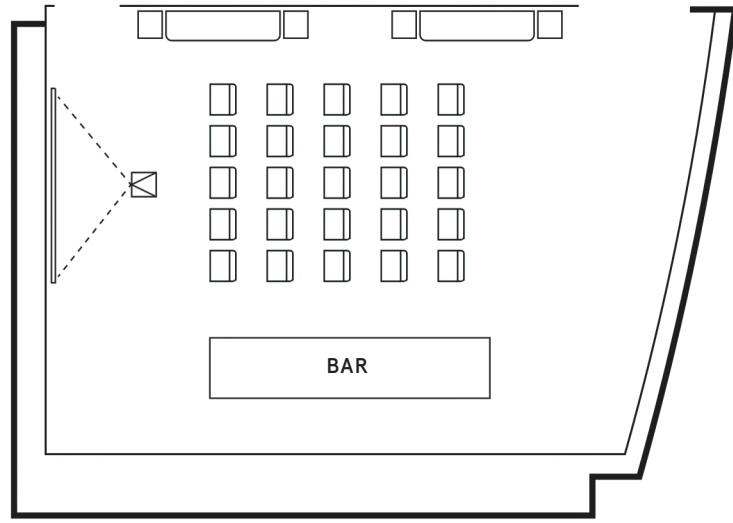
DINING



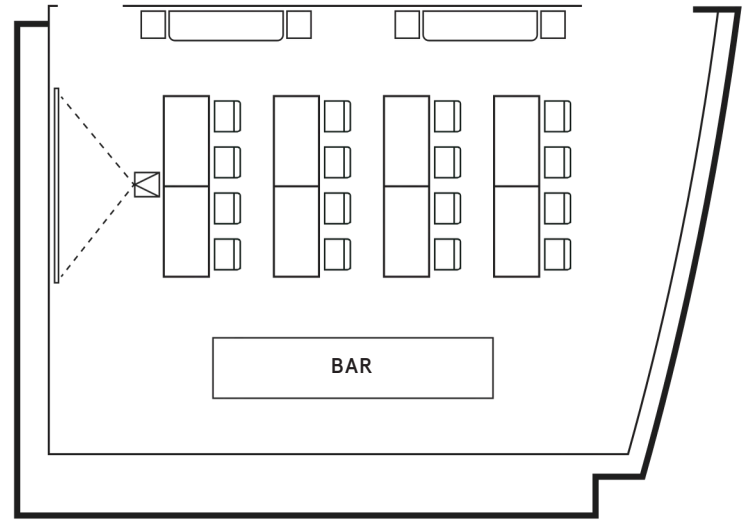
DINING



LOUNGE



THEATRE



MEETING



POOL ROOM

This space is suited to large parties and celebrations. It features a large pool, two fully equipped bars, daybeds and DJ decks, as well as sliding doors that open onto a private terrace.

Rate available upon request.

| | | |
|----------|----------|--------|
| SET-UP | Standing | Seated |
| CAPACITY | 230 | 80 |



HOUSE STUDIO

Take over this large studio space for an exhibition, brand event or party and tailor the versatile space to suit your needs.

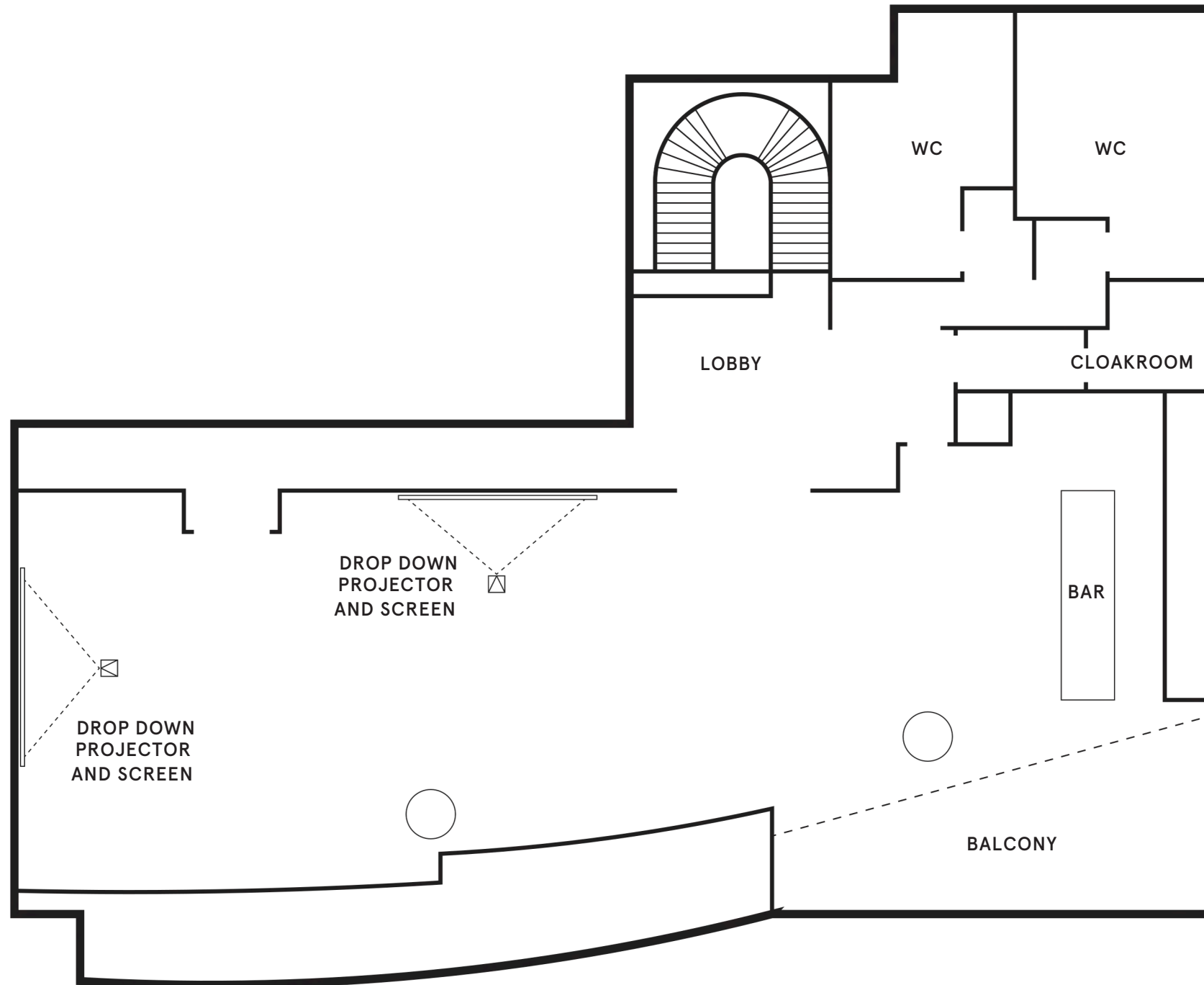
Fee:
HKD 10,000 per hour (minimum of four hours)
HKD 100,000 per day

15% off for Soho House members
(A member must attend the event at all times)

| | | |
|----------|----------|--------|
| SET-UP | Standing | Seated |
| CAPACITY | 220 | 120 |







STUDIO DUPLEX

Occupying the entire second and third floor of the House – connecting both levels by an internal staircase – the Studio Duplex is a versatile space that’s suited to pop-ups, exhibitions and large events.

Fee for second and third floor
HKD 9,000 per hour (minimum of two hours) | HKD 90,000 (full day)

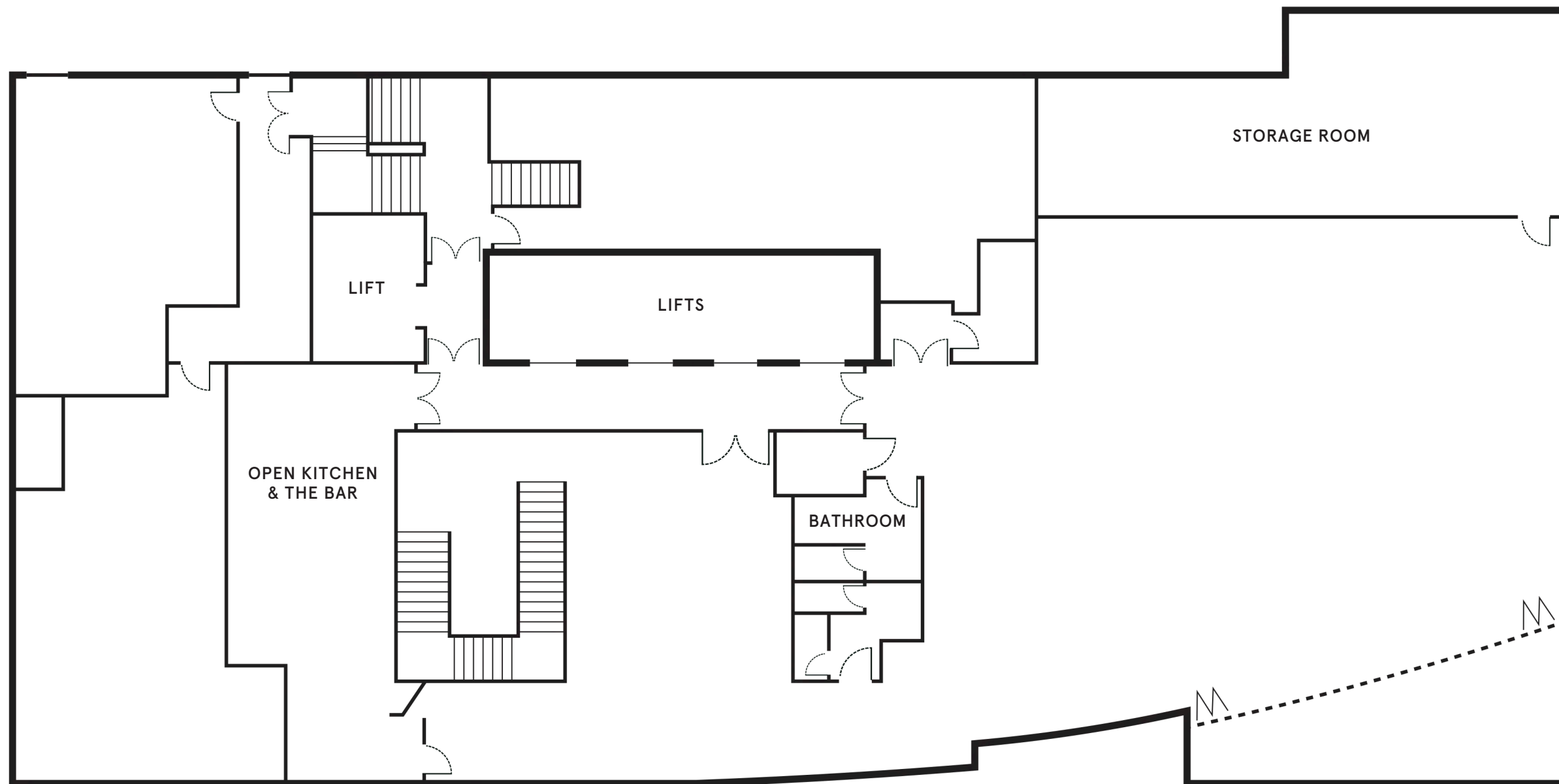
Fee for second floor only
HKD 4,000 per hour (minimum of two hours) | HKD 40,000 (full day)

Fee for third floor only
HKD 5,000 per hour (minimum of two hours) | HKD 50,000 (full day)

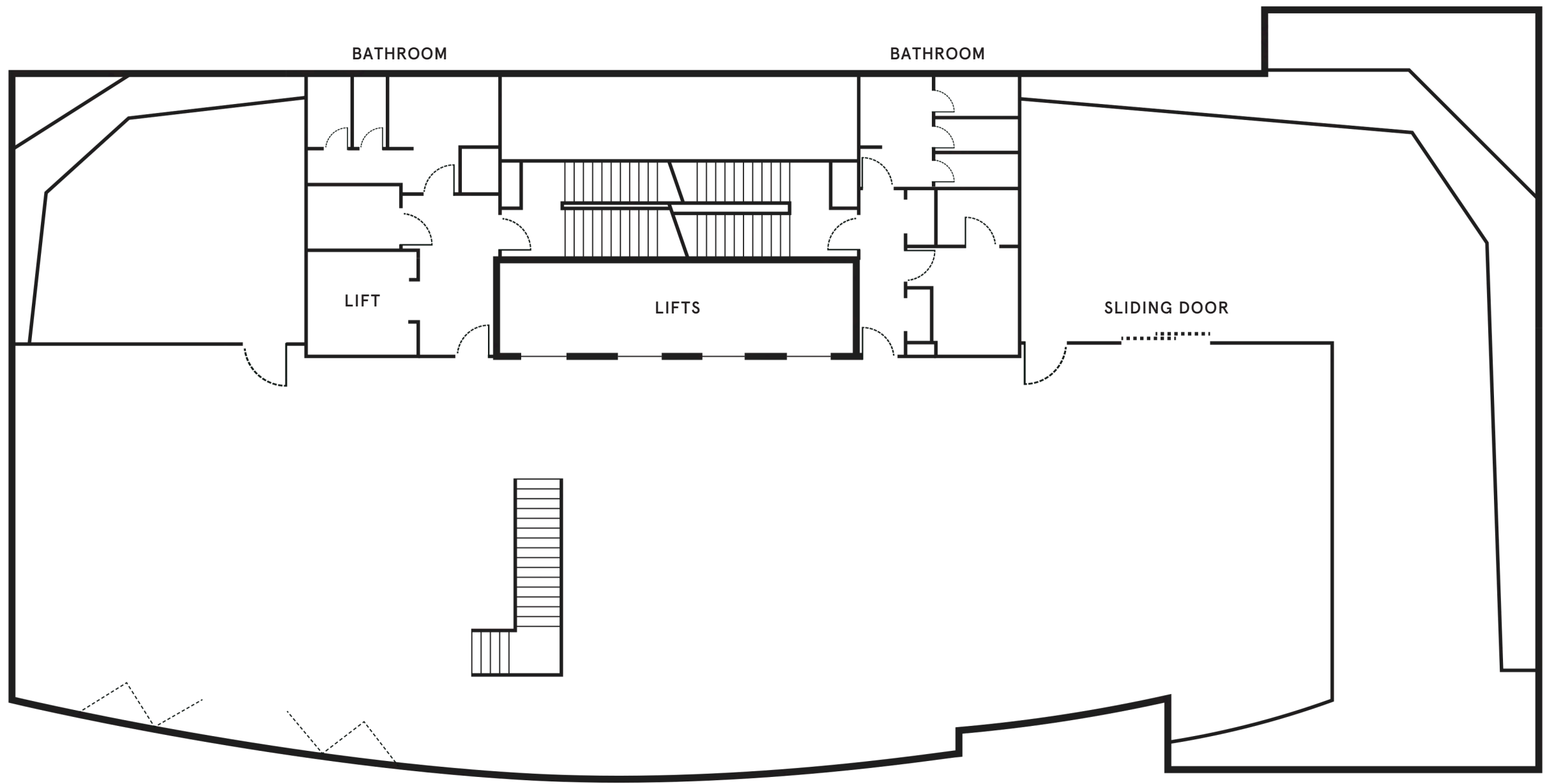
15% off for Soho House members
(A member must attend the event at all times)

| | | |
|----------|----------|--------|
| SET-UP | Standing | Seated |
| CAPACITY | 600 | 220 |





STUDIO DUPLEX SECOND FLOOR



STUDIO DUPLEX THIRD FLOOR



ABOUT US

We have Soho Houses all over the world, from Miami and Mumbai to Berlin and Barcelona, plus a number of public restaurants, townhouses, screening rooms, retail offerings, and workspaces.

CONTACT US

Telephone: +852 5803 8888

Email: privatehire.hongkong@sohohouse.com
sohohouse.com

