

THE ARCHES

SOHO WORKS UK

Meeting rooms

SW

Soho Works 180 Strand, Soho Works Dean Street,
Soho Works Shoreditch, Soho Works White City

About Soho Works

Soho Works is an international network of workspaces by Soho House, designed and equipped to help creative thinkers and businesses connect, collaborate, and grow.

Our spaces combine the 'home away from home' feeling of our Houses with all the tools, technology and equipment to help you do your best work. Each workspace offers meeting rooms, flexible private hire options and a curated programme of member events to help you and your business grow.

Open now at 180 Strand, Dean Street, White City and Shoreditch.





SOHO WORKS 180 STRAND, LONDON

Based inside a Brutalist building on London's Strand, which is also home to The Store X, Dazed Media Group, IGM and The Vinyl Factory, our 20,000 sq ft workspace is set across two floors. It has a private loft space, meeting rooms, a podcast recording studio, phone booths, and a fully equipped kitchen.

180 Strand, London WC2R 1EA

T: +44 (0) 20 3985 0000

E: reception.180@sohoworks.com



Kings meeting room at Soho Works 180 Strand



KINGS

SEATS 16

Boardroom style

Includes: a large screen, wired and wireless connectivity, video conferencing, podcast equipment, sound-resistant walls

£175/hour inc VAT



ST CLEMENTS

SEATS 10

Lounge style

Includes: a large screen, wireless connectivity

£150/hour inc VAT

*Kings and St Clements can be combined to create a large, free-flowing meeting space.



SITTING ROOM

SEATS EIGHT

Lounge style
Includes: a large screen,
wireless connectivity

£110/hour inc VAT

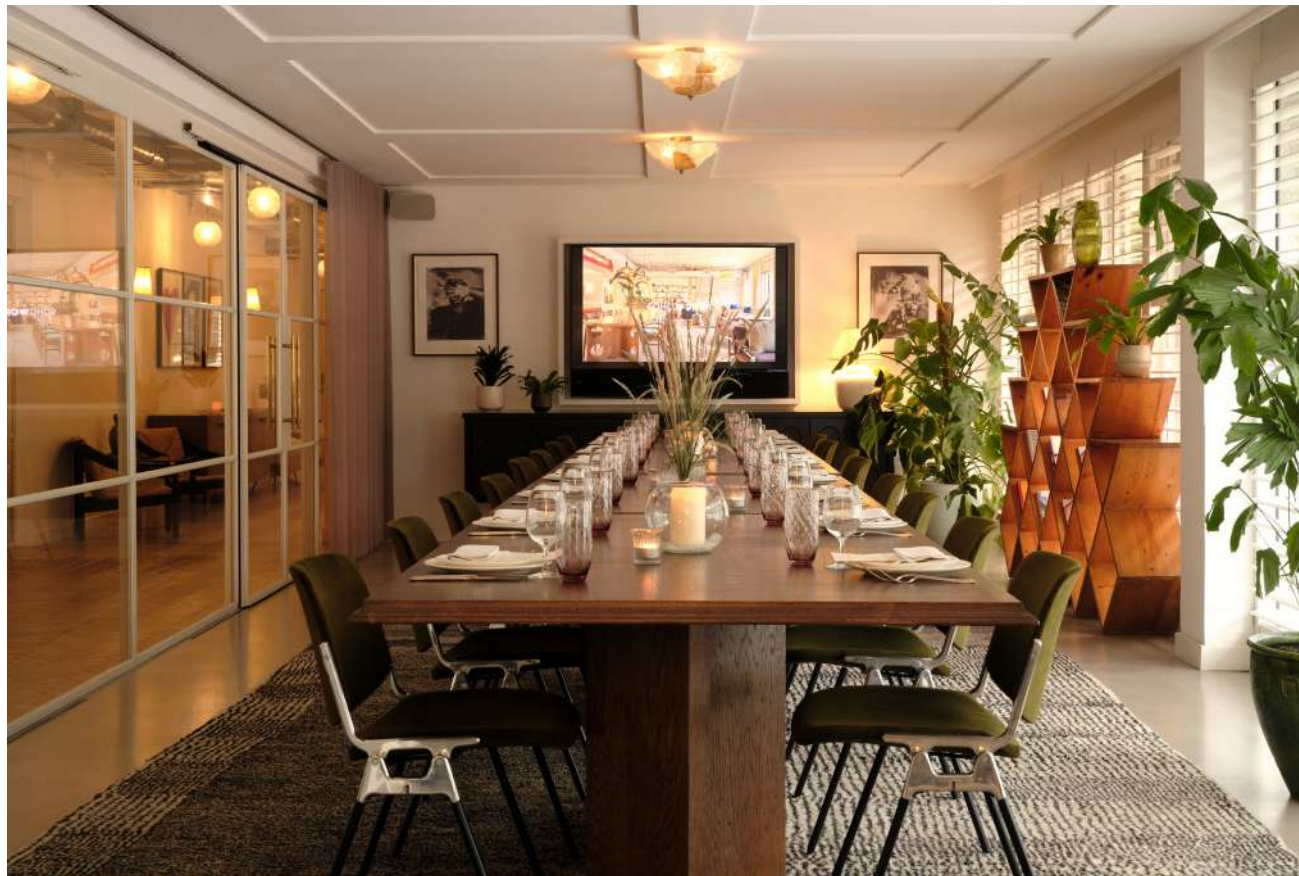


MACKENNAL

SEATS 10

Boardroom style
Includes: a 55in screen, wired and wireless
connectivity, video conferencing capabilities

£110/hour inc VAT



WEST APARTMENT

SEATS 25

Boardroom style
Includes: a large screen, wired and wireless connectivity, video conferencing, a wine fridge, and sink

£175/hour inc VAT



WEST COURTYARD

SEATS 25

Boardroom and discussion style
Includes: a large screen, wired and wireless connectivity, video conferencing, a wine fridge, and sink

£280/hour inc VAT



DINING ROOM

SEATS EIGHT

Discussion style
For bigger gatherings, combine this room with the East Courtyard for additional breakout space.
Screen available upon request.

£50/hour inc VAT



LIVING ROOM

SEATS EIGHT

Discussion style
For bigger gatherings, combine this room with the West Apartment. Screen available upon request

£50/hour inc VAT

EAST COURTYARD

SEATS 60

This flexible event space is ideal for hosting presentations or panel talks with a capacity of up to 60 people. It can also be cleared of furniture – ideal for brand launches and press days, as well as drinks receptions.

£280/hour inc VAT





Kitchen at Soho Works 180 Strand

SOHO WORKS DEAN STREET, LONDON

Located in the heart of Soho and two doors down from Soho House 76 Dean Street, our 24,000 sq ft workspace is set across four floors. It features meeting rooms, members' kitchens, a podcast room, showers, bike storage, and two courtyards.



72-74 Dean Street, London W1D 3SG

T: +44 (0) 20 7074 1500

E: reception.deanst@sohoworks.com

Reception at Soho Works Dean Street



SHAFTESBURY

SEATS 12

Boardroom style
Includes: 55in screen, wired and wireless connectivity, and can be booked with Mews 1

£90/hour (Soho Works member)
£160/hour (non-member)



MEWS 1

SEATS SIX

Lounge style
This room can be booked privately or combined with the Shaftesbury room
Does not include a screen or video conferencing capabilities

£55/hour (Soho Works member)
£115/hour (non-member)



MEWS 2

SEATS SIX

Lounge style
Includes: a 55in screen, wired and wireless connectivity, video conferencing capabilities

£90/hour (Soho Works member)
£160/hour (non-member)



OLD COMPTON

SEATS 14

Discussion style with additional lounge area
Includes: a 55in screen, wired and wireless connectivity, video conferencing capabilities

£90/hour (Soho Works member)
£160/hour (non-member)



PRIDE

SEATS EIGHT

Discussion style
Includes: a 55in screen, wired and wireless connectivity, video conferencing capabilities

£55/hour (Soho Works member)
£115/hour (non-member)



SOUTH ROOM

SEATS 16

Discussion style with additional lounge area
Includes: a 55in screen, wired and wireless connectivity, video conferencing capabilities

£90/hour (Soho Works member)
£160/hour (non-member)



BREWER

SEATS EIGHT

Discussion style
Includes: a 55in screen, wired and wireless connectivity, video conferencing capabilities

£90/hour (Soho Works member)
£160/hour (non-member)



CARNABY

SEATS EIGHT

Discussion style
Includes: a 55in screen, wired and wireless connectivity, video conferencing capabilities

£90/hour (Soho Works member)
£160/hour (non-member)



BERWICK

SEATS EIGHT

Discussion style
Includes: a 55in screen, wired and wireless connectivity, video conferencing capabilities

£90/hour (Soho Works member)
£160/hour (non-member)



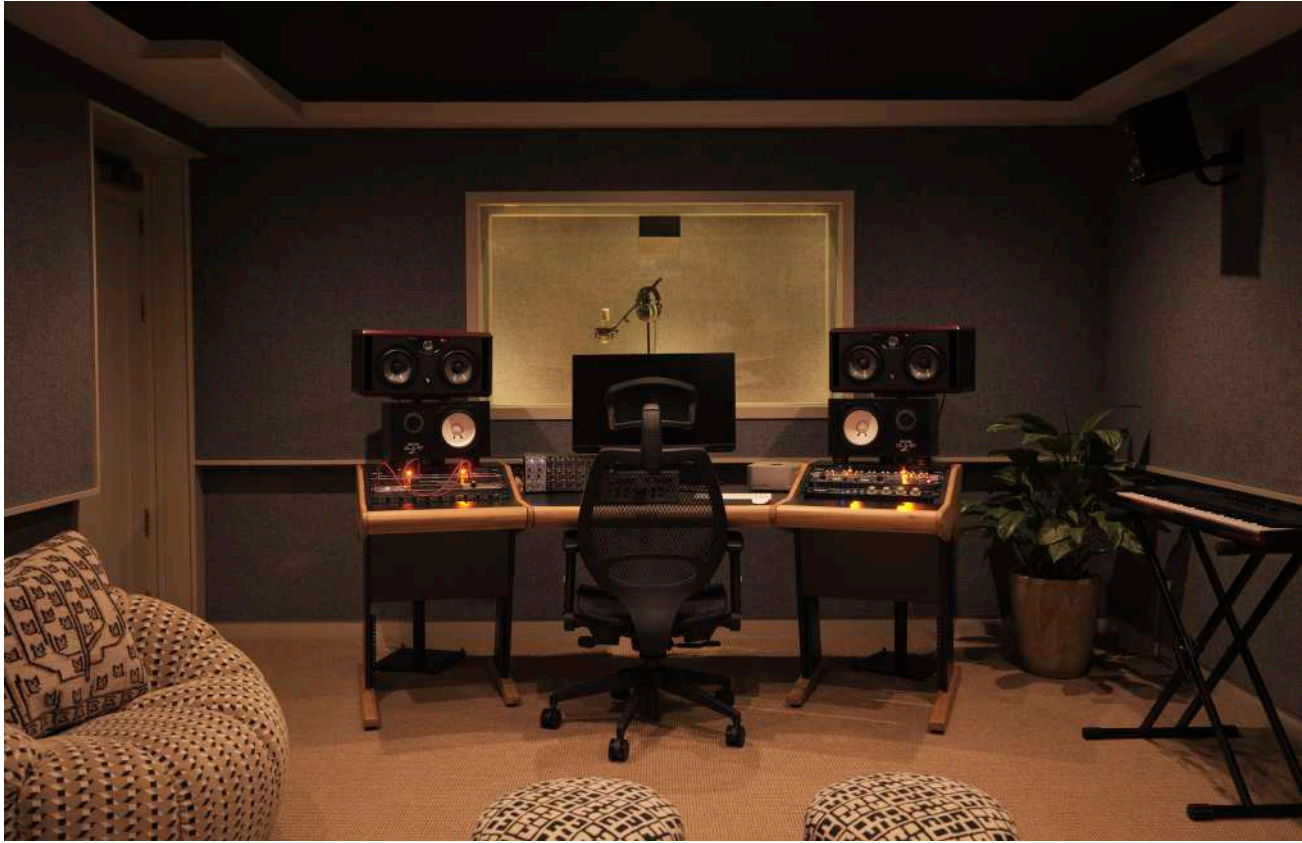
CANVAS ROOM

SEATS 50

A fully flexible private hire space, perfect for panel talks, castings, workshops, and studio sessions.

Theatre style
Bookable on a daily basis, this room features a large projector and has a maximum capacity of 50. We can also provide our bespoke catering menu, upon request.

Half day: £600 inc VAT
Full day: £1,200 inc VAT



RECORDING STUDIO

SEATS EIGHT

The first Soho House Studio is a state-of-the-art recording studio, complete with industry-standard equipment and amenities tailored to meet the needs of artists, writers and producers.

£110/hour (Soho Works member)
£160/hour (non-member)



PODCAST STUDIO

SEATS SIX

A specialist podcast studio equipped with industry-standard microphones and audio system, and mounted cameras to shoot 4k quality videos. Plus, illumination and mood lighting to suit the recording theme.

Boardroom style
Includes: 55in screen, presentation capabilities, wired and wireless connectivity, sound-resistant walls, podcast equipment

£100/hour (podcast-audio plug and play)
£300/hour (podcast with audio/visual engineer)



Lounge at Soho Works Dean Street

SOHO WORKS WHITE CITY, LONDON

Set next to White City House, in the historical Television Centre, our 30,000 sq ft workspace has multiple meeting rooms, podcast recording equipment, phone booths, and a fully equipped kitchen.



2 Television Centre, 101 Wood Lane, London W12 7FR

T: +44 (0) 20 8092 8000

E: reception.whitecity@sohoworks.com

Lounge at Soho Works White City



THE STUDY

SEATS SIX

Discussion style with additional lounge area
Includes: a 55in screen, wired and wireless connectivity, video conferencing capabilities

£55/hour (Soho Works member)
£90/hour (non-member)



LOFTUS ROOM

SEATS 14

Boardroom style with additional lounge area
Includes: a 55in screen, wired and wireless connectivity, video conferencing capabilities

£90/hour (Soho Works member)
£135/hour (non-member)



FIVE-A-SIDE

SEATS 14

Discussion style with additional lounge area
Includes: two discussion tables, a 55in screen, wired and wireless connectivity, video conferencing capabilities

£90/hour (Soho Works member)
£135/hour (non-member)



WEST ROOM

SEATS 14

Boardroom style with additional lounge area
Includes: a 55in screen, wired and wireless connectivity, video conferencing capabilities

£90/hour (Soho Works member)
£135/hour (non-member)



The Study at Soho Works White City

SOHO WORKS SHOREDITCH, LONDON

Located in the heart of east London in the iconic Tea Building, below Shoreditch House, the original Soho Works includes an open-plan lounge, a workshop, a photography studio, phone booths, meeting rooms, and private offices.

Unit 4.01, The Tea Building,
56 Shoreditch High Street, London E1 6JJ

T: +44 (0) 20 3841 7600
E: reception@sohoworks.com



Lounge at Soho Works Shoreditch



BRICK LANE 1

SEATS FOUR

Discussion style
Includes: a 55in screen, wired and wireless connectivity, video conferencing capabilities

£30/hour (Soho Works member)
£50/hour (non-member)



BRICK LANE 2

SEATS FOUR

Discussion style
Includes: a 55in screen, wired and wireless connectivity, video conferencing capabilities

£30/hour (Soho Works member)
£50/hour (non-member)



TEA ROOM

SEATS FOUR

Discussion style
Includes: a 55in screen, wired and wireless connectivity, video conferencing capabilities

£40/hour (Soho Works member)
£60/hour (non-member)



SPITALFIELD

SEATS 10

Boardroom style
Includes: a 55in screen, wired and wireless connectivity, video conferencing capabilities

£110/hour (Soho Works member)
£160/hour (non-member)



BISCUIT ROOM

SEATS 10

Boardroom style
Includes: a 55in screen, wired and wireless connectivity, video conferencing capabilities

£100/hour (Soho Works member)
£150/hour (non-member)



THE ARCHES

SEATS SIX

Discussion style
Includes: a 55in screen, wired and wireless connectivity, video conferencing capabilities

£60/hour (Soho Works member)
£90/hour (non-member)



COLUMBIA

SEATS FOUR

Discussion style
Includes: a 55in screen, wired and wireless connectivity, video conferencing capabilities

£55/hour (Soho Works member)
£90/hour (non-member)



EBOR

SEATS SIX

Discussion style
Includes: a 55in screen, wired and wireless connectivity, video conferencing capabilities

£55/hour (Soho Works member)
£90/hour (non-member)

PHOTOGRAPHY STUDIO



A white space studio providing a blank canvas for everything from photo shoots and filming to workshops and yoga classes. Lighting equipment available upon request.

£60/hour (Soho Works member)

£100/hour (non-member)



Lounge at Soho Works Shoreditch



SOHO **WORKS**

ABOUT US

Soho Works is a global network of workspaces by Soho House. Designed in the style of the Houses with the functionality of an office, the spaces are suited to individuals or teams from all industries. Enjoy added benefits on Soho House bedrooms and Soho Home.

sohohouse.com

