



# HOUSE ART



SOHO HOUSE HOLLOWAY

WEST HOLLYWOOD

**Introduction by Anakena Paddon,**  
Soho House Art Collections Manager

The Soho House Holloway art collection is focused on artists aged 40 or under who were born, trained or are based in LA. Their experience ranges from emerging voices (Dan Simantov and Dominique Labaki) to bastions of the city's art scene (Sayre Gomez and Genevieve Gaignard) and the wider art world as a whole (Aria Dean and Diedrick Brackens).

The House features a number of custom-made pieces, including a tapestry work created for the main club space by Diedrick Brackens, a participant of the Hammer Museum's renowned biennial showcase *Made in LA* in 2018. Fresh from the success of his *Halloween City* exhibition at François Ghebaly gallery, Sayre Gomez's contribution is a new painting that further explores that series, while Angeleno 'Renaissance men', brothers Kohshin and Delfin Finley, each produced a unique new work for the collection, which are exhibited side by side. Up on the rooftop, Jessalyn Brooks' commission is a mural of abstracted intertwining bodies in a palette that echoes both its immediate surroundings and that of the wider Californian landscape.

Across the House, the collection taps into the diversity of the Los Angeles art scene, with artists of all backgrounds producing works ranging from sculpture (Lisa Solberg and Sula Bermúdez-Silverman) to photography (Anna Carey); from works on paper (Julian Pace) and painting (Melinda Braathen) to textile-based pieces (Diedrick Brackens). The 34 bedrooms each feature a unique artwork by Dan Simantov, Dominique Labaki or Elizabeth Ibarra.

The collection was curated in 2022 by Chief Art Director Kate Bryan, and Art Collection Manager Anakena Paddon.





Artwork by Christina Quarles  
and Lisa Solberg in the Library



**Full list of Local Collection artists:**

Sula Bermúdez-Silverman  
Melinda Braathen  
Diedrick Brackens  
Jessalyn Brooks  
Anna Carey  
Petra Cortright  
Kenturah Davis  
Aria Dean  
Danielle Dean  
Kohshin Finley  
Genevieve Gaignard  
Anna Glantz  
Sayre Gomez  
Elizabeth Ibarra  
Greg Ito  
Dominique Labaki  
Jonny Negron  
Alexandra Noel  
Julian Pace  
Christina Quarles  
Dan Simantov  
Sissón  
Sable Elyse Smith  
Lisa Solberg  
Martine Syme  
Ken Taylor Reynaga  
Sarah Ann Weber  
Andrew Norman Wilson





Entrance

Artists

1. Martine Syms

2. Danielle Dean

1



2





Entrance

Artist

3-6. Kenturah Davis

3



4



5



6







## Lobby

### Artists

1. Sable Elyse Smith

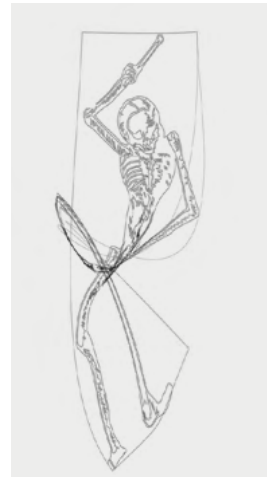
2 & 3. Aria Dean

4. Elizabeth Ibarra

1



2



3



4





Main club

Artists

1. Diedrick Brackens

2 & 3. Kohshin Finley

1



2



3





Main club

Artist

4. Genevieve Gaignard

4







Main club

Artists

1. Anna Glantz

2. Dan Simantov

3. Sarah Ann Weber

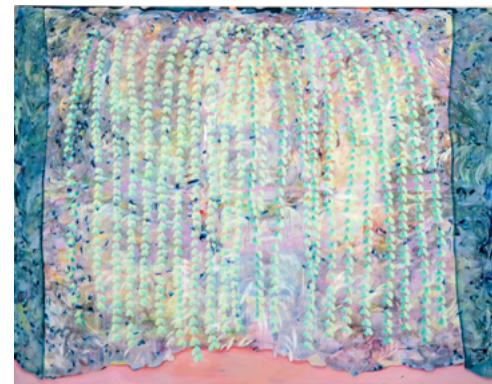
1



2



3





Dining room

Artist

1. Jasaya Neale

1





Dining room

Artist

2. Melinda Braathen

2





Dining room

Artist

3. Genevieve Gaignard

3







## Dining room

### Artists

1. Ken Taylor Reynaga
2. Petra Cortright

3. Greg Ito
4. Anna Carey

1



2



3



4





## Dining room

Artists

1. Sissón

2. Julian Pace

3. Sayre Gomez

1



2



3





## Library

### Artists

1-3. Sula  
Bermúdez-Silverman

4. Elizabeth Ibarra  
5. Jessalyn Brooks  
6. Julian Pace  
7. Jonny Negron

1



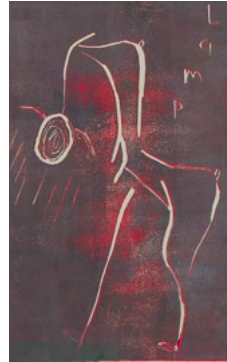
2



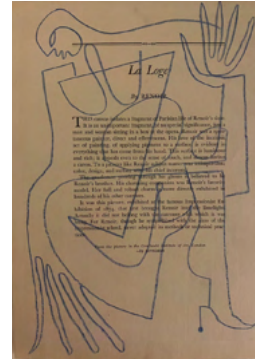
3



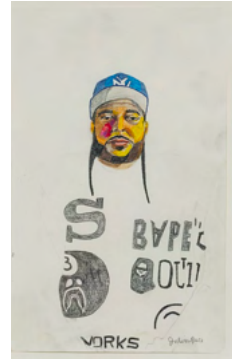
4



5



6



7





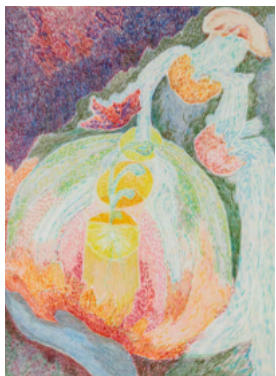
## Library

## Artists

1. Melinda Braathen
2. Julian Pace

- 3-5. Andrew Norman Wilson
6. Elizabeth Ibarra

1



2



3



4



5



6







## Library

### Artists

1. Dominique Labaki
2. Jonny Negron
3. Elizabeth Ibarra

4. Alexandra Noel
5. Lisa Solberg
6. Christina Quarles
7. Lisa Solberg

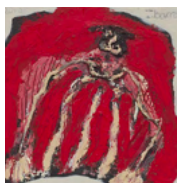
2



1



3



5



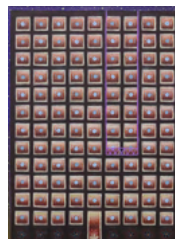
6



7



4





Rooftop

Artist

1. Jessalyn Brooks

1





### Bedrooms

Each room includes one or more works by these artists

### Artists

1. Dan Simantov
2. Elizabeth Ibarra

3. Dominique Labaki

1



2



3





Tapestry by Diedrick Brackens  
in the main club space







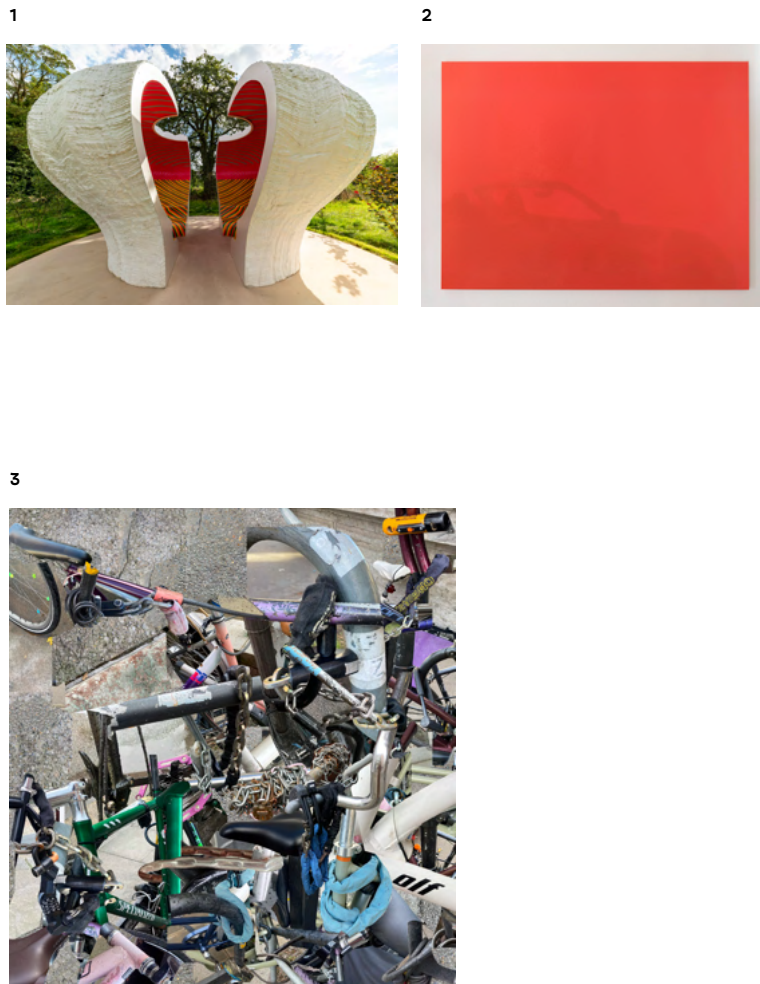
POWERED BY  
PORSCHE

# SOHO VISIONARIES

**'Working across painting, photography and sculpture, the three artists selected for Soho Visionaries may have distinct practices, but they all share a commitment to rethinking the world around us. At heart they are storytellers, and the works they have created as part of this initiative will be permanent reminders that art allows us to see beyond the expected.'**

The Soho Visionaries series, powered by Porsche, amplified the voices of three local artists and members who are driving culture forward. Together, Soho House and Porsche commissioned new site-specific works displayed at Soho Farmhouse, Soho House Barcelona and Soho House Berlin. The series is supported by events that celebrate Soho House's creative community, and allow members to participate in art workshops and talks around the world.

**Kate Bryan**  
Soho House Global Director of Art



**1. Soho Farmhouse**  
Yinka Ilori  
'Beacon of Dreams'

**2. Soho House Barcelona**  
Bernat Daviu  
'Visca la Vida! (Fidel)'

**3. Soho House Berlin**  
Nicole Wermers  
'Attachments (Digest)'



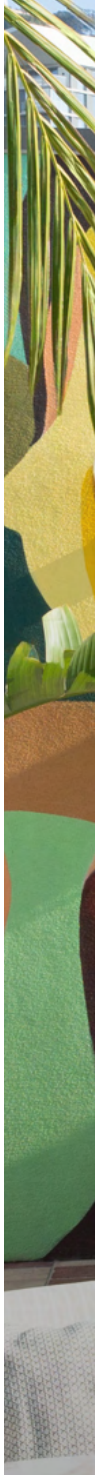


With special thanks to Porsche, who  
continue to support the art world  
globally and powered the production  
of these special art maps for members.



Explore the full Soho House Holloway  
art collection at [sohohouse.com](https://sohohouse.com)

**POWERED BY**  
**PORSCHE**



THE SOHO HOUSE  
**ART COLLECTION**