

# Soho House

Private Hire UK

[privateevents@sohohouse.com](mailto:privateevents@sohohouse.com)



# Event Spaces at Soho House

Whatever the event is that you have in mind, we have a range of spaces to suit, from creative workshops to intimate dinners, castings and country weddings. Some of our spaces are available for public hire, while others are for Soho House members only.

To make an enquiry, or to find out more information about any of our locations including floorplans and menus, please email [privateevents@sohohouse.com](mailto:privateevents@sohohouse.com)



Houses



# Soho Farmhouse

Our member's club in 100 acres of Oxfordshire countryside is home to a number of private hire spaces, including the Barwell Barn which is great for drinks and a feasting space for 80 people.

Great Tew, Chipping Norton, OX7 4JS





# The Farmhouse

Room	The Farmhouse
Dinner	22
Sleeps	14
Members only	Yes





# Soho Farmhouse Barwell Barn



Room Name	Barwell Barn
Seated	80
Standing	120
Members only	Yes



# Soho Farmhouse Glass House



Room	Glass House
Seated	60
Standing	80
Members only	Yes



# Soho Farmhouse Electric Barn

Room	Electric Barn
Seated	55
Standing	-
Members only	Yes





# 40 Greek Street

The original Soho House at 40 Greek Street is set in five Georgian townhouses at the heart of the UK's film and media industries in London's Soho. Recently refurbished, the four-floor space has the Circle Bar, Drawing Room, House Kitchen and two rooftop terraces. The Red Dining Room at 40 Greek Street hosts up to 12 guests seated and is available to hire by Soho House members only for private dinners.

40 Greek Street, London W1D 4EB





# 40 Greek Street



Room	The Club Room
Seated	30
Standing	40
Members only	Yes

Room	The Red Room
Seated	12
Standing	-
Members only	Yes





# 76 Dean Street

Occupying a restored Georgian townhouse, our second Soho club opened 20 years after 40 Greek Street, our first House, and includes seven bars, three club rooms, a House Kitchen, outdoor courtyard, terrace and screening room.

The Top Floor and Library Bar area at 76 Dean Street holds 30 people seated and 80 standing. The Small Sitting Room holds 14 seated. Both of these spaces are available for hire to Soho House members only. The Top Floor and Small Sitting Room are available for evening events only.

The 43-seat basement cinema which includes exclusive use of the cinema bar and lounge which holds 60 standing, is available for hire to both members and the public.

76 Dean Street, London W1D 3SZ





# 76 Dean Street

Room	Top Floor & Library bar
Seated	30
Standing	80
Members only	Yes



Room	Sitting Room
Seated	14
Standing	-
Members only	Yes



Room	Screening Room
Seated	43
Standing	-
Members only	No





# High Road House

Situated in west London, not far from the river and only a 20 minute drive from Heathrow, our Chiswick club opened in 2006 and features a House Kitchen, bar, lounge, flexible event spaces, a public brasserie and 14 bedrooms.

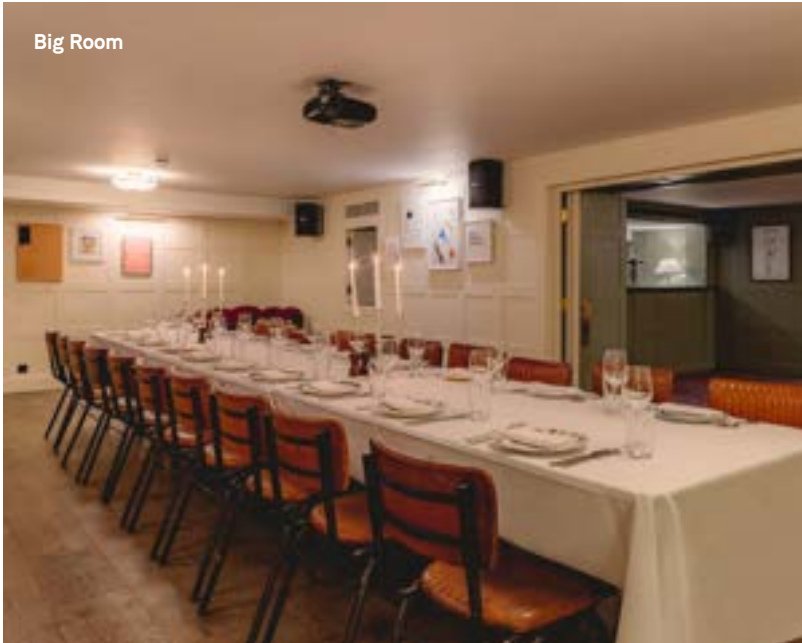
Downstairs at High Road House, event and private dining areas can be created in a variety of setups for groups ranging from 10 to 120 and are available to members and non-members. On the first floor, within the Club, our Side Room can hold up to 12 people seated. This is for member bookings only.

162-170 Chiswick Road, London W4 1PR





# High Road House



Room	Big Room	Little Room	Big & Little Room
Seated	50	20	70
Standing	60	40	120
Members only	No	No	No

Room	Side room	Club room 3
Seated	16	30
Standing	18	50
Members only	Yes	Yes





# Little House Mayfair

Located on a quiet corner in London's Mayfair, Soho House's little sister is a cosy place to meet, eat and drink. For those staying in London for extended periods, there are also four long-stay apartments above the main House.

Little House is available to hire in its entirety every Sunday evening from 6pm. The ground floor space can hold up to 60 seated or 150 standing. Available to Soho House members and non-members.

Our main restaurant at Little House Mayfair can host up to 60 for a late lunch, we do require a hosting House member for these bookings.

2 Queen Street, London W1J 5PA





# Little House Mayfair

Room	Restaurant available for late lunch
Seated	60
Members only	Yes
Room	Entire House available on Sunday evenings (6pm onwards)
	Weekdays: Group dining only
Seated	60
Standing	150
Members only	No





# White City House

Our third House in west London occupies part of the former BBC Television Centre in White City and, in addition to a rooftop pool and terrace, offers three floors of club space, a 22,000sq ft gym, 45 bedrooms and our new Studio space.

On our 8th Floor we have The Welcome Bar which can seat 24 and hold 60 standing – this area is available to hire by Soho House members only.

Inspired by the design of Soho House Chicago, White City House Studio can host 110 people seated and up to 200 people standing. It divides into two smaller studios called Studio A and Studio B for smaller parties.

Television Centre, 101 Wood Lane,  
London W12 7FR





# Pen Yen

Pen Yen's ultimate speciality is the robata grill (cooking over hot charcoal on a wide, flat open fireplace) with Japanese binchotan charcoal, which holds heat longer for a delicate charred flavour. From sticky pork ribs and wood-oven chicken with spicy den miso to grilled wild seabass, you'll have a hard time choosing between the options.

The interior combines Soho Home signatures with Asian influences making it a great place for an indulgent dinner or a big celebration. The stage offers a place for performances as well as a sunken area in front which can turn into the perfect dance floor.

Seated	100
Standing	200
Members only	Yes (on certain dates only)





# White City House

Room	Studio
Seated	100
Standing	200
Members only	No

Room	Studio A
Seated	60
Standing	120

Room	Studio B
Seated	24
Standing	40

---

Room	Welcome Bar
Seated	24
Standing	60
Members only	Yes

Room	Bend
Standing	12-14
Members only	Yes





# Electric House

Next door to one of the oldest cinemas in London, Electric House on Notting Hill's Portobello Road offers spaces to eat, drink, work and relax. Upstairs at Electric House, The Library hosts up to 22 seated or 45 standing for private events and dinners. The Snug, just off the main club floor holds 14 people seated. Both available for hire to Soho House members only.

191 Portobello Road, London W11 2ED





# Electric House



Room	The Library
Seated	22
Standing	45
Members only	Yes
Room	The Snug
Seated	14
Standing	14
Members only	Yes



# Babington House

A home away from home, Babington House sits in 18 acres of grounds 30 minutes from Bath, Somerset. The original Cowshed spa, 33 bedrooms, two pools, a gym, tennis courts and a croquet lawn are among the features of this Georgian manor house.

Spaces to hire at Babington range from the Log Room seating up to 36 guests, the Library seating 25, with outdoor settings available in the warmer months. For a more intimate dinner, the Snug can hold eight or the Study seats up to 8. The Orangery can host up to 90 seated for wedding breakfasts and exclusive hires. Also on offer is the 45 seat cinema for hire to Soho House members.

Babington, near Frome, Somerset, BA11 3RW





# Babington House

Room	Walled Garden	
Seated	36	
Standing	50	
Members only	Yes	
Room	Croquet Lawn	Library
Seated	36	22
Standing	45	30
Members only	Yes	Yes
Room	Study	Log Room
Seated	8	36
Standing	N/A	N/A
Members only	Yes	Yes
Room	Screening Room	The Snug
Seated	45	10
Standing	N/A	10
Members only	Yes	Yes









# White City Works

Room	Library
Seated	10
Standing	25
Members only	No

Room	East Room
Seated	10
Standing	30
Members only	Yes

Room	Drawing Room
Seated	10
Standing	30
Members only	Yes





# White City Works

Room	Loft
Seated	50
Standing	150
Members only	No
Room	Lounge & Kitchen
Seated	20
Standing	65
Members only	No





# Shoreditch Works

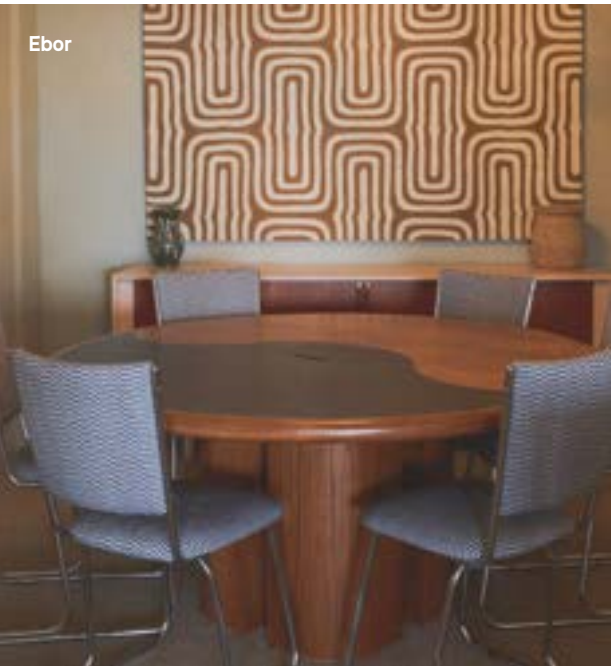
Room Lounge  
Standing 180



Room Kitchen  
Seated 10  
Standing 40



Room Ebor  
Seated 5  
Standing 5

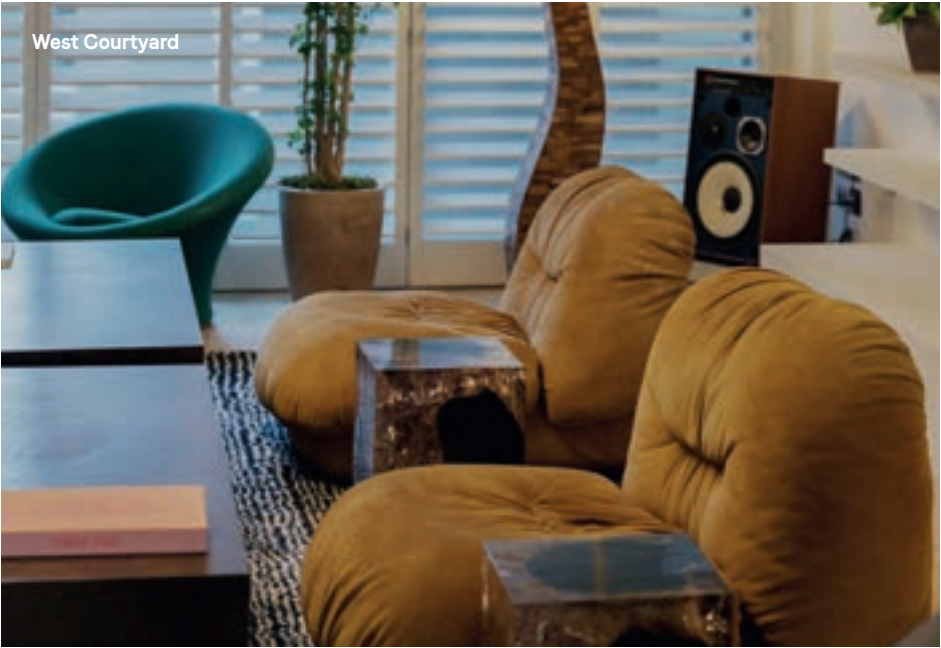


Room Booths  
Seated 10  
Standing 15



# 180 Lofts

Room	Dining Room	Kings
Seated	8	16
Standing	20	20

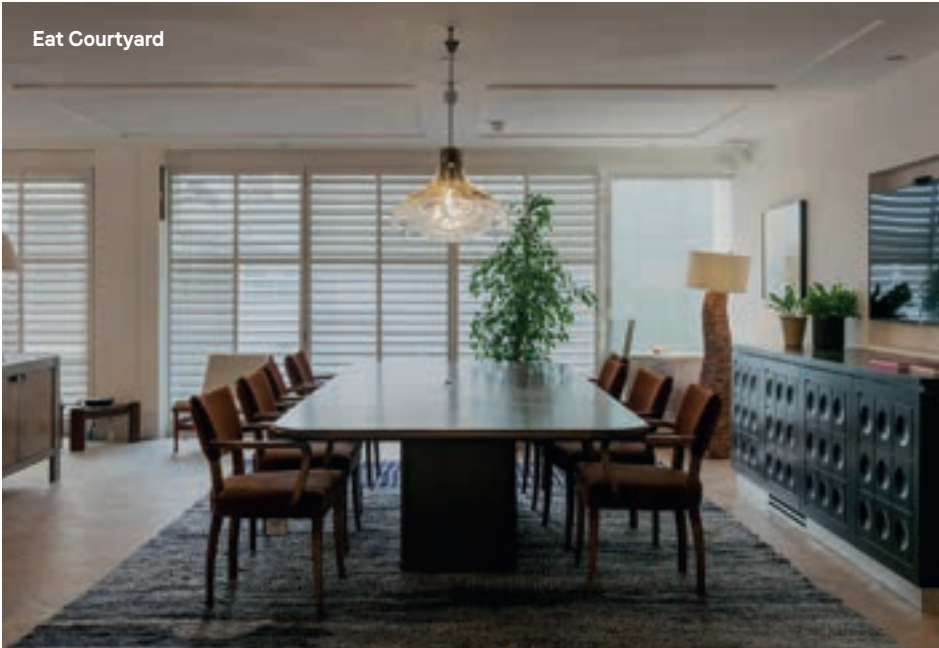


Room	Arundel 1	Arundel 2
Seated	10	10
Standing	10	10



Room	St Clements	Sitting Room
Seated	10	10
Standing	35	15

Room	Living Room	Kitchen
Seated	10	15
Standing	20	30



Available to members and non-members



# 180 Lofts

Room	Mackennal	
Seated	8	
Standing	10	
Room	East Courtyard	West Courtyard
Seated	25	25
Standing	60	60
Room	East Apartment	West Apartment
Seated	14	20
Standing	40	40

Available to members and non-members





# Royalty House, Dean Street

Room	Open Lounge	Mews 1
Seated	22	9
Standing	60	20

Room	Shaftesbury	Mews 2
Seated	10	6
Standing	25	10

Room	Canvas Room	Studio
Seated	-	8
Standing	60	10

Room	Old Compton
Seated	6
Standing	25

All rooms members only





Cinemas and Screening Rooms



# Electric Cinemas

The Electric Portobello is a unique space which lends itself to a range of opportunities for private hire for a maximum of 83 people. It's ideal for press launches, birthdays, screenings, presentations or conferences.

The Electric White City comprises three different screens. Screen 1 seats 51, Screen 2 seats 37, and Screen 3 seats 32.

All cinemas are available to hire by Soho House members and non-members.

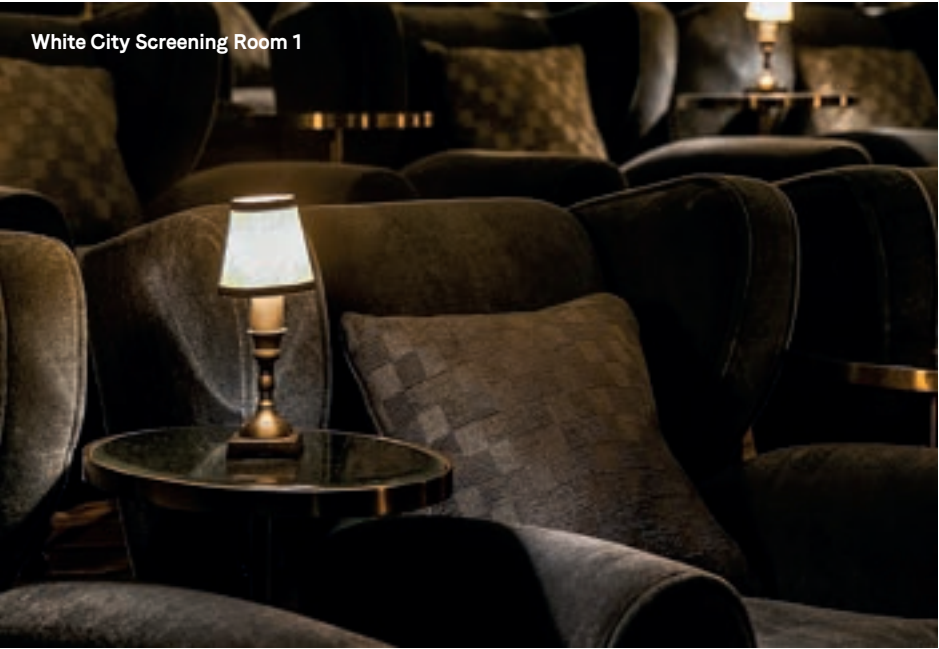
Portobello, 191 Portobello Road, W11 2ED

White City, Television Centre, 101 Wood Lane, London W12 7FR





# Electric Cinemas



Screening Room	Seated
Portobello	83
White City 1	46
White City 2	35
White City 3	31



# Screening Rooms

Room	Seated
Redchurch Street	45
76 Dean Street	43





Townhouses



# Dean Street Townhouse

A pair of Georgian residences built by carpenter John Meard in 1732-1735. The Snug at Dean Street Townhouse is a private dining area for up to 14 people, separated from the main restaurant by thick velvet curtains. Available for hire to Soho House members and non-members.

69-71 Dean Street, London W1D 3SE





# Dean Street Townhouse

Room	The Snug
Seated	14
Standing	-
Members only	No





# Kettner's

The design of Kettner's retains the original Grade II listed details, including floral plasterwork and mirrors that line the walls. Rosewood and mahogany furniture throughout add warmth.

The Champagne Bar features an original mosaic tiled floor and early-deco 1920s interior details.

29 Romilly Street, London W1D 5HP





# Kettner's



Room	Champagne Bar
Seated	-
Standing	50
Members only	No



Restaurants



# Restaurants

Our restaurants have a number of options for private hire and tables for large groups, whether you're celebrating a birthday, having a team dinner or organising a party. Feast on dishes from around the globe, including classic Italian plates at Cecconi's and traditional French cooking at Cafe Boheme .

Cecconi's Mayfair  
5A Burlington Gardens, W1S 3EP. [cecconis.co.uk](http://cecconis.co.uk)

Cecconi's Shoreditch  
58-60 Redchurch Street, E2 7DP. [cecconishoreditch.com](http://cecconishoreditch.com)

Cecconi's Pizza Bar  
19-21 Old Compton Street, W1D 5JJ . [cecconispizzabar.com](http://cecconispizzabar.com)

Cafe Boheme  
13 Old Compton Street, W1D 5JQ. [cafeboheme.co.uk](http://cafeboheme.co.uk)

High Road Brasserie  
162-170 Chiswick High Road, W4 1PR. [highroadbrasserie.co.uk](http://highroadbrasserie.co.uk)

Electric Diner  
191 Portobello Road, W11 2ED. [electricdiner.com](http://electricdiner.com)

Room Name	Table Size
Cecconi's Mayfair	12
Cecconi's Shoreditch	15
Cecconi's Pizza Bar	16
Cafe Boheme	10
High Road Brasserie	16
Electric Diner	10







About us

We have Soho Houses all over the world,  
from Miami and Mumbai to Berlin and Barcelona,  
plus a number of public restaurants, townhouses,  
motels, cinemas, retail offerings, and workspaces.

[sohohouse.com](http://sohohouse.com)