

MEETING ROOMS



SOHOWORKS

Meeting Rooms at Soho Works

Soho Works is an international network of workspaces by Soho House, designed and equipped to help creative thinkers and businesses connect, collaborate, and grow.

Our spaces combine the 'home away from home' feeling of our Houses with all the tools, technology and equipment to help you do your best work.

Each workspace offers meeting rooms, flexible private hire options and a curated programme of member events to help you and your business grow.

Open now in **180 Strand, Dean Street, White City** and **Shoreditch**

Prices are exclusive of VAT, excluding 180 Strand.
Non-member rates include House and Friends-only memberships.



180 Strand

180 Soho Works is based inside a Brutalist building on London's Strand, which is also home to The Store X, Dazed Media Group, IGM and The Vinyl Factory. Our 20,000 sq ft workspace is set across two floors and has a private loft space, meeting rooms, podcast recording studio, phone booths, and a fully equipped kitchen.

180 Strand, London, WC2R 1EA

For enquiries, contact reception.180@sohoworks.com



180 STRAND



KINGS

Boardroom style
Large screen
Wired and wireless connectivity
Video conferencing
Podcast equipment
Sound-resistant walls

Seats sixteen

£175 per hour inc VAT



180 STRAND



ST CLEMENTS

Lounge style
Large screen
Wireless connectivity

Seats ten

£150 per hour inc VAT



180 STRAND



SITTING ROOM

Lounge style
Large screen
Wireless connectivity

Seats eight

£110 per hour inc VAT

180 STRAND

MACKENNAL

Boardroom style
55 inch screen
Wired and wireless connectivity
Video conferencing capabilities

Seats ten

£110 per hour inc VAT



180 STRAND



WEST APARTMENT

Boardroom style
Large screen
Wired and wireless connectivity
Video conferencing
Wine fridge and sink

Seats twenty five

£175 per hour inc VAT



180 STRAND

LIVING ROOM

Discussion style
For bigger gatherings, combine this
room with the West Apartment.
Screen available upon request

Seats eight

£50 per hour inc VAT



180 STRAND

DINING ROOM

Discussion style
For bigger gatherings, combine this
room with the East Apartment 1.
Screen available upon request

Seats eight

£50 per hour inc VAT



180 STRAND



EAST APARTMENT 1

Boardroom style
Large screen
Wired and wireless connectivity
Video conferencing
Wine fridge and sink

Seats twelve

£110 per hour inc VAT



180 STRAND



EAST APARTMENT 2

Boardroom style
Large screen
Wired and wireless connectivity
Video conferencing
Wine fridge and sink

Seats twelve

£110 per hour inc VAT



180 STRAND



East Courtyard

This flexible event space is ideal for hosting presentations or panel talks with a capacity of up to 60 people. It can also be cleared of furniture – ideal for brand launches and press days, as well as drinks receptions.

For enquiries, contact
privateevents.180@sohoworks.com

Dean Street

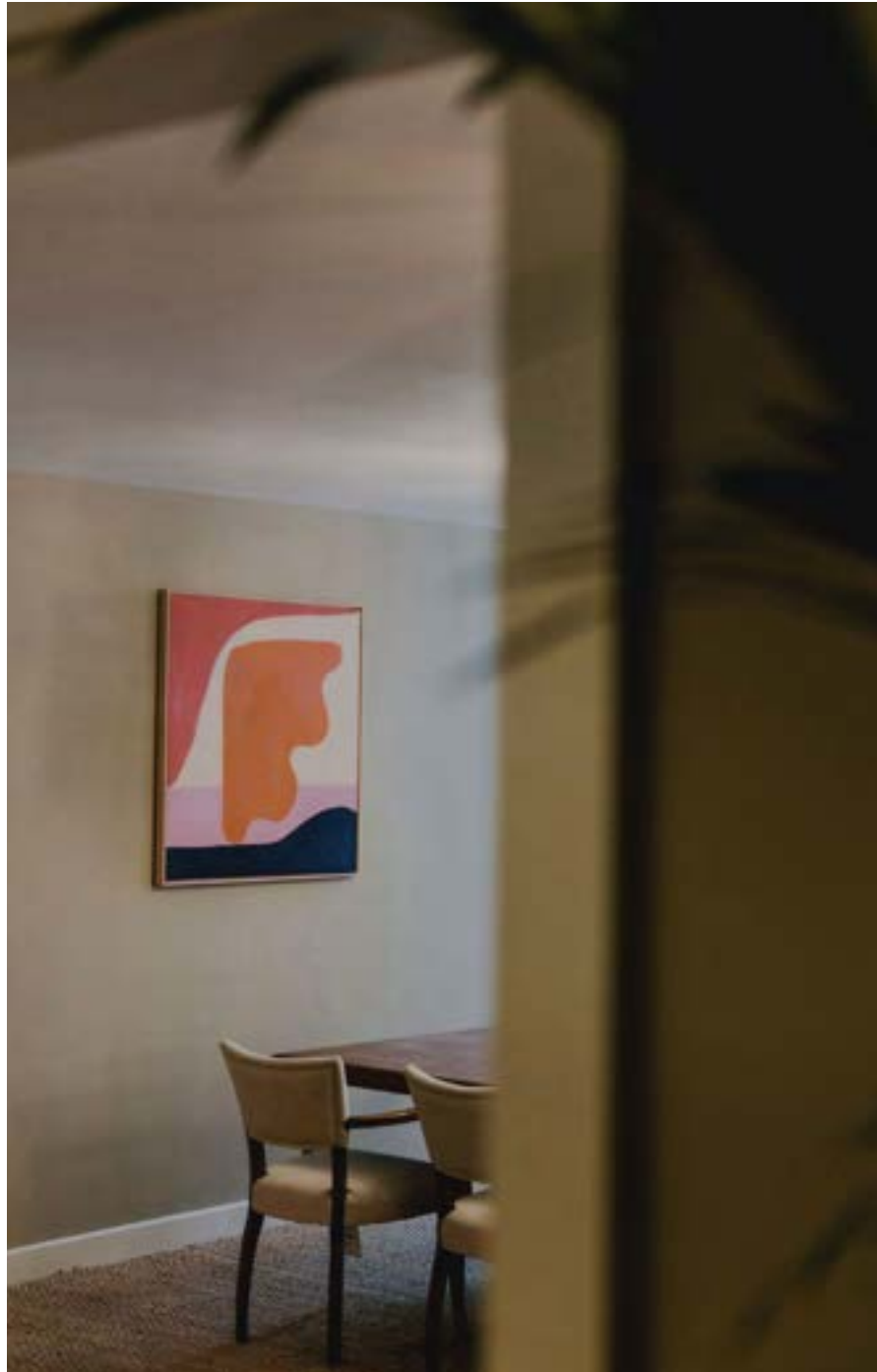
Located in the heart of Soho and two doors down from 76 Dean Street, our 24,000 sq ft workspace is set across four floors. Dean Street boasts meeting rooms, members' kitchens, a podcast room, showers, bike storage and two courtyards.

72-74 Dean Street, London, W1D 3SG

For enquiries, contact reception.deanst@sohoworks.com



DEAN STREET



SHAFTESBURY

Boardroom style
55 inch screen
Wired and wireless connectivity
Temperature controlled
Can be booked with Mews 1

Seats up to twelve

£90 per hour (Soho Works member)
£160 per hour (non-member)



DEAN STREET



MEWS 1

Lounge style
Temperature controlled
Can be booked with Shaftesbury

This room does not include a screen or video
conferencing capabilities

Seats six

£55 per hour (Soho Works member)
£115 per hour (non-member)



DEAN STREET



MEWS 2

Lounge style
55 inch screen
Wired and wireless connectivity
Video conferencing capabilities
Temperature controlled

Seats eight

£55 per hour (Soho Works member)
£155 per hour (non-member)



DEAN STREET



OLD COMPTON

Discussion style
Additional lounge area
55 inch screen
Wired and wireless connectivity
Video conferencing capabilities
Temperature controlled

Seats up to fourteen

£90 per hour (Soho Works member)
£160 per hour (non-member)



DEAN STREET

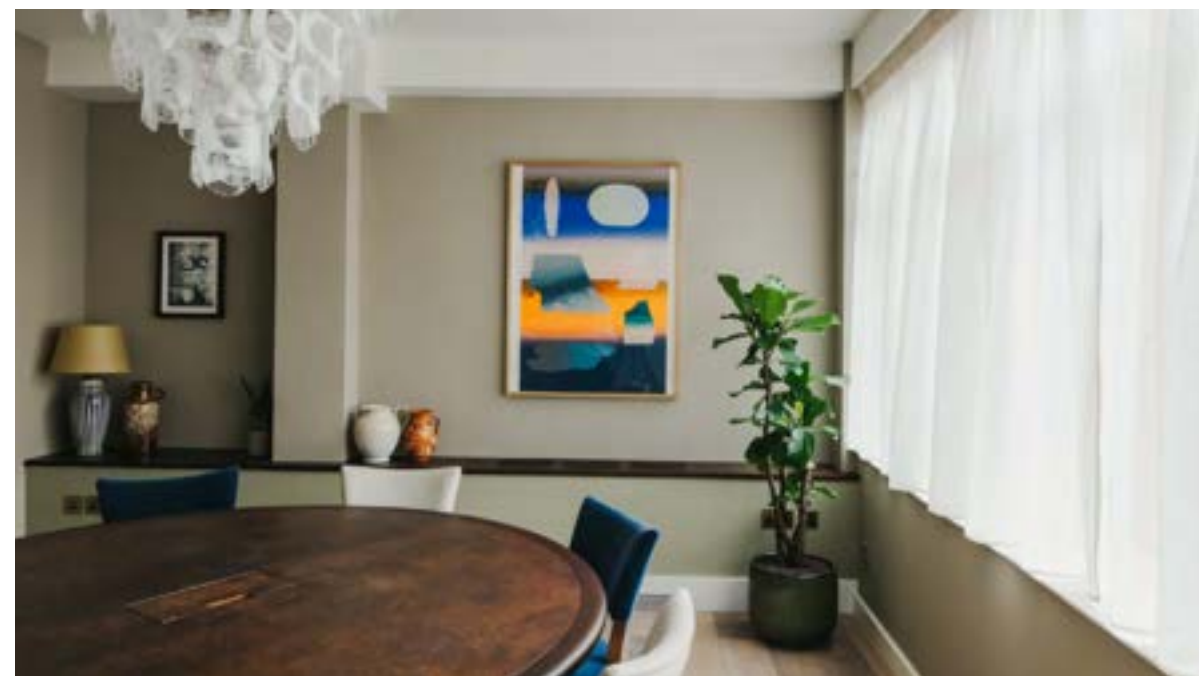


PRIDE

Discussion style
55 inch screen
Wired and wireless connectivity
Video conferencing capabilities
Temperature controlled

Seats eight

£55 per hour (Soho Works member)
£115 per hour (non-member)



DEAN STREET



SOUTH ROOM

Discussion style
Additional lounge area
55 inch screen
Wired and wireless connectivity
Video conferencing capabilities
Temperature controlled

Seats up to sixteen

£90 per hour (Soho Works member)
£160 per hour (non-member)



DEAN STREET



BREWER

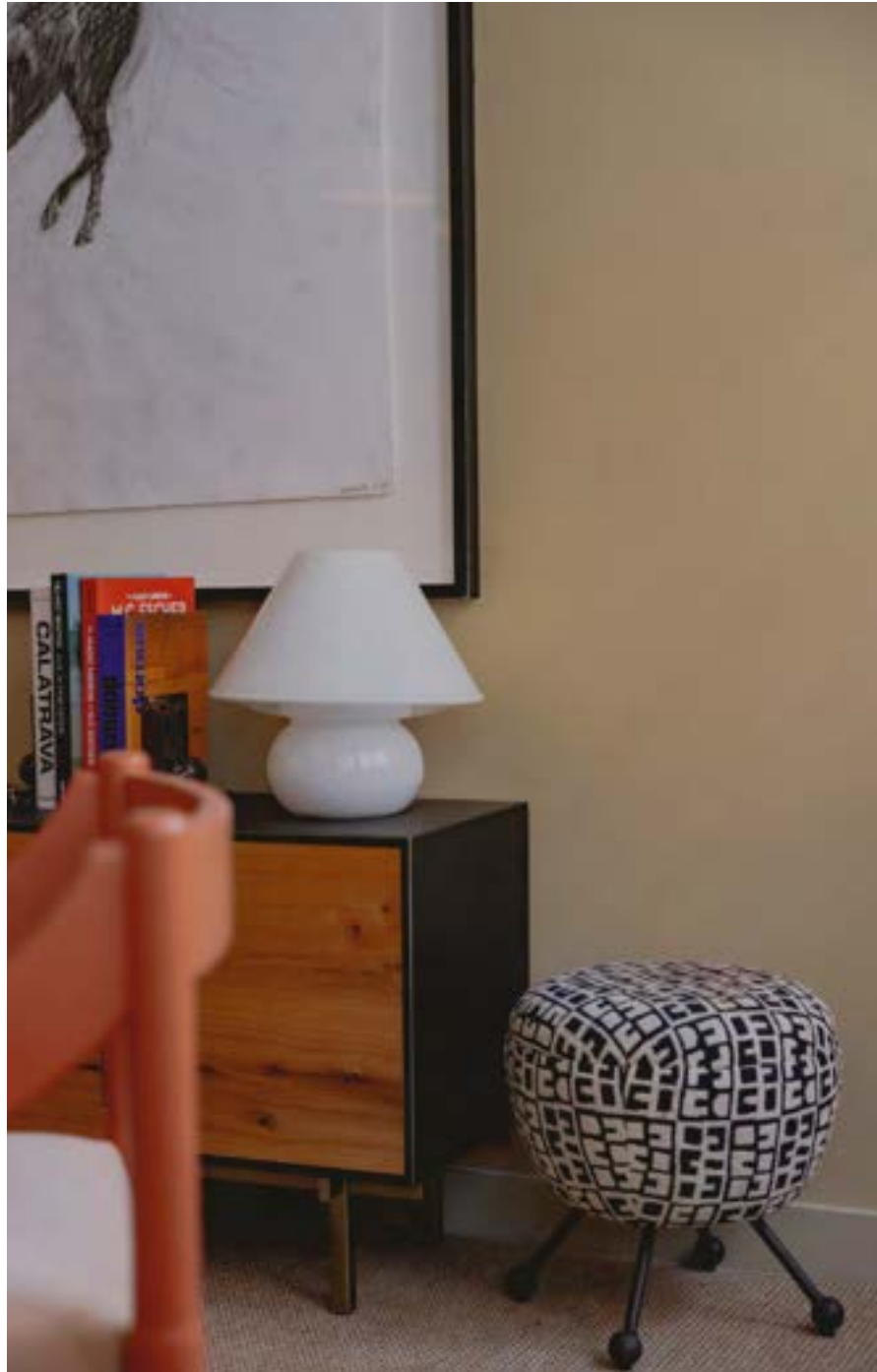
Discussion style
55 inch screen
Wired and wireless connectivity
Video conferencing capabilities
Temperature controlled

Seats up to eight

£90 per hour (Soho Works member)
£160 per hour (non-member)



DEAN STREET



CARNABY

Discussion style
55 inch screen
Wired and wireless connectivity
Video conferencing capabilities
Temperature controlled

Seats up to eight

£90 per hour (Soho Works member)
£160 per hour (non-member)



DEAN STREET



BERWICK

Discussion style
55 inch screen
Wired and wireless connectivity
Video conferencing capabilities
Temperature controlled

Seats up to eight

£90 per hour (Soho Works member)
£160 per hour (non-member)



DEAN STREET



RECORDING STUDIO

The first Soho House Studio is a state-of-the-art recording studio, complete with industry-standard equipment and amenities tailored to meet the needs of artists, writers and producers.

Contact recording.studio@sohohouse.com to enquire

DEAN STREET

PRESENTATION AND PODCAST STUDIO

Boardroom style
55 inch screen
Presentation capabilities
Wired and wireless connectivity
Temperature controlled
Sound-resistant walls
Podcast equipment

Seats eight

£90 per hour (Soho Works member)
£160 per hour (non-member)



DEAN STREET

CANVAS ROOM

A fully flexible, private hire space, perfect for panel talks, castings, workshops and studio sessions.

Bookable on a daily basis, our temperature controlled room features a large projector and has a maximum capacity of 50. We can also provide our bespoke catering menu, upon request.

Contact privateevents.180@sohoworks.com to enquire



White City

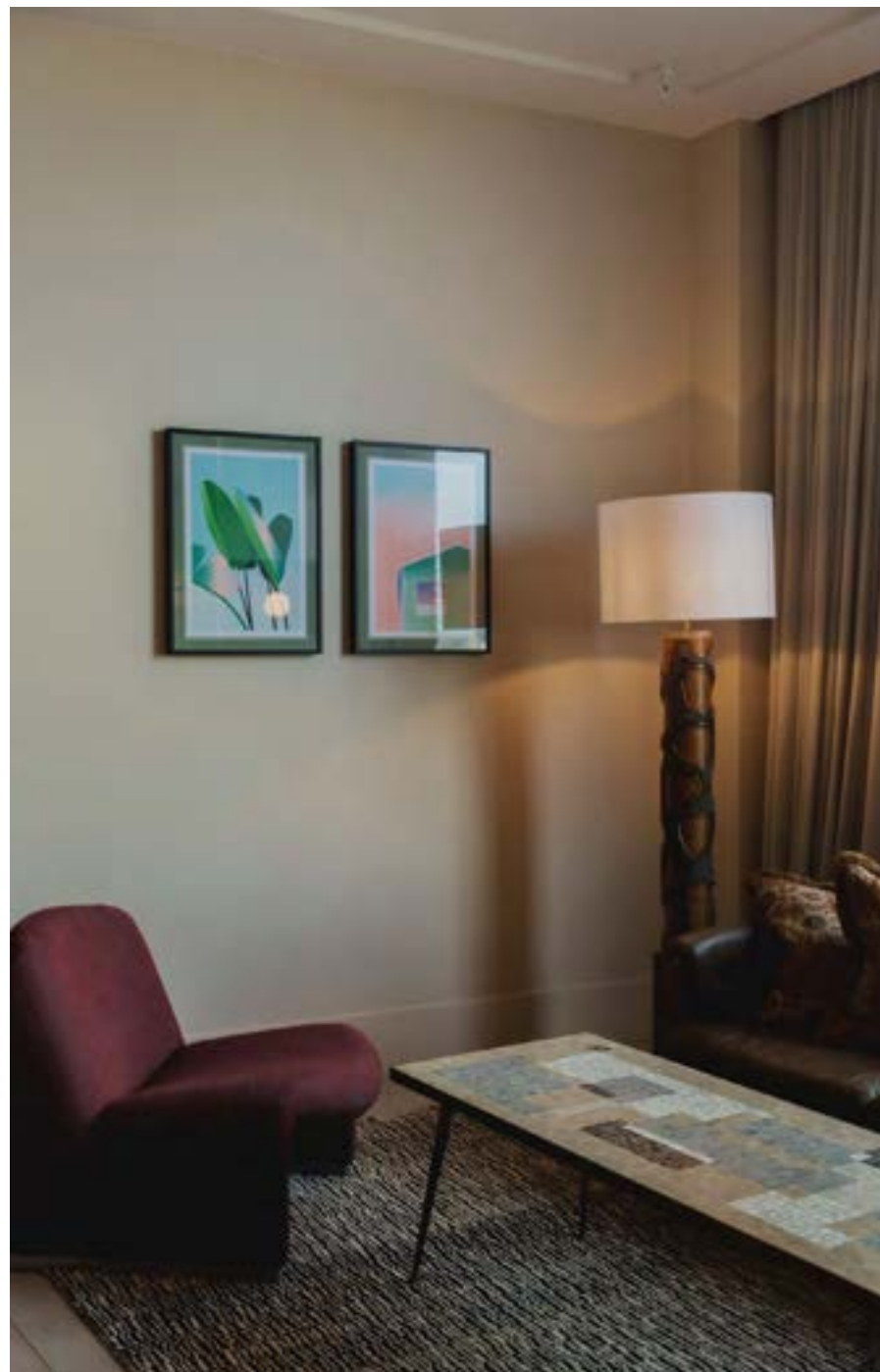
Set next to White City House, in the historical Television Centre, our 30,000 sq ft workspace has multiple meeting rooms, podcast recording equipment, phone booths, and a fully equipped kitchen.

2 Television Centre, London, W12 7FR

For enquiries, contact reception.whitecity@sohoworks.com



WHITE CITY



THE STUDY

Discussion style
Additional lounge area
55 inch screen
Wired and wireless connectivity
Video conferencing capabilities

Seats six

£55 per hour (Soho Works member)
£90 per hour (non-member)



WHITE CITY

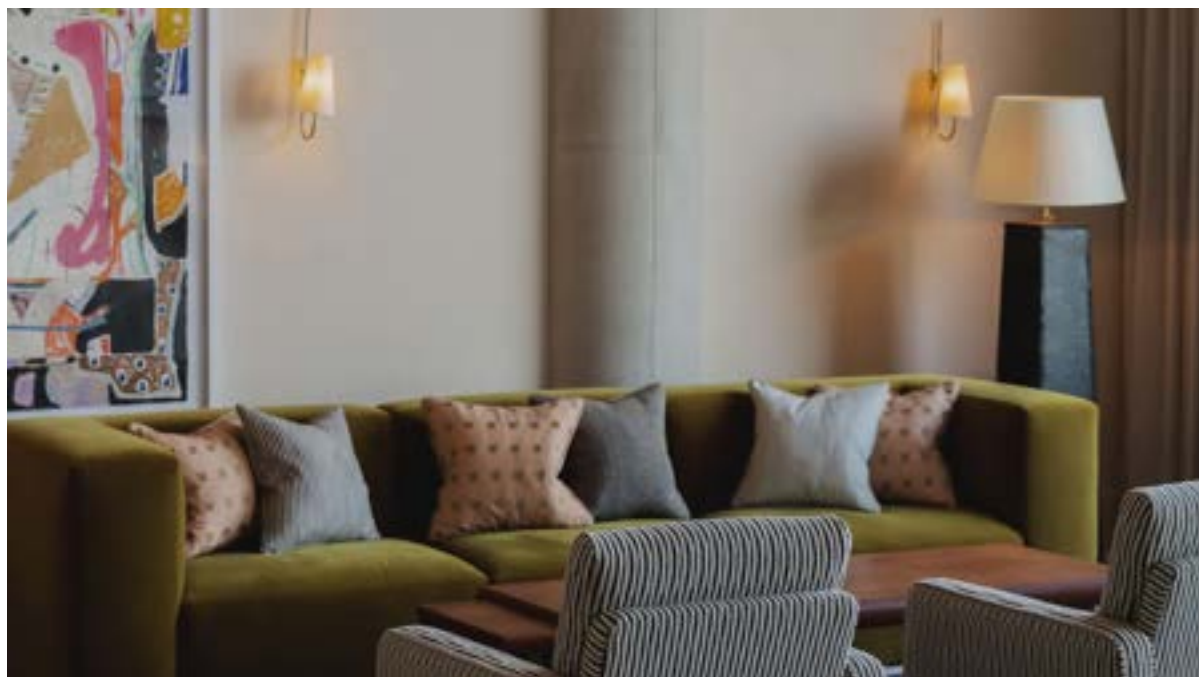


LOFTUS ROOM

Boardroom style
Additional lounge area
55 inch screen
Wired and wireless connectivity
Video conferencing capabilities

Seats up to fourteen

£90 per hour (Soho Works member)
£135 per hour (non-member)



WHITE CITY

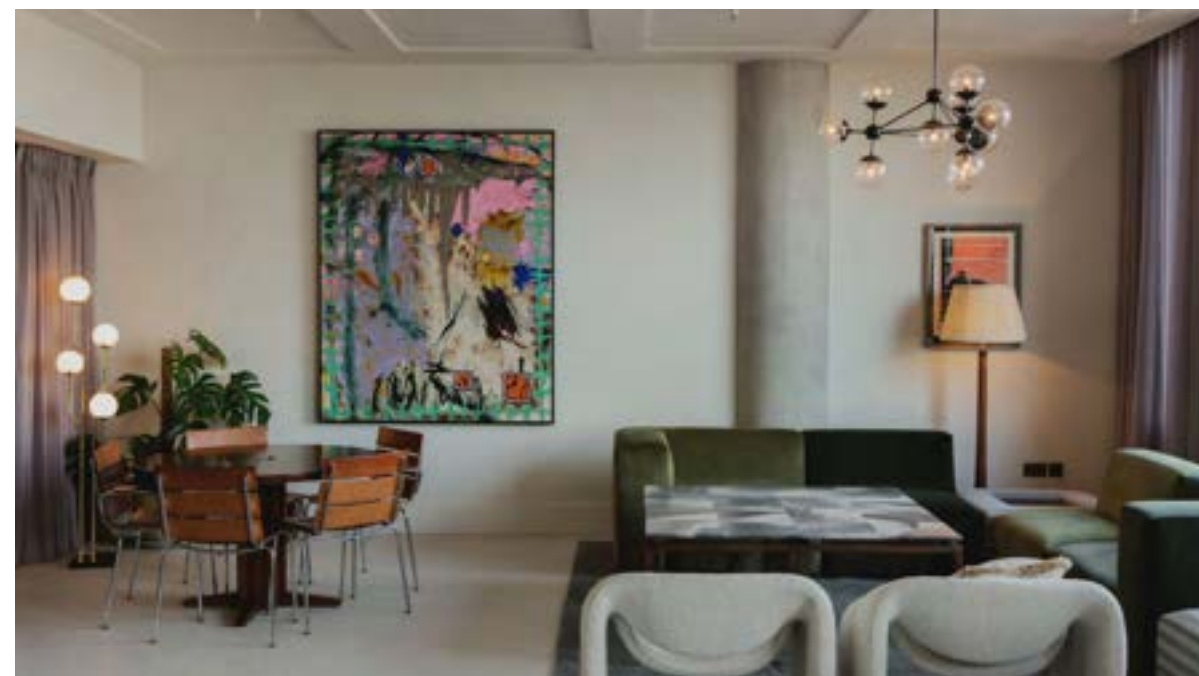


FIVE-A-SIDE

Discussion style
Additional lounge area
Two discussion tables
55 inch screen
Wired and wireless connectivity
Video conferencing capabilities

Seats up to fourteen

£90 per hour (Soho Works member)
£135 per hour (non-member)



WHITE CITY



WEST ROOM

Boardroom style
Additional lounge area
55 inch screen
Wired and wireless connectivity
Video conferencing capabilities

Seats up to twelve

£90 per hour (Soho Works member)
£135 per hour (non-member)

SHOREDITCH

Located in the heart of east London in the iconic Tea Building, below Shoreditch House, the original Soho Works includes an open-plan lounge, workshop, studio, phone booths, meeting rooms, and offices.

56 Shoreditch High Street, London, E1 6JJ

For enquiries, contact reception@sohoworks.com



SHOREDITCH



BRICK LANE 1

Discussion style
55 inch screen
Wired and wireless connectivity
Video conferencing capabilities
Temperature controlled

Seats four

£30 per hour (Soho Works member)
£50 per hour (non-member)

SHOREDITCH



BRICK LANE 2

Discussion style
55 inch screen
Wired and wireless connectivity
Video conferencing capabilities
Temperature controlled

Seats four

£30 per hour (Soho Works member)
£50 per hour (non-member)

SHOREDITCH



TEA ROOM

Discussion style
55 inch screen
Wired and wireless connectivity
Video conferencing capabilities
Temperature controlled

Seats four

£40 per hour (Soho Works member)
£60 per hour (non-member)

SHOREDITCH



SPITALFIELD

Boardroom style
55 inch screen
Wired and wireless connectivity
Video conferencing capabilities

Seats ten

£110 per hour (Soho Works member)
£160 per hour (non-member)

SHOREDITCH



BISCUIT ROOM

Boardroom style
55 inch screen
Wired and wireless connectivity
Video conferencing capabilities
Temperature controlled

Seats ten

£100 per hour (Soho Works member)
£150 per hour (non-member)

SHOREDITCH



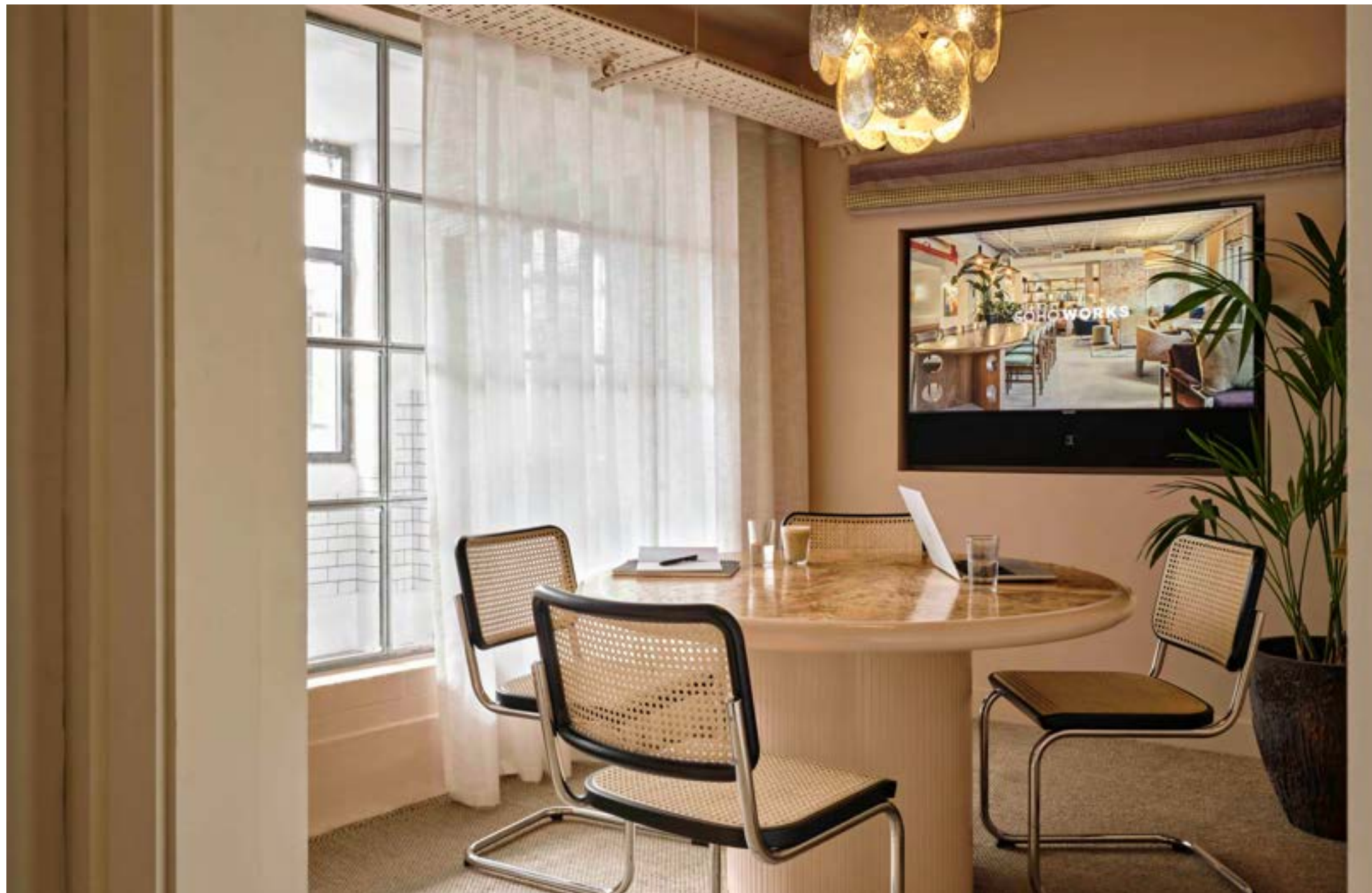
THE ARCHES

Discussion style
55 inch screen
Wired and wireless connectivity
Video conferencing capabilities

Seats six

£60 per hour (Soho Works member)
£90 per hour (non-member)

SHOREDITCH



COLUMBIA

Discussion style
55 inch screen
Wired and wireless connectivity
Video conferencing capabilities

Seats four

£55 per hour (Soho Works member)
£90 per hour (non-member)

SHOREDITCH



EBOR

Discussion style
55 inch screen
Wired and wireless connectivity
Video conferencing capabilities

Seats six

£55 per hour (Soho Works member)
£90 per hour (non-member)

SHOREDITCH

PHOTOGRAPHY STUDIO

A white space studio providing a blank canvas for everything from photo shoots and filming to workshops and yoga classes. Lighting equipment available upon request.

£60 per hour (Soho Works member)
£100 per hour (non-member)



